

# **Campus Accessibility for Persons with Disabilities**

**2024-25**



**Shoolini University of Biotechnology and Management Sciences,  
Bajhol, Solan, Himachal Pradesh-173229**

## **Campus Accessibility for People with Disabilities**

Shoolini University is committed to providing a **fully accessible, inclusive, and barrier-free campus** environment for people with disabilities. The university has established a comprehensive policy framework ensuring equality, dignity, and non-discrimination across all academic and administrative processes, from admission to placement.

The campus is equipped with **accessible infrastructure, including ramps, railings, lifts, and specially designed washrooms** in academic and residential blocks. Mobility is further supported through centralized **transport facilities such as e-carts, ensuring ease of movement across the campus.**

Additional support systems include **priority accommodation, financial assistance for assistive devices (such as hearing aids and mobility equipment), and access to specialized learning tools** for visually challenged students. The university also provides **technical support, healthcare services, sports facilities, and a 24×7 helpline**, ensuring holistic well-being.

Through these integrated measures, Shoolini University ensures that individuals with disabilities are able to participate fully in academic, professional, and campus life, reflecting its strong commitment to inclusivity and universal accessibility.

### **Facilities For persons with disabilities**

#### **1. Special Toilets:**

Shoolini university upholds a strong commitment to inclusivity and ensures that persons with disabilities individuals are treated with dignity and equality. To support this, special toilets have been provided for persons with disabilities across the campus. Dedicated accessible washrooms are available in each academic and administrative block, ensuring convenience and meeting the specific requirements of persons with disabilities students and staff.



**Washroom near Director Operations office**

## **2. Ramps:**

The university remains proactive in creating an inclusive infrastructure and accessible campus environment for persons with disabilities. Accordingly, ramps for wheelchair access have been

installed at key locations across the campus, including the Main Office, Health Center, Ratan Tata Hall, and Engineering and Pharmacy blocks. These facilities ensure safe, convenient, and barrier-free movement for persons with disabilities.





**Pathway for Differently Abled person near Admin block**



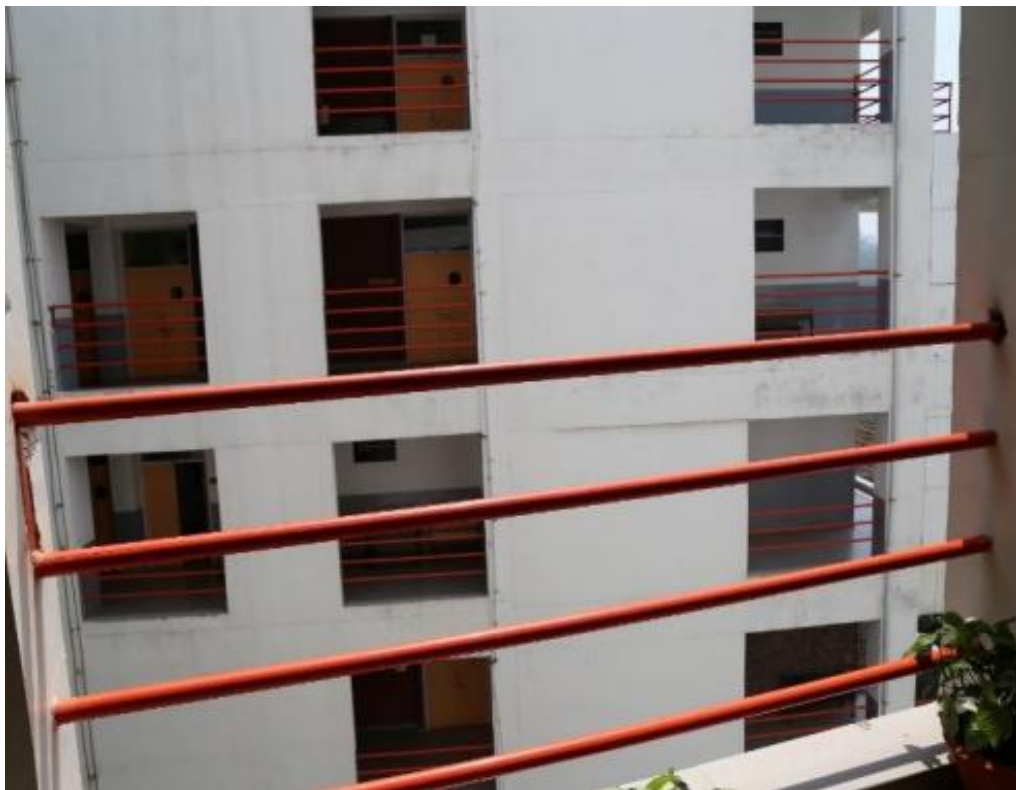
**Pathway to Pharmacy Block**



**Ramp access near OAT to RTH**

### **3. Railings:**

The university has installed railings across academic buildings and hostel areas to support safe mobility for persons with disabilities. All floors are equipped with front railings to enhance safety, while steps and ramps are fitted with sturdy handrails for ease of movement. The main entrances and exits are clearly identifiable and easily accessible, ensuring smooth navigation for all users, including wheelchair users. These provisions contribute to a secure, inclusive, and barrier-free campus environment.



**Railings across the buildings area**

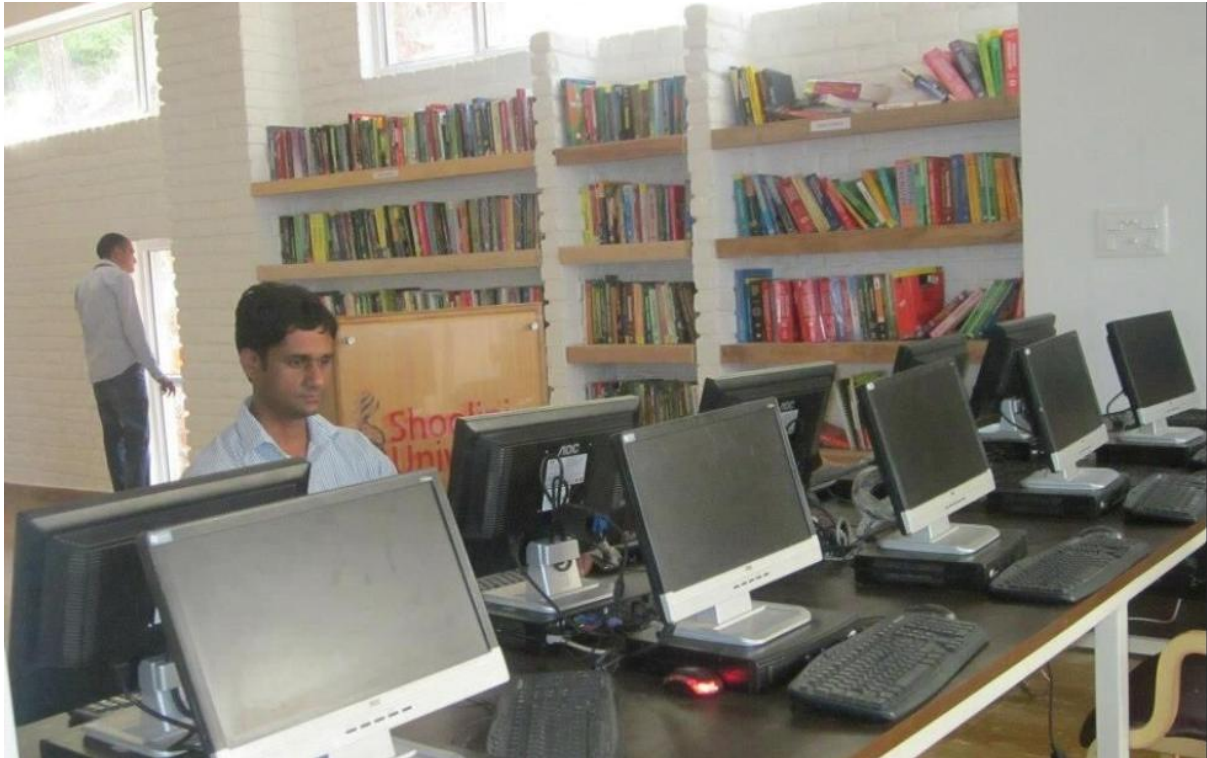
#### 4. Visual-Aid Centre:

The university provides visual-aid support facilities to assist students and staff with moderate vision impairments or reading difficulties. Advanced e-reading devices such as Kindle Paperwhite and Kindle Oasis are made available, enabling users to customize their reading experience according to their needs. Features include adjustable font type, size, and weight, screen brightness, margins, and line spacing, as well as options to invert text and background colors for better visibility.

Additionally, users can save personalized settings and switch between reading modes, while large display options enhance readability by enlarging text and icons. These provisions ensure a comfortable and accessible learning environment, supporting inclusive education for visually challenged individuals.



**Amazon kindle for reading in library**



**Computers in library for study**

#### **5. Accessible Lifts:**

The university provides user-friendly lift facilities to support easy and efficient movement across different floors of academic and hostel buildings. These lifts are designed to be accessible for persons with disabilities, ensuring safe, convenient, and barrier-free mobility for physically challenged students, staff, and visitors across the campus.





**Lift at Shoolini Residences A-block Hostel**



**Lift in G Block**

#### **6. E-Cart Facility:**

Shoolini University provides e-cart transportation facilities to support the mobility needs of differently-abled students, staff, and visitors. These battery-operated vehicles ensure safe, convenient, and eco-friendly movement across the campus, particularly between hostels, academic blocks, and key facilities. The initiative enhances accessibility and promotes an inclusive, barrier-free campus environment.



**E-cart service inside the campus**

#### **7. Hostel Accommodation for Differently Abled Students:**

Shoolini University provides **priority hostel accommodation** for differently abled students, ensuring a safe, comfortable, and inclusive living environment. Specially designed rooms are allocated, typically on the ground floor, to facilitate easy access and mobility. These accommodations are equipped with necessary features such as accessible washrooms, appropriate bed facilities, and barrier-free entry, tailored to meet individual needs. The university ensures that students with disabilities receive adequate support, enabling them to live independently and participate fully in campus life.



**Specially abled room in Boys hostel**



**Specially abled room in Girl hostel**

These facilities ensure seamless mobility, independent living, and equal participation for persons with disabilities across academic and campus life.