

**STRUCTURED FEEDBACK**

**ANALYSIS REPORT**

**2022-23**

**Shoolini University of  
Biotechnology and Management Sciences**



# Shoolini University

## **STRUCTURED FEEDBACK ANALYSIS REPORT**

**Academic Year 2022-2023**

Since 2015, Shoolini University has utilized its LMS eUniv to facilitate a comprehensive feedback mechanism after each academic session. The primary aim of this approach is to gain valuable insights into the institution's teaching methods, reflecting its ongoing commitment to academic advancement.

The university ensures the incorporation of pertinent, proficient, and contemporary curricula for its diverse range of programs, which are instructed by various educators. Central to the teaching and learning process are the roles played by instructors and the curriculum. Given this, feedback stands as a pivotal element in the effective orchestration of the Teaching-Learning Process. Thus, diverse input from stakeholders is amassed, analyzed, and subsequently employed. By leveraging this input, the university establishes a foundation for enhancing its educational environment.

The data is collected from different stakeholders as mentioned in the table below-

**STAKEHOLDERS-**

<b>Sr No.</b>	<b>Stakeholder</b>
<b>1.</b>	<b>Students</b>
<b>2.</b>	<b>Alumni</b>
<b>3.</b>	<b>Employer</b>
<b>4.</b>	<b>Staff</b>



## Student feedback for the teaching-learning process

The assessment of the teaching and learning process occurs through the employment of an online educational platform referred to as LMS eUniv. This platform serves as the repository for online educational materials. Feedback acquisition transpires at the culmination of each academic term, specifically in December and July. This feedback is solicited through a course exit feedback form, which is made available for every enrolled course.

The assessment criteria are meticulously defined and adhered to in the evaluation process. Consequently, an aggregate rating for each faculty member is computed based on the feedback received. The evaluation encompasses a comprehensive set of criteria, providing a well-rounded perspective on the performance of individual courses and overall educational provision.

1	≥4.5	Exceptional
2	4.0-4.49	Very Good
3	3.5-3.99	Fair
4	3.0-3.49	Needs Improvement
5	≤2.99	Unacceptable

The faculty scoring an average rating between 3-4 is counseled by the committee at the school level, while faculty scoring an average rating less than 3 are counseled by the committee at the university level.

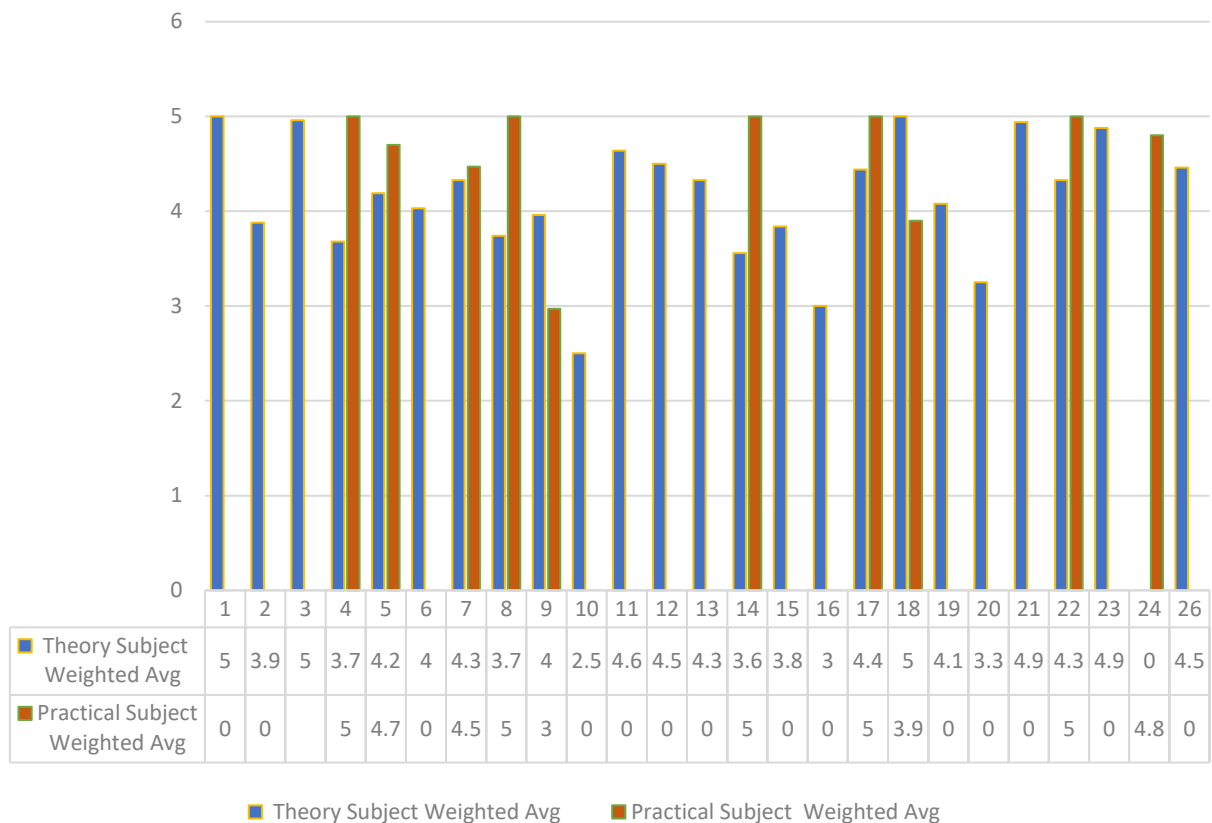
### Criteria for the Teaching-learning Process are as mentioned below-

1. <i>Regular and punctual in taking classes.</i>
2. <i>Has good subject matter knowledge/ command over the subject.</i>
3. <i>The subject or the topic is presented systematically, and clearly &amp; according to the lecture schedule.</i>
4. <i>The syllabus is sufficient to bridge the gap between industry standards /current global scenarios and academics</i>
5. <i>The depth of the course content is adequate to have significant learning outcomes</i>
6. <i>Use of PPTs/ audio-visual aids/ examples/ diagrams and other innovative online pedagogical tools</i>
7. <i>Easily/ comfortably manages/ handles (any misconduct/misbehaviour) the students in class.</i>
8. <i>Language/ Words/ Gestures/ Sound is loud, clear &amp; and easily understood.</i>
9. <i>Course supplement on eUniv is regularly updated with sufficient content (Lecture Schedule, PPT, PDF, notes, Video Lectures)</i>
10. <i>Takes tests, assignments, etc. regularly on eUniv.</i>
11. <i>Online lectures taken are engaging, and interesting, yet full of knowledge</i>
12. <i>Doubts and questions are clarified effectively during online lectures or later</i>
13. <i>Should he/she teach this course to the next set of students?</i>
14. <i>What? is your overall rating for the teacher concerning this course?</i>

**FACULTY OF AGRICULTURE-****Swaminathan School of Agriculture-****Consolidated Data August-December 2022-2023:**

<b>Sr. No.</b>	<b>Faculty Code</b>	<b>Theory Subject</b>	<b>Practical Subject</b>
		<b>Weighted Average</b>	<b>Weighted Average</b>
<b>1</b>	<b>SU1</b>	<b>5</b>	<b>-</b>
<b>2</b>	<b>SU2</b>	<b>3.88</b>	<b>-</b>
<b>3</b>	<b>SU3</b>	<b>4.96</b>	
<b>4</b>	<b>SU4</b>	<b>3.68</b>	<b>5</b>
<b>5</b>	<b>SU5</b>	<b>4.19</b>	<b>4.7</b>
<b>6</b>	<b>SU6</b>	<b>4.03</b>	<b>-</b>
<b>7</b>	<b>SU7</b>	<b>4.33</b>	<b>4.47</b>
<b>8</b>	<b>SU8</b>	<b>3.74</b>	<b>5</b>
<b>9</b>	<b>SU9</b>	<b>3.96</b>	<b>2.97</b>
<b>10</b>	<b>SU10</b>	<b>2.5</b>	<b>-</b>
<b>11</b>	<b>SU11</b>	<b>4.64</b>	<b>-</b>
<b>12</b>	<b>SU12</b>	<b>4.5</b>	<b>-</b>
<b>13</b>	<b>SU13</b>	<b>4.33</b>	<b>-</b>
<b>14</b>	<b>SU14</b>	<b>3.56</b>	<b>5</b>
<b>15</b>	<b>SU15</b>	<b>3.84</b>	<b>-</b>
<b>16</b>	<b>SU16</b>	<b>3</b>	<b>-</b>
<b>17</b>	<b>SU17</b>	<b>4.44</b>	<b>5</b>
<b>18</b>	<b>SU18</b>	<b>5</b>	<b>3.9</b>
<b>19</b>	<b>SU19</b>	<b>4.08</b>	<b>-</b>
<b>20</b>	<b>SU20</b>	<b>3.25</b>	<b>-</b>
<b>21</b>	<b>SU21</b>	<b>4.94</b>	<b>-</b>
<b>22</b>	<b>SU22</b>	<b>4.33</b>	<b>5</b>
<b>23</b>	<b>SU23</b>	<b>4.88</b>	<b>-</b>
<b>24</b>	<b>SU24</b>	<b>-</b>	<b>4.8</b>
<b>26</b>	<b>SU25</b>	<b>4.46</b>	<b>-</b>

## FEEDBACK AUGUST TO DECEMBER

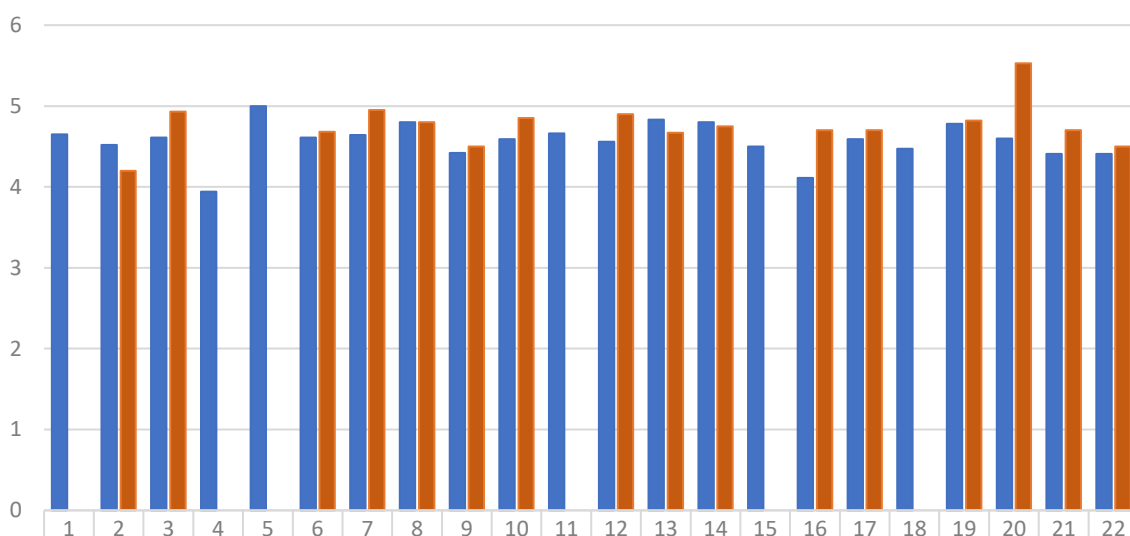
**AUGUST-DECEMBER**

*The faculty members were evaluated based on the average ratings for their Theory Subjects and practical subjects. On average, the faculty received a relatively high rating of 4.14 for Theory Subjects and 4.35 for practical subjects, indicating a generally positive perception of their teaching abilities. However, faculty getting lower average scores were informed by the concerned HOS.*

**Consolidated Data January-July 2022-2023:**

Sr. No.	Faculty Code	Theory Subject	Practical Subject
		Weighted Average	Weighted Average
1	SU1	4.65	-
2	SU2	4.52	4.20
3	SU3	4.61	4.93
4	SU4	3.94	-
5	SU5	5.00	-
6	SU6	4.61	4.68
7	SU7	4.64	4.95
8	SU8	4.80	4.80
9	SU9	4.42	4.50
10	SU10	4.59	4.85
11	SU11	4.66	-
12	SU12	4.56	4.90
13	SU13	4.83	4.67
14	SU14	4.80	4.75
15	SU15	4.50	-
16	SU16	4.11	4.70
17	SU17	4.59	4.70
18	SU18	4.47	-
19	SU19	4.78	4.82
20	SU20	4.60	5.53
21	SU21	4.41	4.70
22	SU22	4.41	4.50

## FEEDBACK JANUARY TO JULY



■ Theory Subject Weighted Avg    ■ Practical Subject Weighted Avg

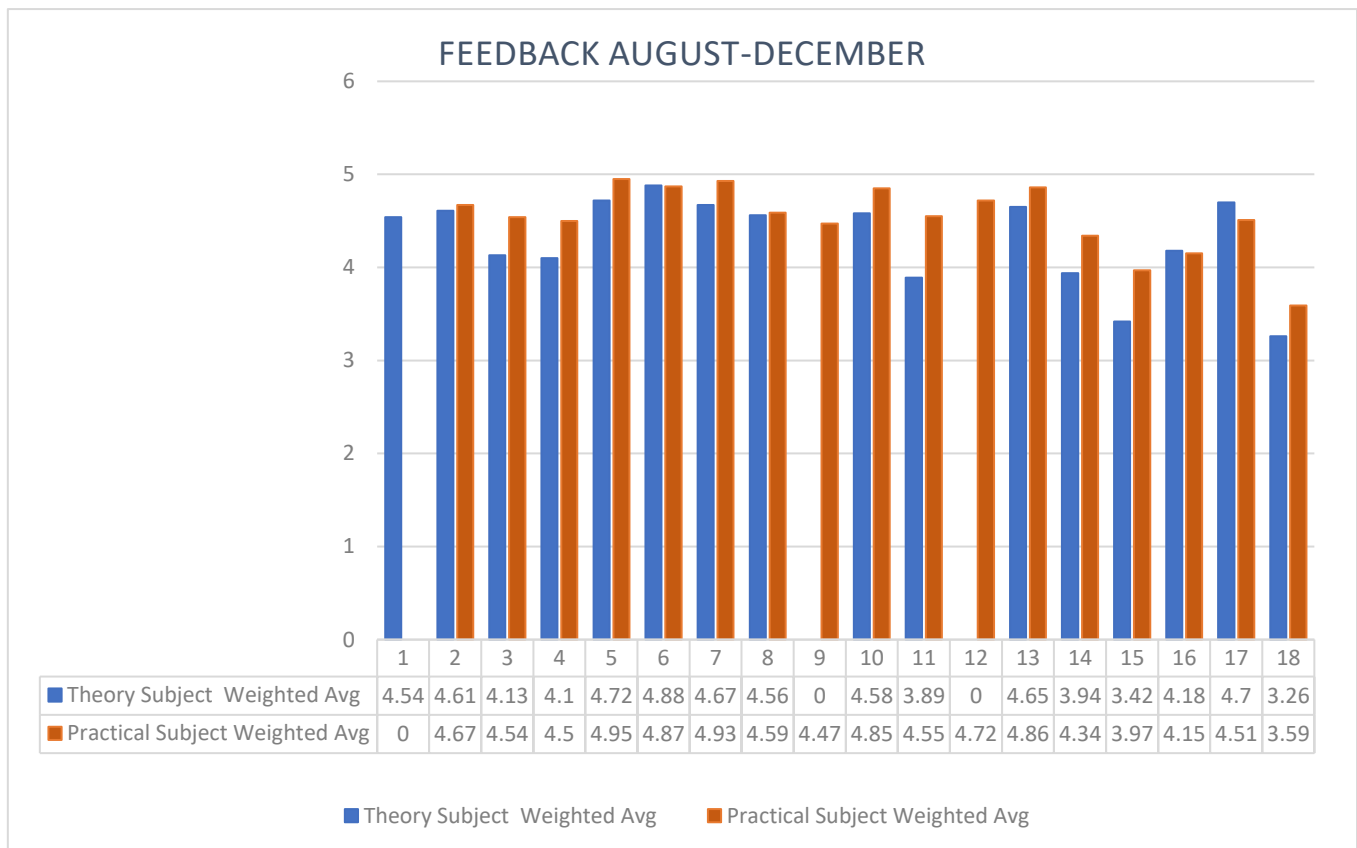
**JANUARY-JULY****Figure-1.1-Graph Showing Student Feedback Teaching-Learning Process**

*The overall feedback for Theory Subjects, with an average rating of 4.11 to 4.83. Practical sessions also receive favorable feedback, with average ratings ranging from 4.20 to 5.53. Students appreciate effective teaching, as evidenced by high average ratings. The feedback was shared with the concerned HOS.*



**Faculty of Applied Sciences-****SCHOOL OF BIOTECHNOLOGY-****Consolidated Data August-December 2022-2023:**

Sr. No.	Faculty Code	Theory Subject	Practical Subject
		Weighted Average	Weighted Average
1	SU1	4.54	-
2	SU2	4.61	4.67
3	SU3	4.13	4.54
4	SU4	4.10	4.50
5	SU5	4.72	4.95
6	SU6	4.88	4.87
7	SU7	4.67	4.93
8	SU8	4.56	4.59
9	SU9	-	4.47
10	SU10	4.58	4.85
11	SU11	3.89	4.55
12	SU12	-	4.72
13	SU13	4.65	4.86
14	SU14	3.94	4.34
15	SU15	3.42	3.97
16	SU16	4.18	4.15
17	SU17	4.70	4.51
18	SU18	3.26	3.59



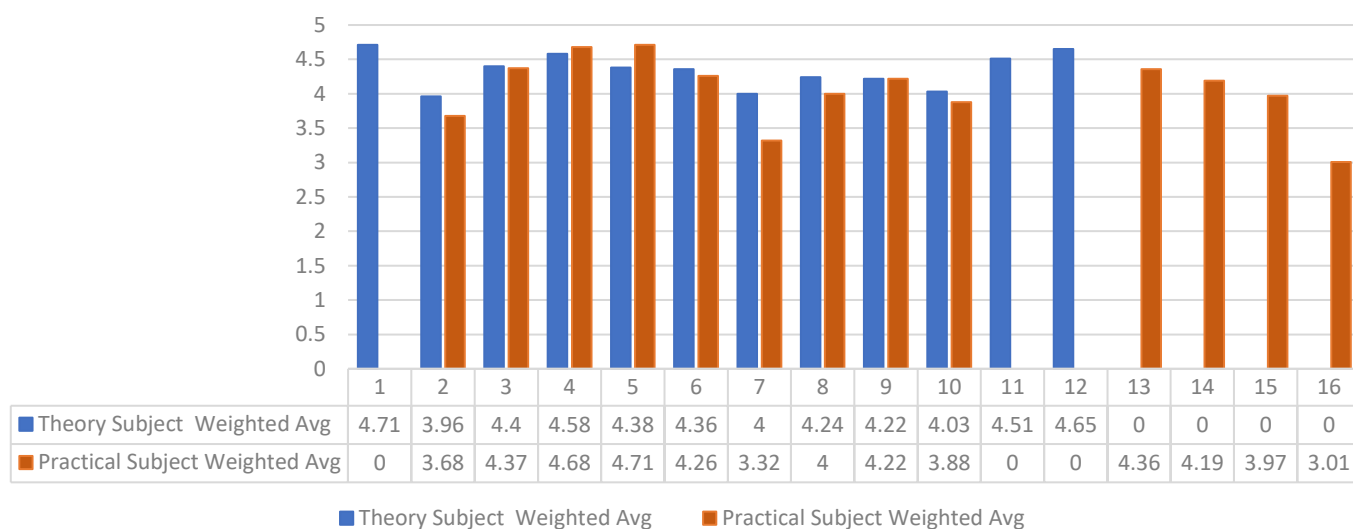
### AUGUST-DECEMBER

*Based on the average ratings for both Theory Subjects and practical subjects, faculty members displayed varying levels of teaching effectiveness. The average rating for Theory subjects for all faculty members was 4.29, reflecting generally strong teaching quality. Practical subjects received an average rating of 4.57. However, faculty members getting lower average scores were informed by the concerned HOS.*

**Consolidated Data January-July 2022-2023:**

Sr. No	Faculty members Code	Theory Subject	Practical Subject
		Weighted Average	Weighted Average
1	SU1	4.71	-
2	SU2	3.96	3.68
3	SU3	4.40	4.37
4	SU4	4.58	4.68
5	SU5	4.38	4.71
6	SU6	4.36	4.26
7	SU7	4.00	3.32
8	SU8	4.24	4.00
9	SU9	4.22	4.22
10	SU10	4.03	3.88
11	SU11	4.51	-
12	SU12	4.65	-
13	SU13	-	4.36
14	SU14	-	4.19
15	SU15	-	3.97
16	SU16	-	3.01

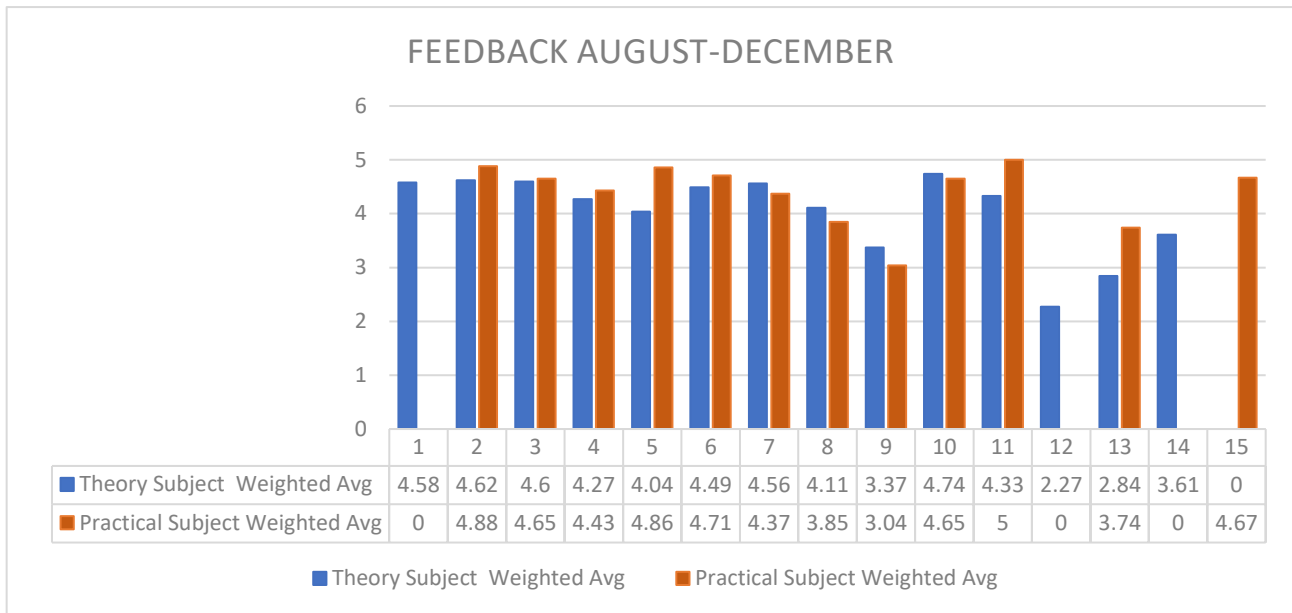
## FEEDBACK JANUARY TO JULY

**JANUARY-JULY****Figure-2.1-Graph Showing Student Feedback Teaching-Learning Process**

*The feedback summary for the given data reveals varying levels of satisfaction among faculty members based on Theory subjects and practical subjects. On average, faculty members received a high average rating for Theory Subject, with an overall average of approximately 4.29. However, for practical subjects, the satisfaction levels were slightly lower, with an average rating of around 4.01. The above feedback was shared with the HOS.*

**School of Bioengineering & Food Technology****Consolidated Data August-December 2022-2023:**

Sr. No.	Faculty members Code	Theory Subject	Practical Subject
		Weighted Average	Weighted Average
1	SU1	4.58	-
2	SU2	4.62	4.88
3	SU3	4.60	4.65
4	SU4	4.27	4.43
5	SU5	4.04	4.86
6	SU6	4.49	4.71
7	SU7	4.56	4.37
8	SU8	4.11	3.85
9	SU9	3.37	3.04
10	SU10	4.74	4.65
11	SU11	4.33	5.00
12	SU12	2.27	-
13	SU13	2.84	3.74
14	SU14	3.61	-
15	SU15	-	4.67



### AUGUST-DECEMBER

---

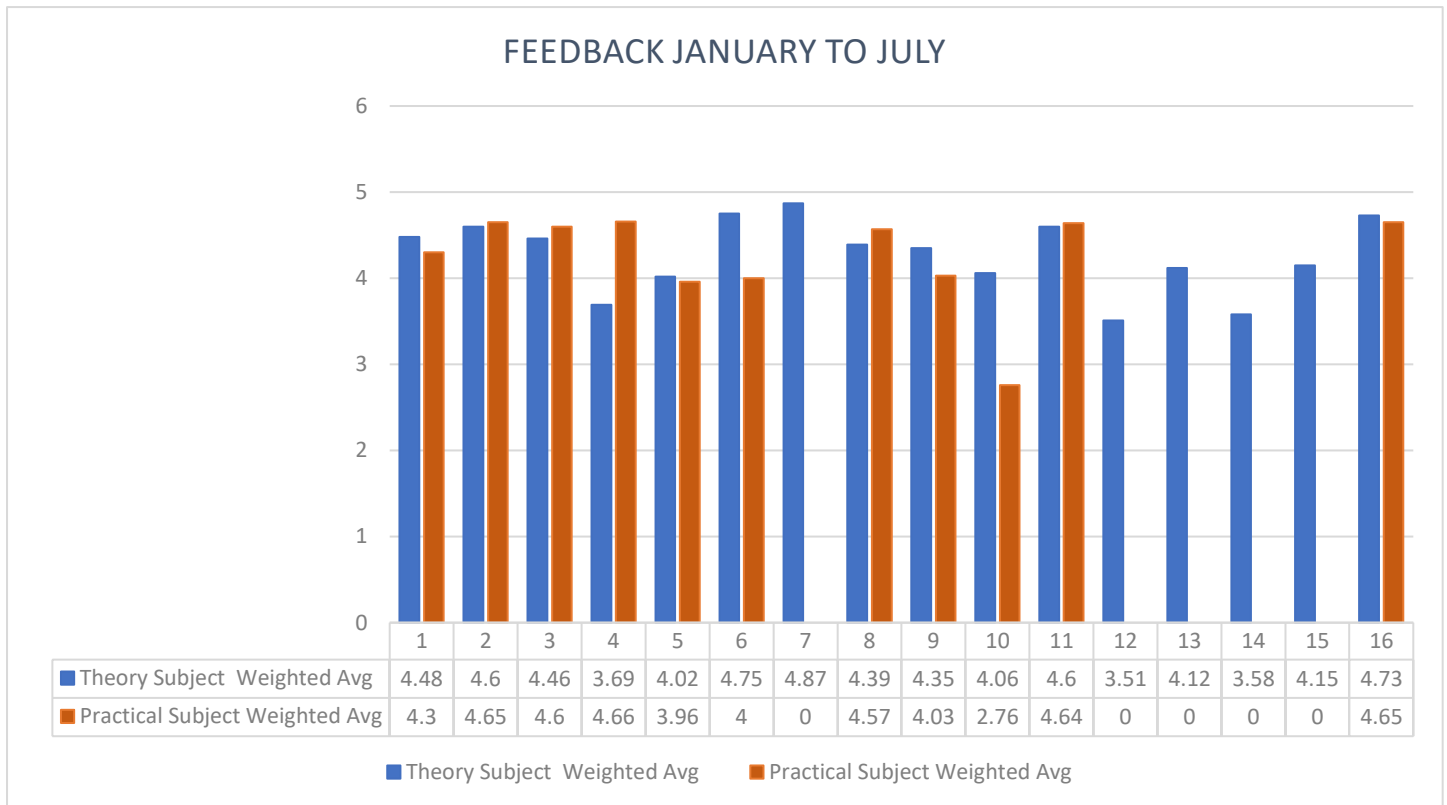
*In assessing the performance of various faculty members based on student feedback, it is evident that there is considerable variability in the averages for both Theory Subjects and practical subjects. For the Theory Subject, the average rating ranges from a high of 4.74 to a low of 2.27. This indicates a significant disparity in teaching effectiveness as perceived by students. On the other hand, for practical subjects, the average rating is 5 to 3.04, displaying a slightly narrower range. However, faculty members getting lower average scores were informed by the concerned HOS.*

---



**Consolidated Data January-July 2022-2023:**

Sr. No.	Faculty members code	Theory Subject	Practical Subject
		Weighted Average	Weighted Average
1	SU1	4.48	4.30
2	SU2	4.60	4.65
3	SU3	4.46	4.60
4	SU4	3.69	4.66
5	SU5	4.02	3.96
6	SU6	4.75	4.00
7	SU7	4.87	-
8	SU8	4.39	4.57
9	SU9	4.35	4.03
10	SU10	4.06	2.76
11	SU11	4.60	4.64
12	SU12	3.51	-
13	SU13	4.12	-
14	SU14	3.58	-
15	SU15	4.15	-
16	SU16	4.73	4.65



### JANUARY-JULY

**Figure-2.2-Graph Showing Student Feedback Teaching-Learning Process**

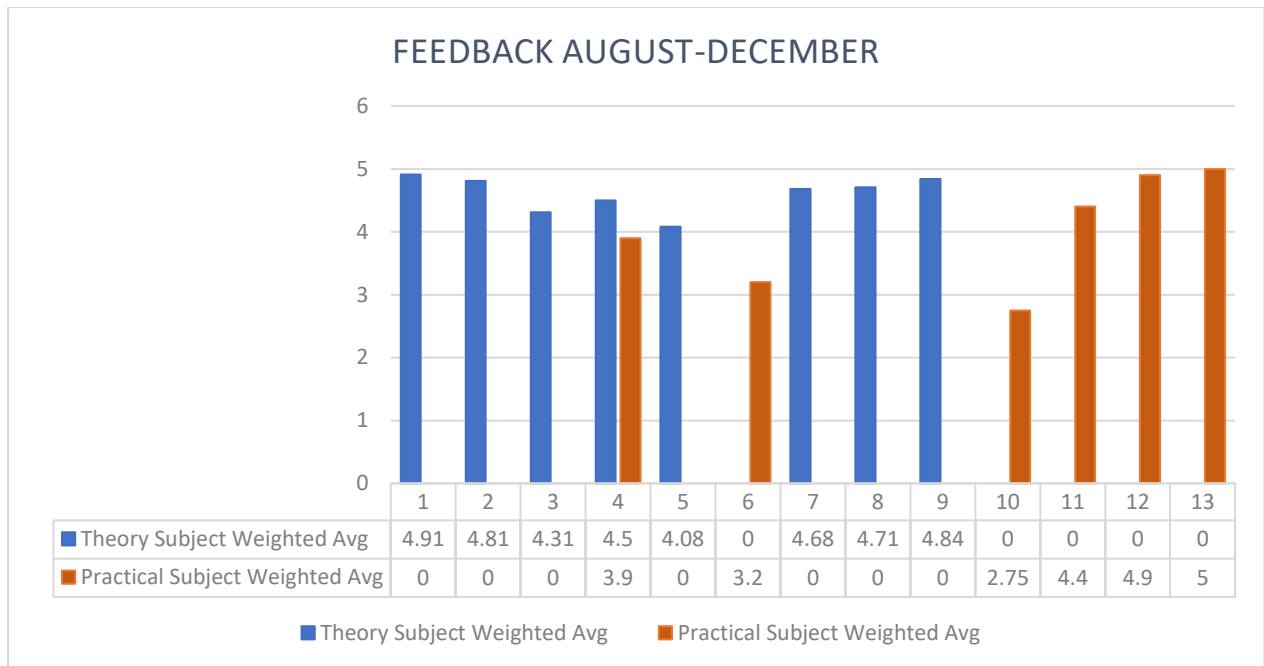
---

*Overall, the Theory Subject sessions received positive feedback with average ratings ranging from 3.51 to 4.75. Practical sessions also received favourable ratings with an average ranging from 2.76 to 4.66. The feedback was shared with the concerned HOS.*

---

**FACULTY MEMBERS OF BASIC SCIENCES-****School of Advanced Chemical Sciences-****Consolidated Data August-December 2022-2023:**

Sr. No.	Faculty members Code	Theory Subject	Practical Subject
		Weighted Average	Weighted Average
1	SU1	4.91	-
2	SU2	4.81	-
3	SU3	4.31	-
4	SU4	4.50	3.90
5	SU5	4.08	-
6	SU6		3.20
7	SU7	4.68	-
8	SU8	4.71	-
9	SU9	4.84	-
10	SU10	-	2.75
11	SU11	-	4.40
12	SU12	-	4.90
13	SU13	-	5.00



### AUGUST-DECEMBER

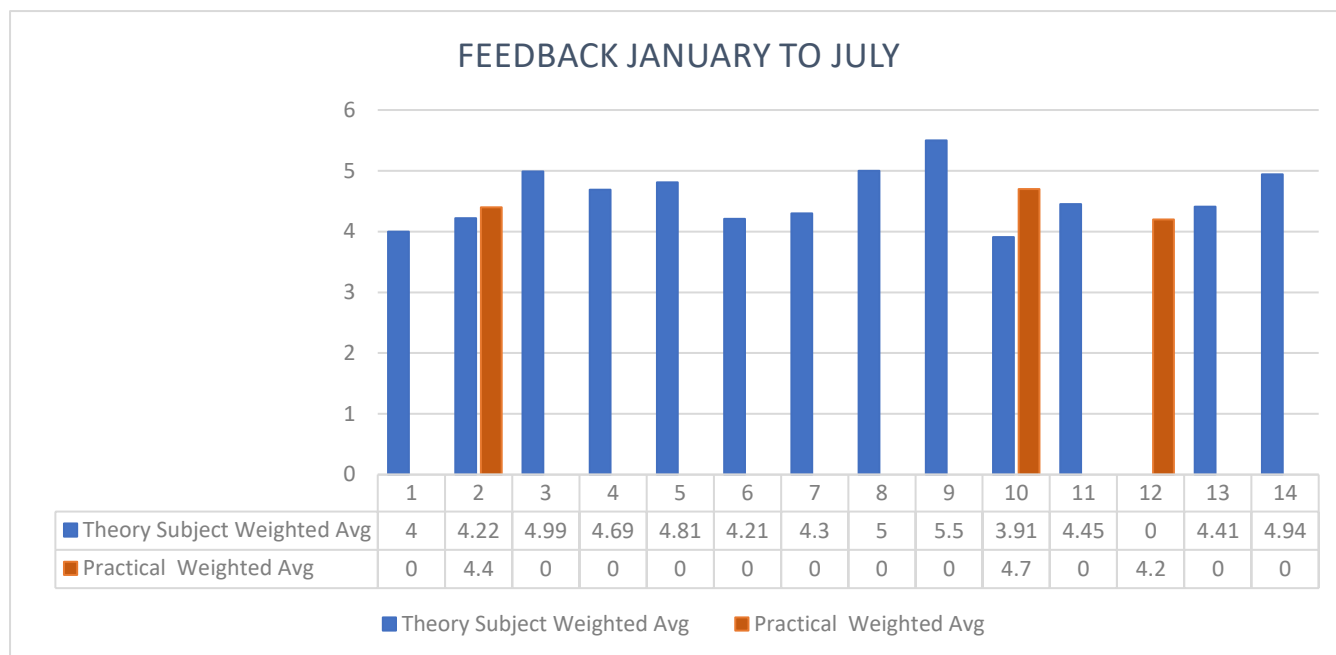
---

*In this evaluation of faculty members' performance, it's evident that the average ratings for Theory Subjects and practical subjects vary. For Theory Subject, the average ratings range from 2.27 to 4.74, indicating differing levels of teaching effectiveness. Similarly, in practical subjects, the averages span from 3.04 to 4.88, showcasing variations in instructional quality. These discrepancies highlight the diversity in teaching approaches and student satisfaction among the faculty members. However, faculty members getting lower average scores were informed by the concerned HOS.*

---

**Consolidated Data January-July 2022-2023:**

<b>Sr. No.</b>	<b>Faculty members Code</b>	<b>Theory Subject</b>	<b>Practical</b>
		<b>Weighted Average</b>	<b>Weighted Average</b>
<b>1</b>	<b>SU1</b>	<b>4.00</b>	<b>-</b>
<b>2</b>	<b>SU2</b>	<b>4.22</b>	<b>4.40</b>
<b>3</b>	<b>SU3</b>	<b>4.99</b>	<b>-</b>
<b>4</b>	<b>SU4</b>	<b>4.69</b>	<b>-</b>
<b>5</b>	<b>SU5</b>	<b>4.81</b>	<b>-</b>
<b>6</b>	<b>SU6</b>	<b>4.21</b>	<b>-</b>
<b>7</b>	<b>SU7</b>	<b>4.30</b>	<b>-</b>
<b>8</b>	<b>SU8</b>	<b>5.00</b>	<b>-</b>
<b>9</b>	<b>SU9</b>	<b>5.50</b>	<b>-</b>
<b>10</b>	<b>SU10</b>	<b>3.91</b>	<b>4.7</b>
<b>11</b>	<b>SU11</b>	<b>4.45</b>	<b>-</b>
<b>12</b>	<b>SU12</b>	<b>-</b>	<b>4.20</b>
<b>13</b>	<b>SU13</b>	<b>4.41</b>	<b>-</b>
<b>14</b>	<b>SU14</b>	<b>4.94</b>	<b>-</b>



### **JANUARY-JULY**

**Figure-3.1-Graph showing Student Feedback Teaching-Learning Process**

---

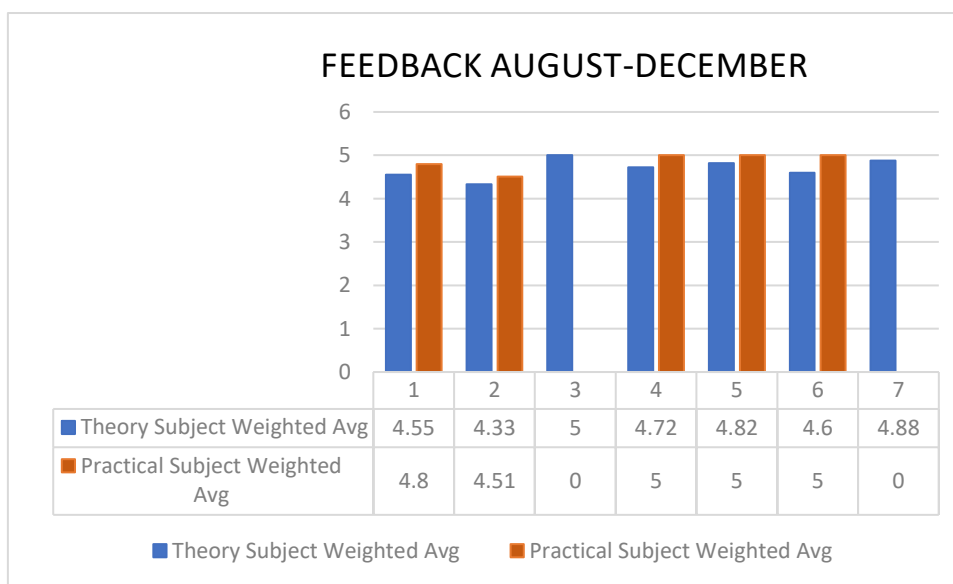
*Overall, students have provided positive ratings for Theory Subject, ranging from 3.91 to 5.50. Practical sessions also received favorable feedback, with an average ranging from 4.20 to 4.70. The Head of School (HOS) has been informed about the feedback, emphasizing the need for ongoing improvement to enrich the educational experience for the students.*

---



**School of Biological and Environmental Sciences****Consolidated Data August-December 2022-2023:**

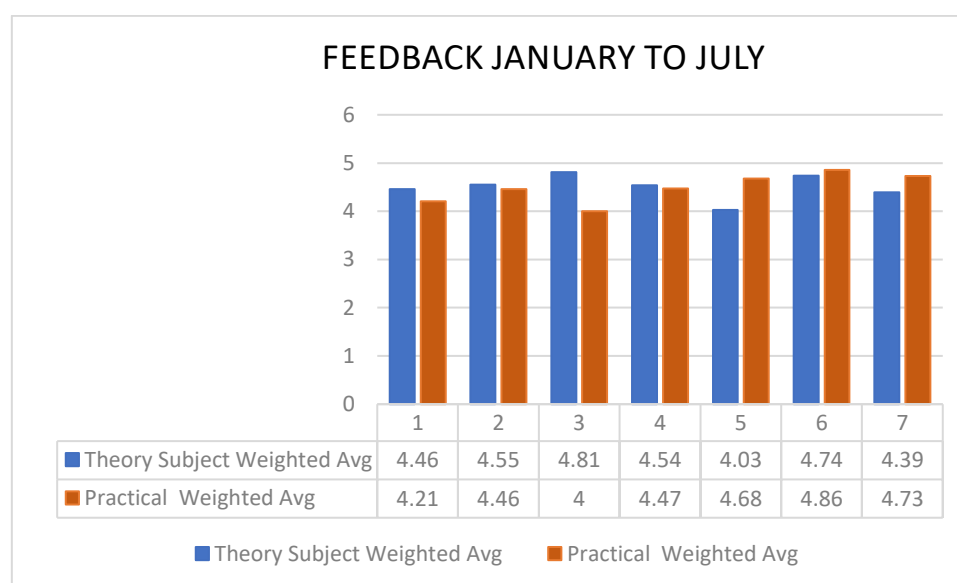
Sr. No.	Faculty members Code	Theory Subject	Practical Subject
		Weighted Average	Weighted Average
1	SU1	4.55	4.80
2	SU2	4.33	4.51
3	SU3	5.00	-
4	SU4	4.72	5.00
5	SU5	4.82	5.00
6	SU6	4.60	5.00
7	SU7	4.88	-

**AUGUST-DECEMBER**

*In the assessment of faculty member's performance based on student feedback, there is a range of average ratings for both Theory subjects and practical Subjects. , for the theory Subject, the average ratings vary from 4.33 to 5.00. This suggests that there is generally high satisfaction with their teaching in Theory Subject classes, In practical subjects, the averages are even more impressive, ranging from 4.51 to a perfect 5.00. The Concerned HOS was informed about the feedback.*

**Consolidated Data January-July 2022-2023:**

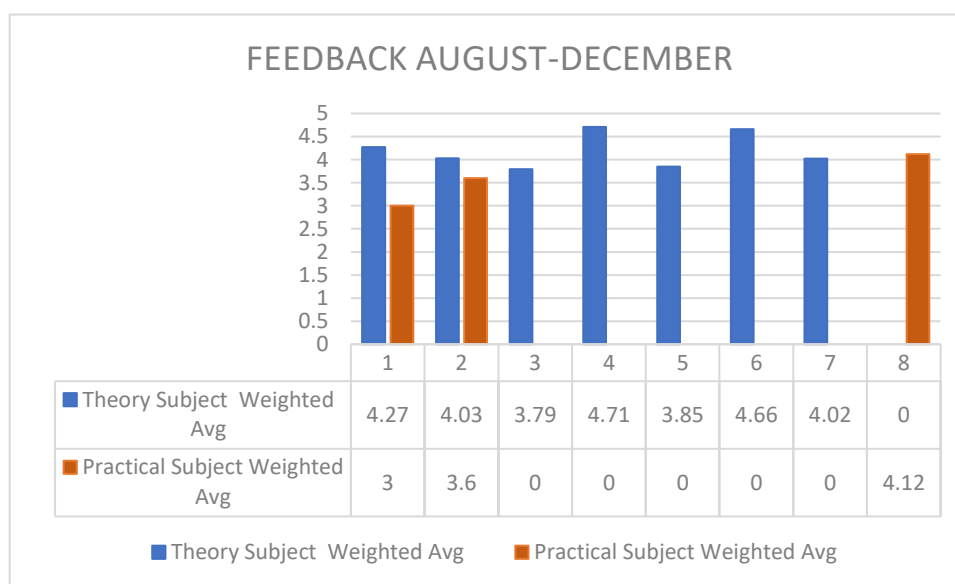
Sr. No.	Faculty members Code	Theory Subject	Practical
		Weighted Average	Weighted Average
1	SU1	4.46	4.21
2	SU2	4.55	4.46
3	SU3	4.81	4.00
4	SU4	4.54	4.47
5	SU5	4.03	4.68
6	SU6	4.74	4.86
7	SU7	4.39	4.73

**JANUARY-JULY****Figure-3.2-Graph Showing Student Feedback Teaching-Learning Process**

*Overall, the feedback for Theory Subject sessions is positive, with average ratings ranging from 4.03 to 4.81. Practical sessions also received favorable ratings, with averages ranging from 4.00 to 4.86. The Head of School (HOS) has been informed about the feedback, emphasizing the need for continuous improvement and maintaining the positive subject of teaching and learning.*

**School of Physics and Material Sciences****Consolidated Data August-December 2022-2023:**

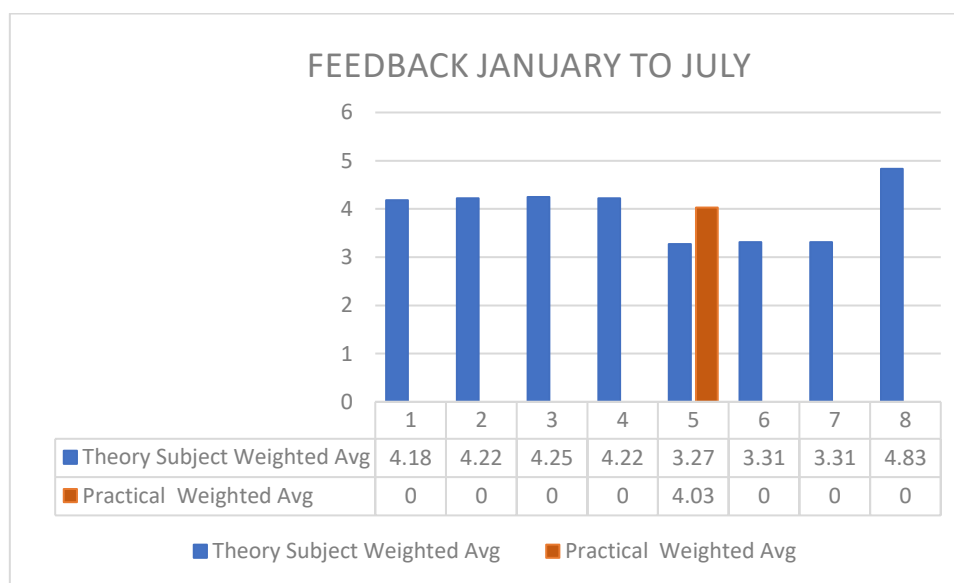
Sr. No.	Faculty members Code	Theory Subject	Practical Subject
		Weighted Average	Weighted Average
1	SU1	4.27	3
2	SU2	4.03	3.6
3	SU3	3.79	-
4	SU4	4.71	-
5	SU5	3.85	-
6	SU6	4.66	-
7	SU7	4.02	-
8	SU8	-	4.12

**AUGUST-DECEMBER**

*The faculty members' performance, as evaluated through student feedback, displays variations in average ratings for both Theory Subjects and practical subjects. For Theory Subject, the average ratings range from 3.79 to 4.71, illustrating differences in teaching effectiveness. In the realm of practical subjects, the averages span from 3.6 to 4.12. However, faculty members getting lower average scores were informed by the concerned HOS.*

**Consolidated Data January-July 2022-2023:**

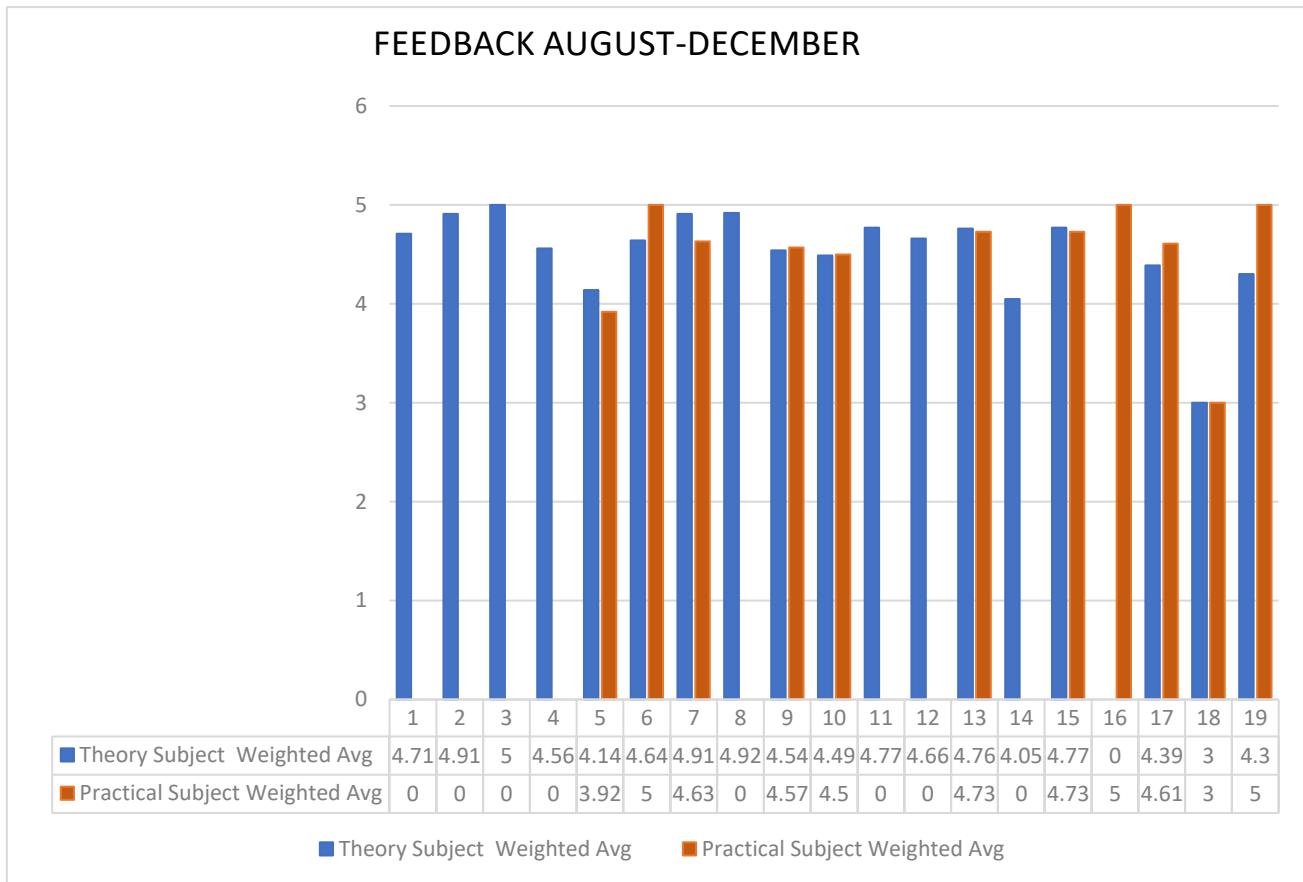
Sr. No.	Faculty members Code	Theory Subject	Practical
		Weighted Average	Weighted Average
1	SU1	4.18	-
2	SU2	4.22	-
3	SU3	4.25	-
4	SU4	4.22	-
5	SU5	3.27	4.03
6	SU6	3.31	-
7	SU7	3.31	-
8	SU8	4.83	-

**JANUARY-JULY****Figure-3.3-Graph Showing Student Feedback Teaching-Learning Process**

*The average ratings for Theory Subject sessions range from 3.27 to 4.83, indicating varying levels of satisfaction. Practical sessions received feedback from a few faculties with average ratings from 4.03 to 4.22. The Head of School (HOS) has been informed about the feedback, highlighting the areas that require attention and improvement to ensure a better learning environment.*

**FACULTY MEMBERS OF ENGINEERING****School of Mechanical, Civil, Electronics & Electrical Engineering-****Consolidated Data August-December 2022-2023:**

Sr. No.	Faculty members Code	Theory Subject	Practical Subject
		Weighted Average	Weighted Average
1	SU1	4.71	-
2	SU2	4.91	-
3	SU3	5.00	-
4	SU4	4.56	-
5	SU5	4.14	3.92
6	SU6	4.64	5.00
7	SU7	4.91	4.63
8	SU8	4.92	-
10	SU9	4.54	4.57
11	SU10	4.49	4.50
12	SU11	4.77	-
13	SU12	4.66	-
14	SU13	4.76	4.73
15	SU14	4.05	-
16	SU15	4.77	4.73
17	SU16	-	5.00
18	SU17	4.39	4.61
19	SU18	3.00	3.00
20	SU19	4.30	5.00



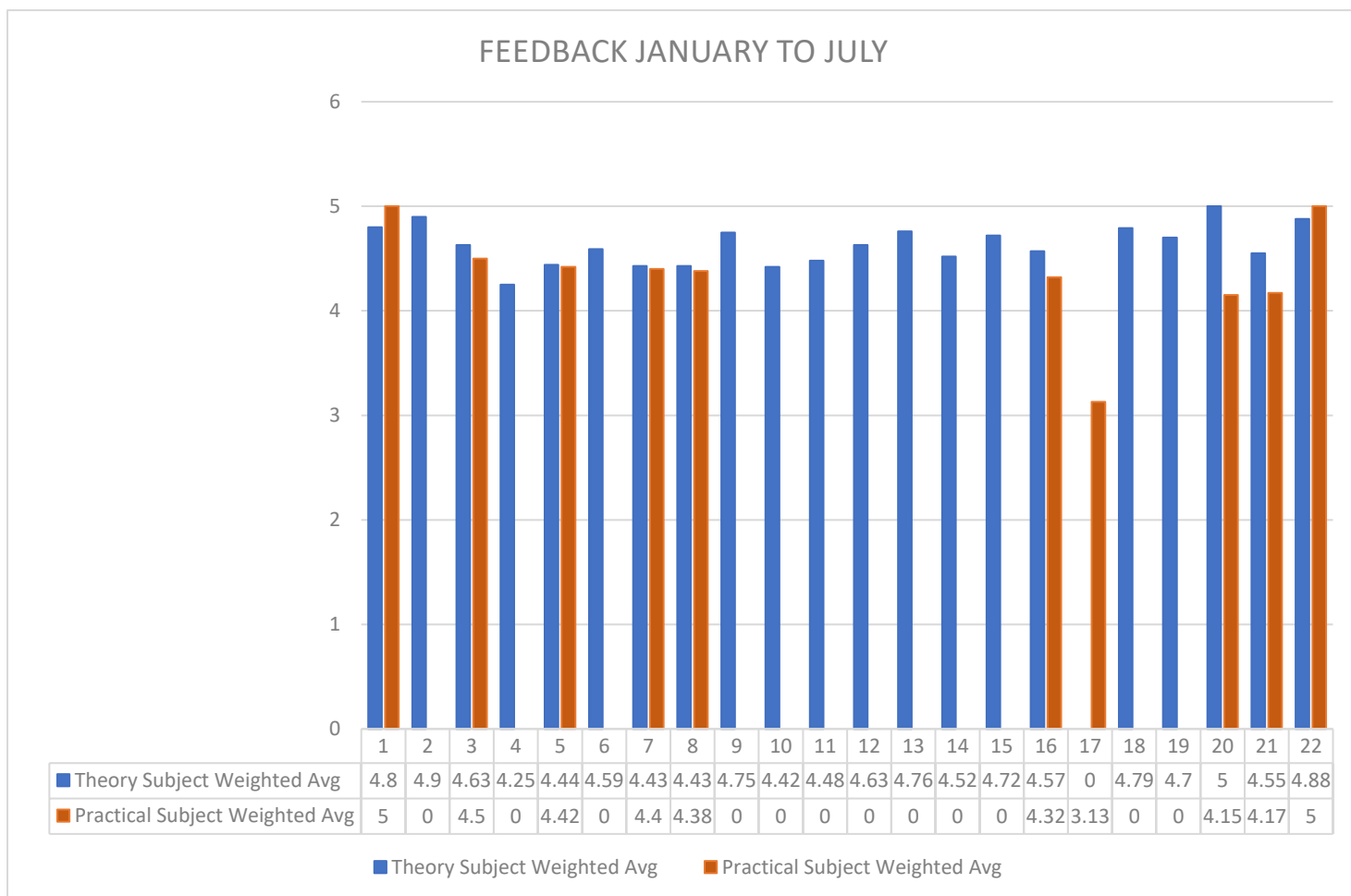
### AUGUST-DECEMBER

*On average, faculty members received ratings ranging from 3.00 to 5.00 in Theory Subject, with an overall average of approximately 4.54. In the practical subjects, the average ratings ranged from 3.00 to 5.00, with an overall average of around 4.36. However, faculty members getting lower average scores were informed by the concerned HOS.*



**Consolidated Data January-July 2022-2023:**

Sr. No.	Faculty members Code	Theory Subject	Practical Subject
		Weighted Average	Weighted Average
1	SU1	4.80	5.00
2	SU2	4.90	-
3	SU3	4.63	4.50
4	SU4	4.25	--
5	SU5	4.44	4.42
6	SU6	4.59	-
7	SU7	4.43	4.40
8	SU8	4.43	4.38
9	SU9	4.75	-
10	SU10	4.42	--
11	SU11	4.48	-
12	SU12	4.63	-
13	SU13	4.76	-
14	SU14	4.52	-
15	SU15	4.72	-
16	SU16	4.57	4.32
17	SU17	-	3.13
18	SU18	4.79	-
19	SU19	4.70	-
20	SU20	5.00	4.15
21	SU21	4.55	4.17
22	SU22	4.88	5.00



### JANUARY-JULY

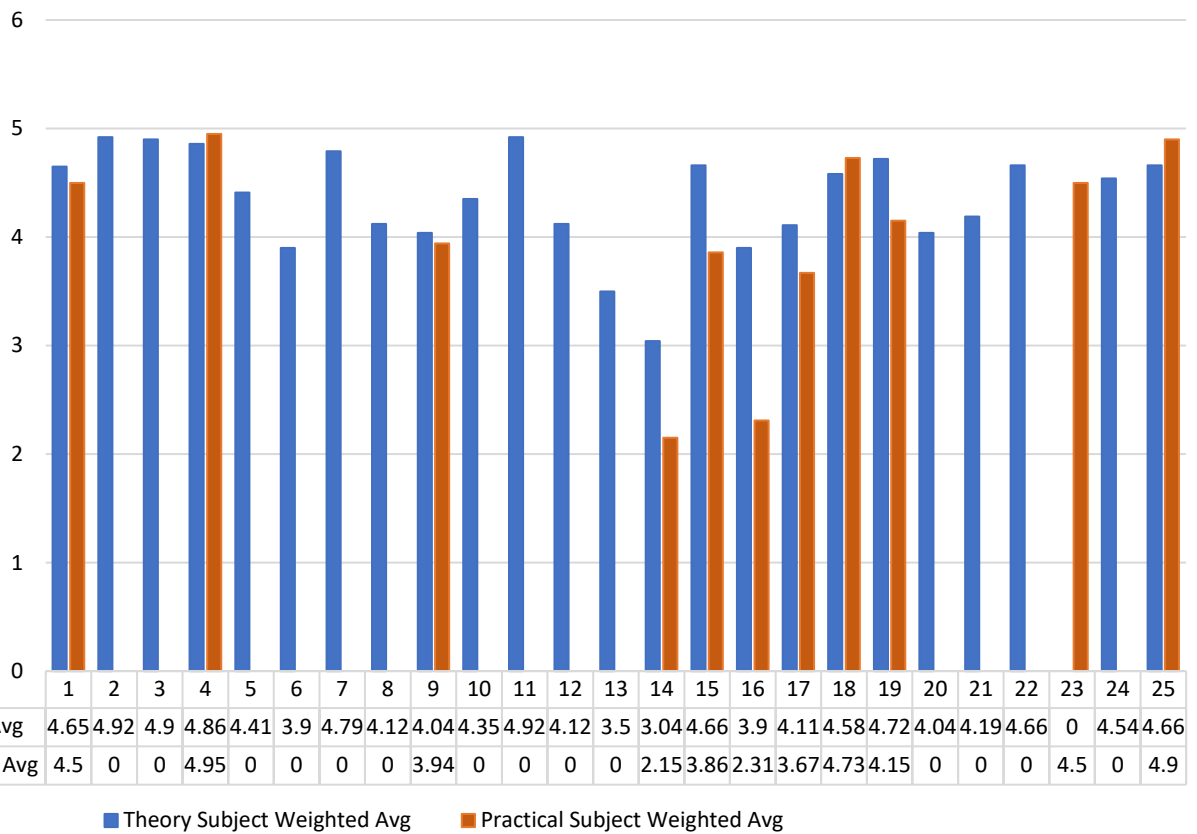
**Figure-4.1-Graph Showing Student Feedback Teaching-Learning Process**

*The average ratings for theory subjects range from 4.25 to 4.90, demonstrating a high level of satisfaction. Practical subjects also received positive ratings, ranging from 3.13 to 5.00, highlighting effective teaching and engagement. The Head of School (HOS) has been informed about the feedback, emphasizing the need to maintain high-quality education for both theory and practical subjects.*

**Yoganand School of AI, Computer & Data Sciences-****Consolidated Data August-December 2022-2023:**

Sr. No.	Faculty members Code	Theory Subject	Practical Subject
		Weighted Average	Weighted Average
1	SU1	4.65	4.50
2	SU2	4.92	-
3	SU3	4.90	-
4	SU4	4.86	4.95
5	SU5	4.41	-
6	SU6	3.90	-
7	SU7	4.79	-
8	SU8	4.12	-
9	SU9	4.04	3.94
10	SU10	4.35	-
11	SU11	4.92	-
12	SU12	4.12	-
13	SU13	3.50	-
14	SU14	3.04	2.15
15	SU15	4.66	3.86
16	SU16	3.90	2.31
17	SU17	4.11	3.67
18	SU18	4.58	4.73
19	SU19	4.72	4.15
20	SU20	4.04	-
21	SU21	4.19	-
22	SU22	4.66	-
23	SU23	-	4.50
24	SU24	4.54	-
25	SU25	4.66	4.90

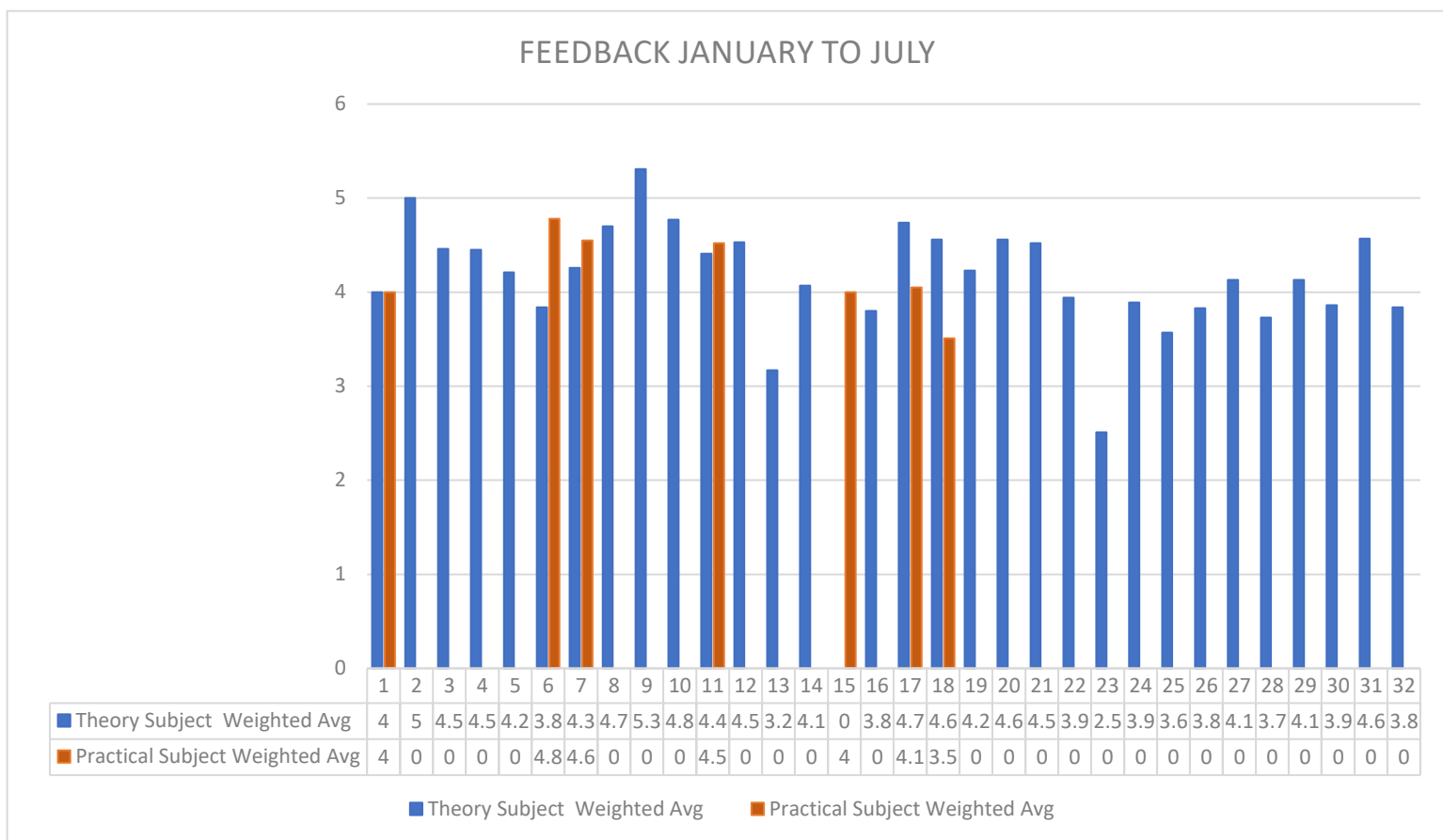
## FEEDBACK AUGUST-DECEMBER

**AUGUST-DECEMBER**

*In Theory Subject, the average ratings range from 3.04 to 4.92, with an overall average of approximately 4.37. In practical subjects, the average ratings range from 2.15 to 4.95, with an overall average of around 3.91. However, faculty members getting lower average scores were informed by the concerned HOS.*

**Consolidated Data January-July 2022-2023:**

Sr. No.	Faculty members Code	Theory Subject	Practical Subject
		Weighted Average	Weighted Average
1	SU1	4.00	4.00
2	SU2	5.00	-
3	SU3	4.46	-
4	SU4	4.45	-
5	SU5	4.21	-
6	SU6	3.84	4.78
7	SU7	4.26	4.55
8	SU8	4.70	-
9	SU9	5.31	-
10	SU10	4.77	-
11	SU11	4.41	4.52
12	SU12	4.53	-
13	SU13	3.17	-
14	SU14	4.07	-
15	SU15	-	4.00
16	SU16	3.80	-
17	SU17	4.74	4.05
18	SU18	4.56	3.51
19	SU19	4.23	-
20	SU20	4.56	-
21	SU21	4.52	-
22	SU22	3.94	-
23	SU23	2.51	-
24	SU24	3.89	-
25	SU25	3.57	-
26	SU26	3.83	-
27	SU27	4.13	-
28	SU28	3.73	-
29	SU29	4.13	-
30	SU30	3.86	-
31	SU31	4.57	-
32	SU32	3.84	-



### JANUARY-JULY

**Figure-4.2-Graph Showing Student Feedback Teaching-Learning Process**

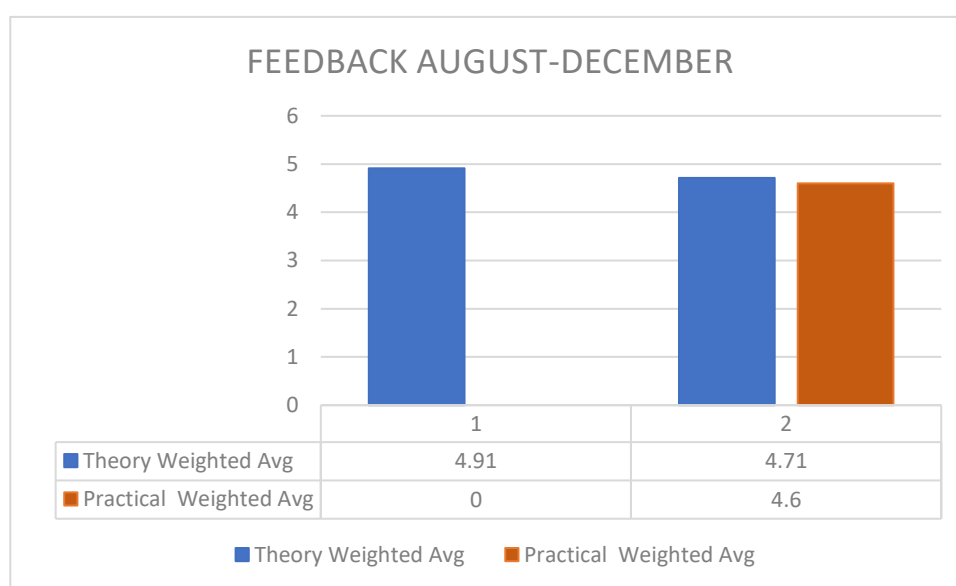
---

Theory Subject session ratings vary from 2.51 to 5.31, reflecting a range of satisfaction levels. Practical session feedback is limited, but ratings range from 3.51 to 4.78, indicating a generally positive trend. The Head of School (HOS) has been informed about the feedback, highlighting the need for subject evaluation and enhancement of teaching strategies.

---

**School of Design****Consolidated Data August-December 2022-2023:**

Sr. No.	Faculty members Code	Theory	Practical
		Weighted Average	Weighted Average
1	SU1	4.91	-
2	SU2	4.71	4.60

**AUGUST-DECEMBER**

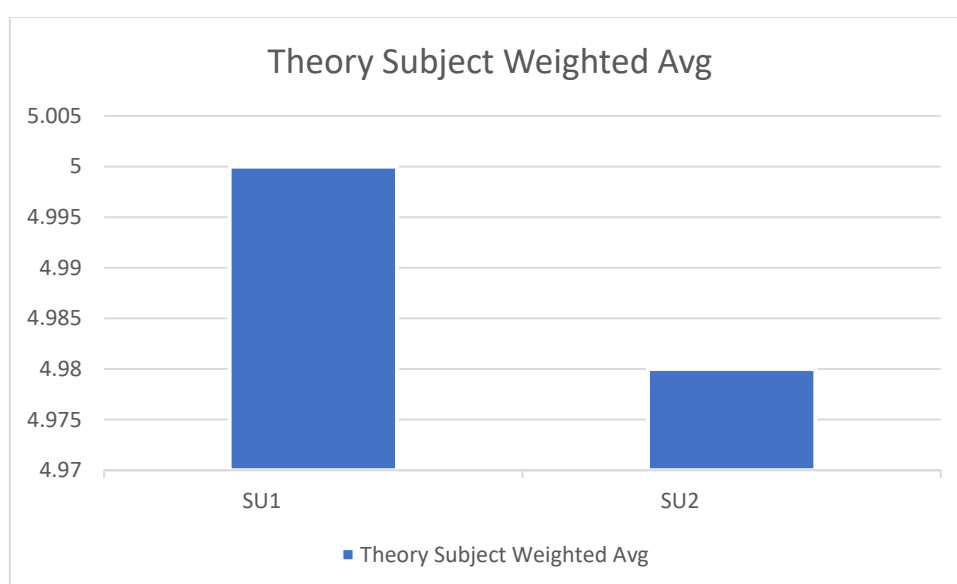

---

*The average ratings for theory sessions range from 4.71 to 4.91, indicating a high level of satisfaction. Practical sessions also received positive ratings, with averages ranging from 4.60 to 4.91. The Head of School (HOS) has been informed about the positive feedback, underlining the importance of maintaining and further enhancing the quality of teaching and learning for an enriched academic experience.*

---

**Consolidated Data January-July 2022-2023:**

Sr. No.	Faculty members Code	Theory Subject
		Weighted Average
1	SU1	5.00
2	SU2	4.98

**JANUARY-JULY****Figure-4.3-Graph Showing Student Feedback Teaching-Learning Process**

*The average ratings for these subjects range from 4.98 to a perfect 5.00, illustrating outstanding teaching quality and engagement. The Head of School (HOS) has been informed about the exceptionally positive feedback.*



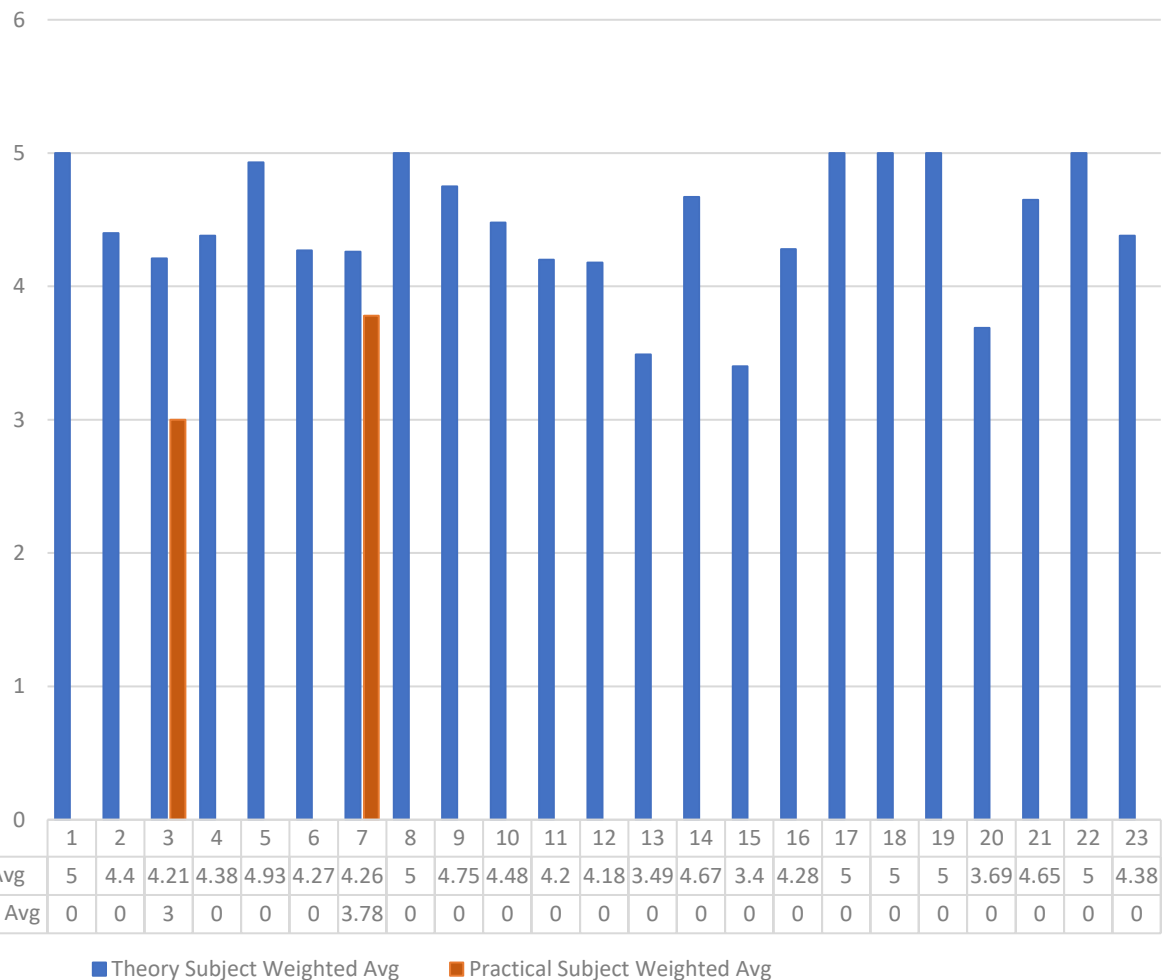
**FACULTY MEMBERS OF FMS & CHITRKOOT SCHOOL,  
YOGA, HM, LAW-**

**Chitrakoot School of Liberal Arts-**

**Consolidated Data August-December 2022-2023:**

Sr. No.	Faculty members Code	Theory Subject	Practical Subject
		Weighted Average	Weighted Average
1	SU1	5.00	-
2	SU2	4.40	-
3	SU3	4.21	3.00
4	SU4	4.38	-
5	SU5	4.93	-
6	SU6	4.27	-
7	SU7	4.26	3.78
8	SU8	5.00	-
9	SU9	4.75	-
10	SU10	4.48	-
11	SU11	4.20	-
12	SU12	4.18	-
13	SU13	3.49	-
14	SU14	4.67	-
15	SU15	3.40	-
16	SU16	4.28	-
17	SU17	5.00	-
18	SU18	5.00	-
19	SU19	5.00	-
20	SU20	3.69	-
21	SU21	4.65	-
22	SU22	5.00	-
23	SU23	4.38	-

## FEEDBACK AUGUST-DECEMBER

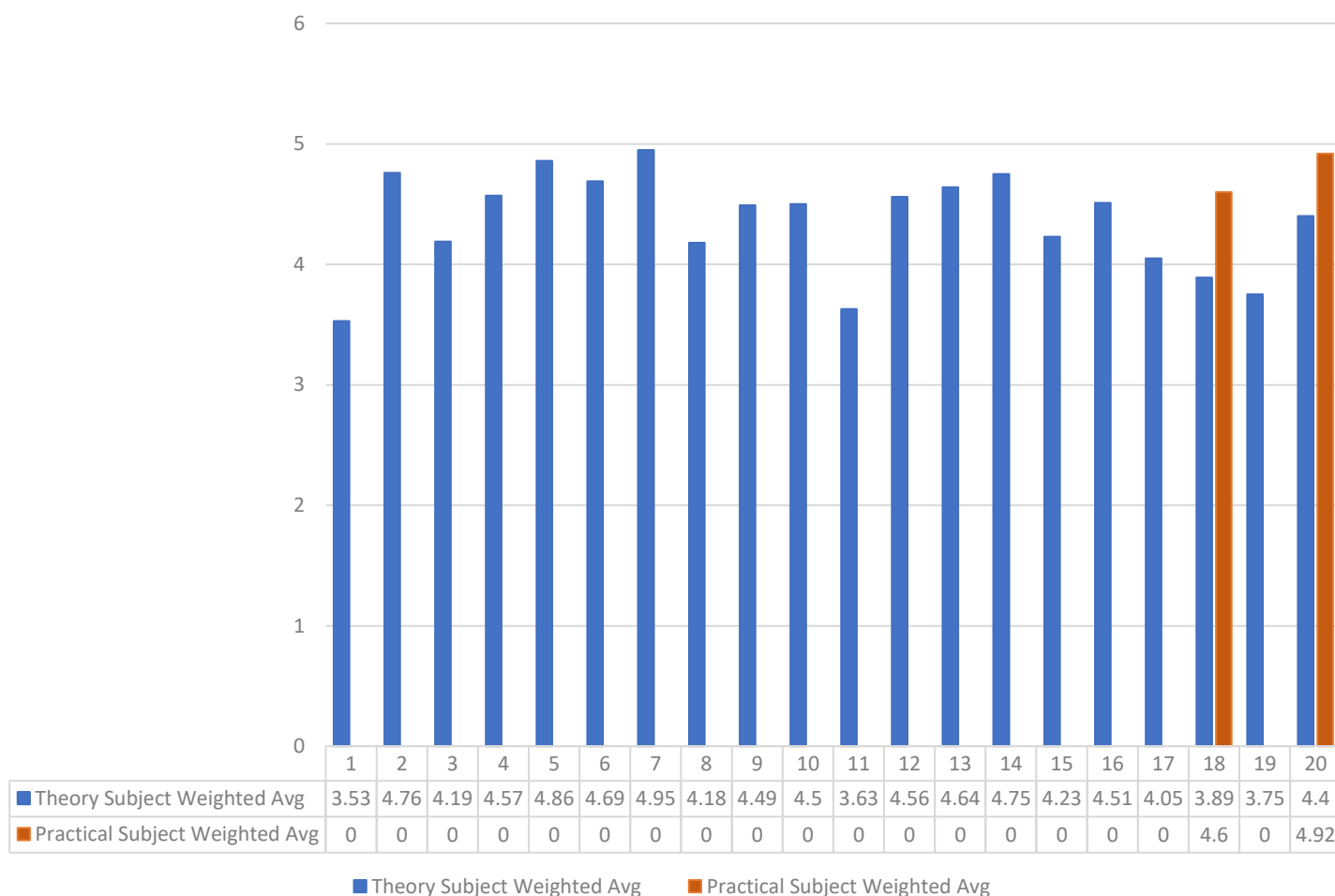
**AUGUST-DECEMBER**

*In Theory Subject, the average ratings vary from 3.4 to 5, with an overall average of approximately 4.34. In practical subjects, the average ratings range from 3 to 3.78, with an overall average of around 3.67. However, faculty members getting lower average scores were informed by the concerned HOS.*

**Consolidated Data January-July 2022-2023:**

Sr. No.	Faculty members Code	Theory Subject	Practical Subject
		Weighted Average	Weighted Average
1	SU1	3.53	-
2	SU2	4.76	-
3	SU3	4.19	-
4	SU4	4.57	-
5	SU5	4.86	-
6	SU6	4.69	-
7	SU7	4.95	-
8	SU8	4.18	-
9	SU9	4.49	-
10	SU10	4.50	-
11	SU11	3.63	-
12	SU12	4.56	-
13	SU13	4.64	-
14	SU14	4.75	-
15	SU15	4.23	-
16	SU16	4.51	-
17	SU17	4.05	-
18	SU18	3.89	4.60
19	SU19	3.75	-
20	SU20	4.40	4.92

## FEEDBACK JANUARY TO JULY

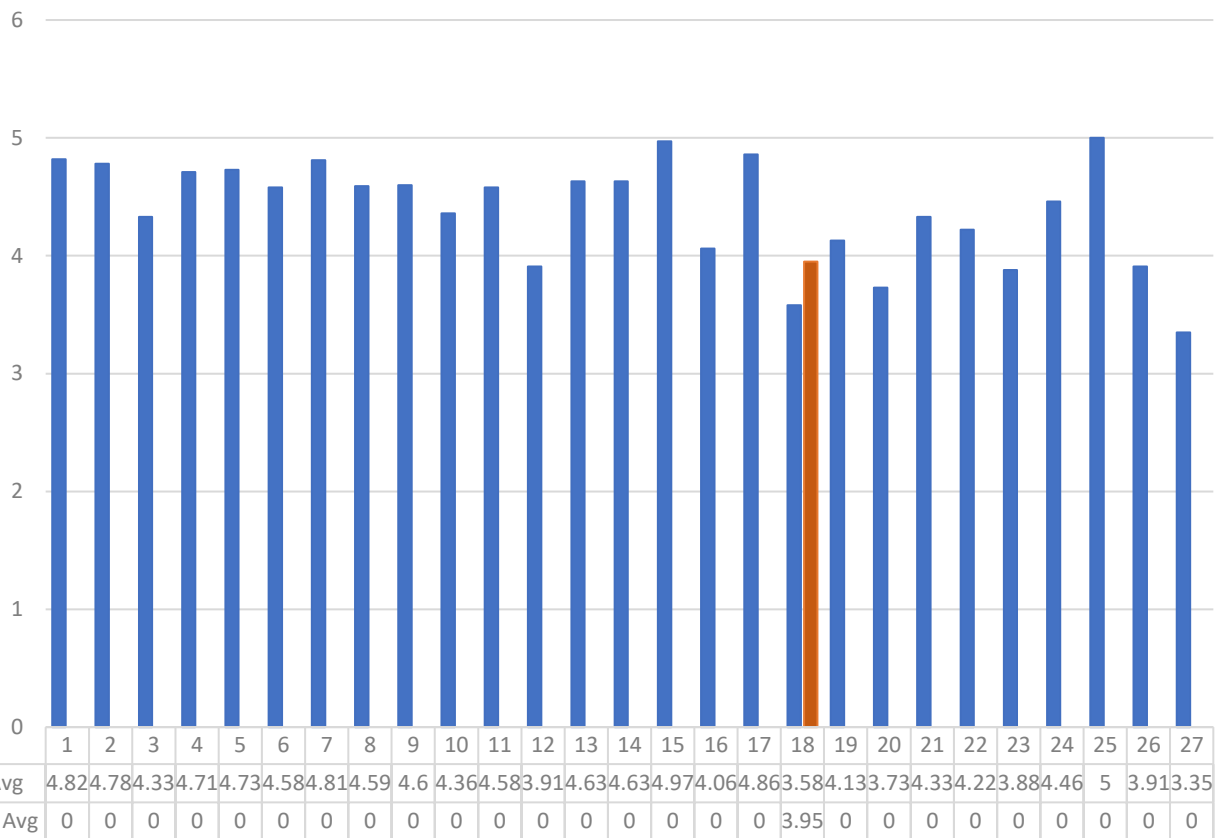
**JANUARY-JULY****Figure-5.1-Graph Showing Student Feedback Teaching-Learning Process.**

*The average ratings for Theory Subject sessions range from 3.53 to 4.76, indicating varying levels of satisfaction. Practical sessions received limited feedback, but ratings range from 4.60 to 4.92, suggesting positive feedback for those faculties. The HOS has been informed about the feedback, emphasizing the need to focus on improving Theory Subject sessions and maintaining the positive subject of practical sessions.*

**School of Management Sciences-****Consolidated Data August-December 2022-2023:**

Sr. No.	Faculty members Code	Theory Subject	Practical Subject
		Weighted Average	Weighted Average
1	SU1	4.82	-
2	SU2	4.78	-
3	SU3	4.33	-
4	SU4	4.71	-
5	SU5	4.73	-
6	SU6	4.58	-
7	SU7	4.81	-
8	SU8	4.59	-
9	SU9	4.60	-
10	SU10	4.36	-
11	SU11	4.58	-
12	SU12	3.91	-
13	SU13	4.63	-
14	SU14	4.63	-
15	SU15	4.97	-
16	SU16	4.06	-
17	SU17	4.86	-
18	SU18	3.58	3.95
19	SU19	4.13	-
20	SU20	3.73	-
21	SU21	4.33	-
22	SU22	4.22	-
23	SU23	3.88	-
24	SU24	4.46	-
25	SU25	5.00	-
26	SU26	3.91	-
27	SU27	3.35	-

## FEEDBACK AUGUST-DECEMBER



■ Theory Subject Weighted Avg    ■ Practical Subject Weighted Avg

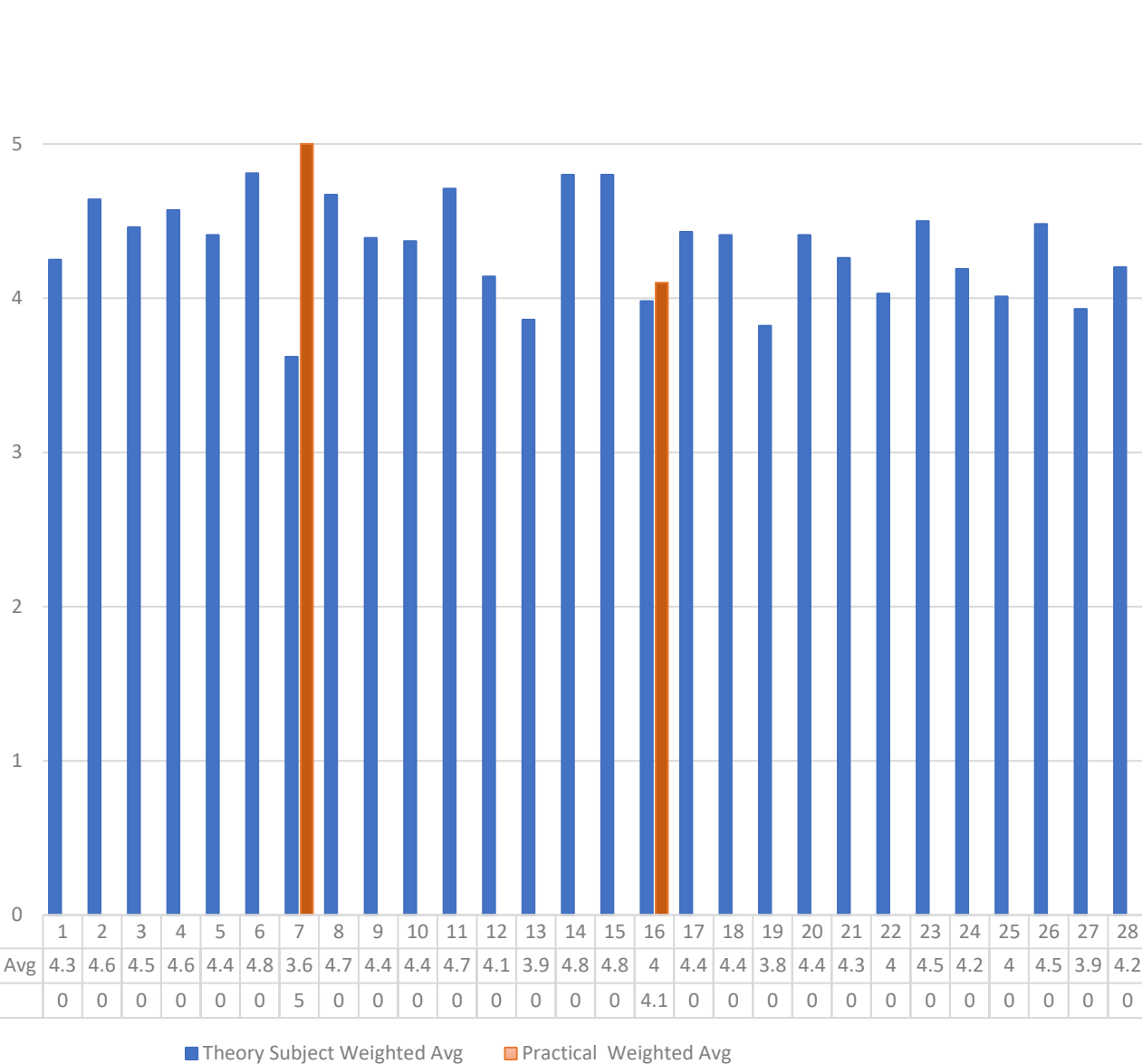
**AUGUST-DECEMBER**

*In Theory Subject, the average ratings range from 3.35 to 5.00, with an overall average of approximately 4.53. This indicates a generally high level of satisfaction among students for various subjects. It's worth noting that feedback has been shared with the respective Heads of Departments (HOS) to address any concerns or areas for improvement potentially.*

**Consolidated Data January-July 2022-2023:**

Sr. No.	Faculty members Code	Theory Subject	Practical
		Weighted Average	Weighted Average
1	SU1	4.25	-
2	SU2	4.64	-
3	SU3	4.46	-
4	SU4	4.57	-
5	SU5	4.41	-
6	SU6	4.81	-
7	SU7	3.62	5.00
8	SU8	4.67	-
9	SU9	4.39	-
10	SU10	4.37	-
11	SU11	4.71	-
12	SU12	4.14	-
13	SU13	3.86	-
14	SU14	4.80	-
15	SU15	4.80	-
16	SU16	3.98	4.10
17	SU17	4.43	-
18	SU18	4.41	-
19	SU19	3.82	-
20	SU20	4.41	-
21	SU21	4.26	-
22	SU22	4.03	-
23	SU23	4.50	-
24	SU24	4.19	-
25	SU25	4.01	-
26	SU26	4.48	-
27	SU27	3.93	-
28	SU28	4.20	-

## FEEDBACK JANUARY TO JULY

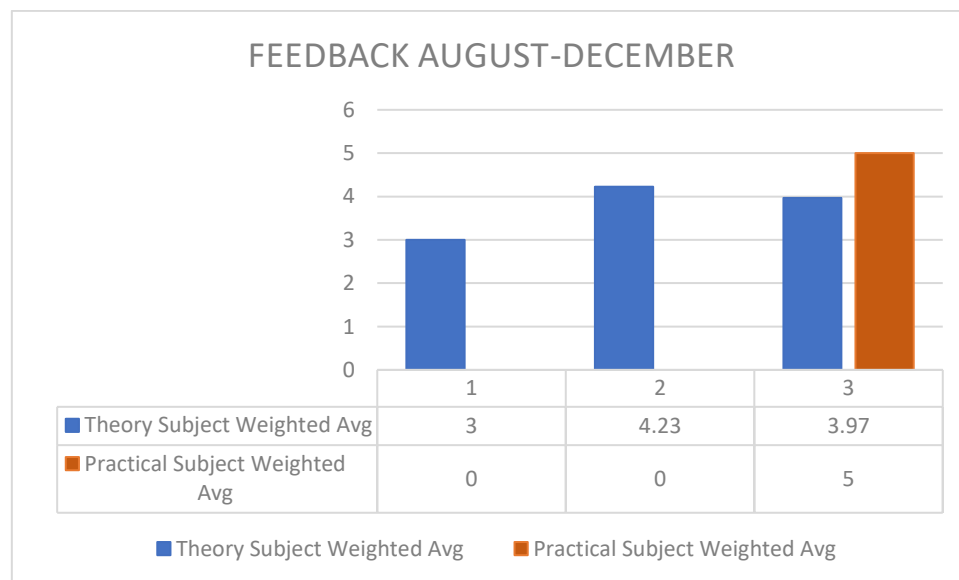
**JANUARY-JULY****Figure 5.2-Graph Showing Student Feedback Teaching-Learning Process.**

*Theory Subject sessions received average ratings ranging from 3.62 to 4.81, reflecting varying levels of satisfaction. Practical sessions, where feedback was available, received positive ratings, with an average ranging from 4.10 to 5.00. The Head of School (HOS) has been informed about the feedback, emphasizing the need to focus on enhancing Theory Subject sessions and continuing to maintain the positive view of practical experience*



**School of Hospitality and Hotel Administration-****Consolidated Data August-December 2022-2023:**

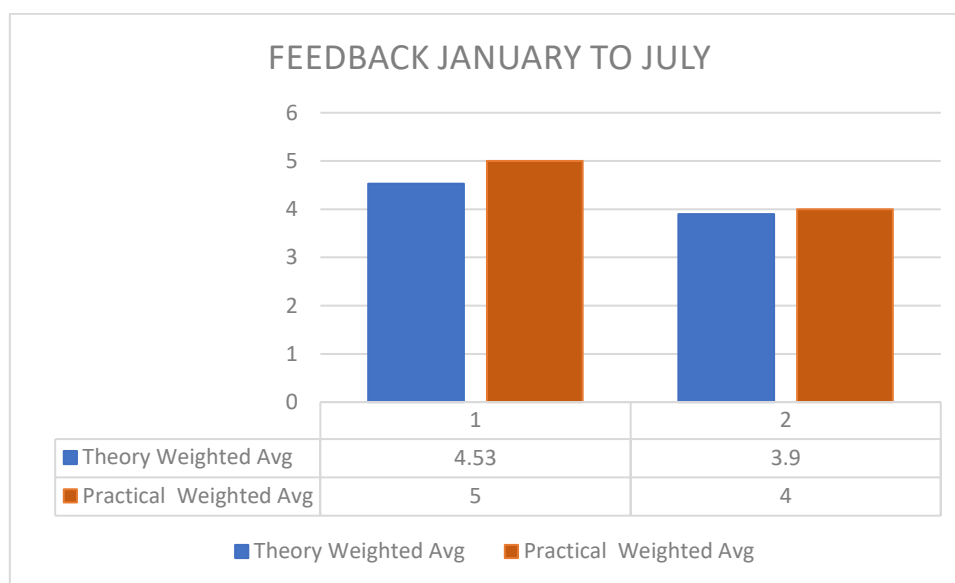
Sr. No.	Faculty members Code	Theory Subject	Practical Subject
		Weighted Average	Weighted Average
1	SU1	3.00	-
2	SU2	4.23	-
3	SU3	3.97	5

**AUGUST-DECEMBER**

*In Theory Subject, the average ratings range from 3.00 to 4.23, with an overall average of approximately 3.73. In practical subjects, the available data shows an average rating of 5.00 for one faculty members member and an overall average of approximately 4.32, indicating a higher level of satisfaction in this domain. Note that feedback has been communicated to the respective Heads of Departments (HOS).*

**Consolidated Data January-July 2022-2023:**

Sr. No.	Faculty members Code	Theory	Practical
		Weighted Average	Weighted Average
1	SU1	4.53	5.00
2	SU2	3.90	4.00

**JANUARY-JULY****FIGURE 5.3- Graph Showing Student's Feedback on The Teaching-Learning Process**

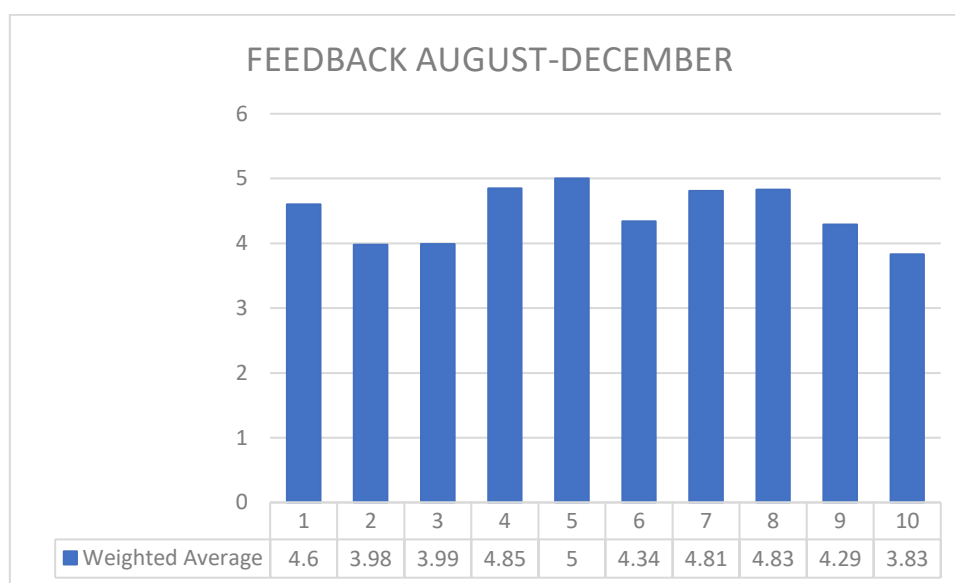

---

*For theory, average ratings ranged from 3.90 to 4.53, indicating a moderate level of satisfaction. Practical sessions received positive feedback, with average ratings ranging from 4.00 to 5.00. The Head of School (HOS) has been informed about the feedback, underscoring the importance of addressing areas for improvement in theory sessions and maintaining the positive subject of practical sessions to enhance the learning experience.*

---

**School of Law****Consolidated Data August-December 2022-2023:**

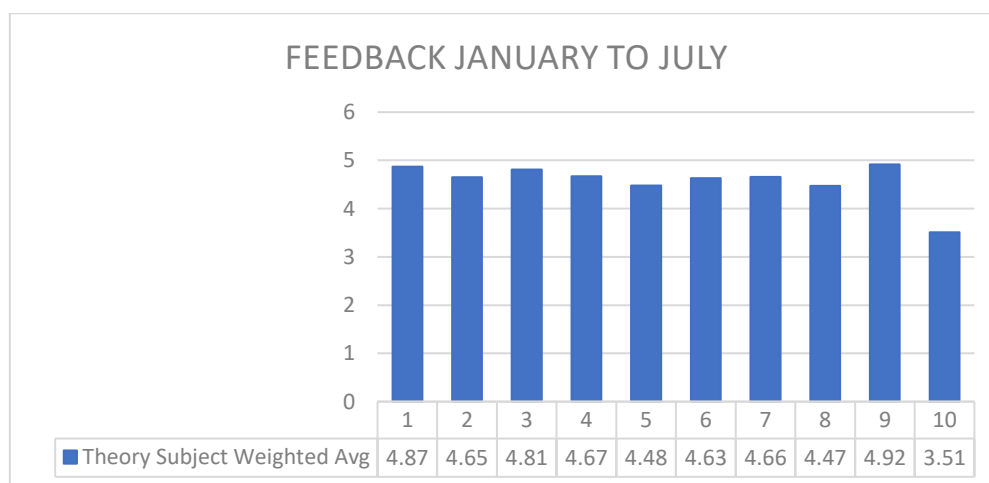
Sr. No.	Faculty members Code	Weighted Average
1	SU4	4.60
2	SU5	3.98
3	SU6	3.99
4	SU7	4.85
5	SU8	5.00
6	SU9	4.34
7	SU10	4.81
8	SU11	4.83
9	SU12	4.29
10	SU13	3.83



*Among the faculty members, the number of votes varies, ranging from 4 to 39. The average ratings also show some variation, ranging from 3.83 to a perfect score of 5.00. These ratings indicate different levels of satisfaction among students for their respective instructors with the additional note that feedback has been communicated to the respective Heads of Departments (HOS).*

**Consolidated Data January-July 2022-2023:**

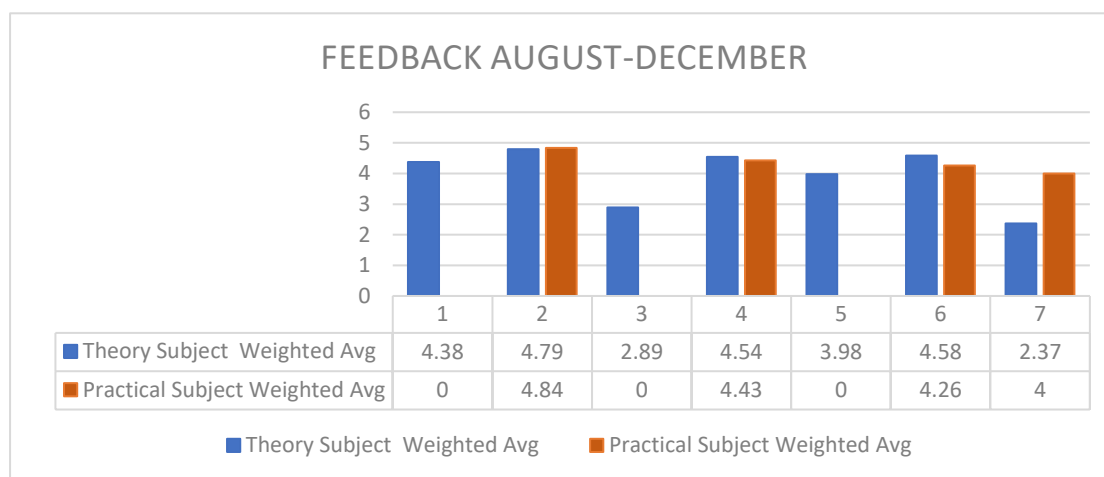
Sr. No.	Faculty members Code	Theory Subject
		Weighted Average
1	SU1	4.87
2	SU2	4.65
3	SU3	4.81
4	SU4	4.67
5	SU5	4.48
6	SU6	4.63
7	SU7	4.66
8	SU8	4.47
9	SU9	4.92
10	SU10	3.51

**JANUARY-JULY****Figure-5.4-Graph Showing Student Feedback Teaching-Learning Process**

*The average ratings for theory sessions range from 3.51 to 4.92. The Head of School (HOS) has been informed about the positive feedback, recognizing the exceptional teaching abilities of the faculty members and their contributions to the overall academic experience, and promoting a strong and engaging learning environment.*

**School of Yogic Science-****Consolidated Data August-December 2022-2023:**

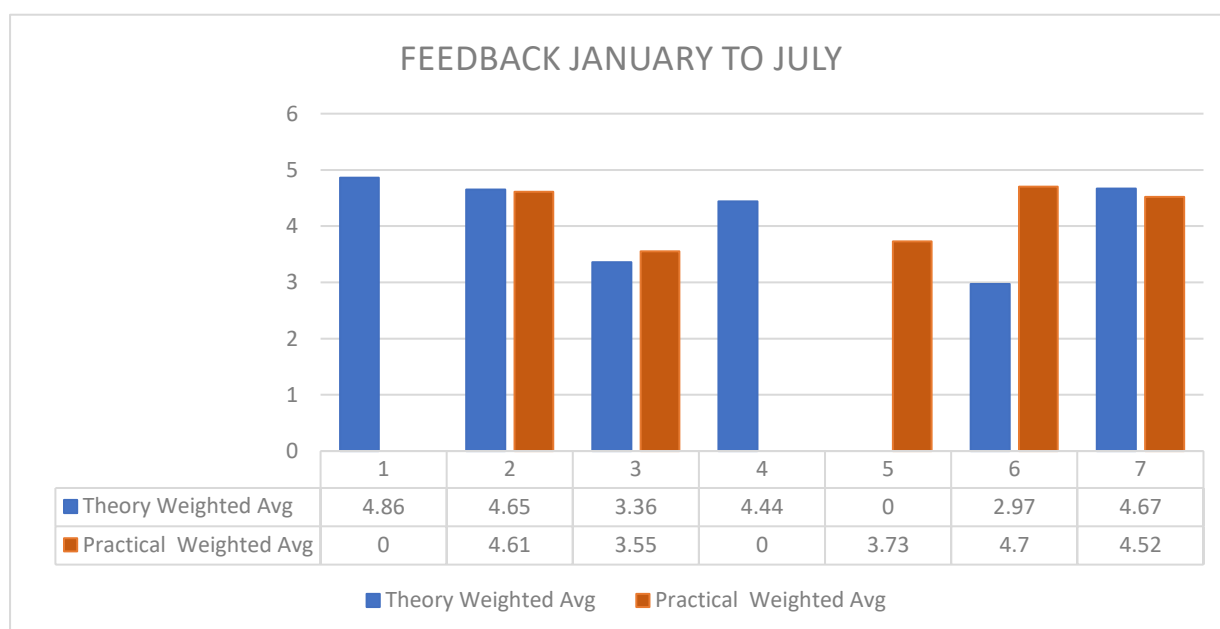
Sr. No.	Faculty members Code	Theory Subject	Practical Subject
		Weighted Average	Weighted Average
1	SU1	4.38	-
2	SU2	4.79	4.84
3	SU3	2.89	-
4	SU4	4.54	4.43
5	SU5	3.98	-
6	SU6	4.58	4.26
7	SU7	2.37	4.00

**AUGUST-DECEMBER**

*In Theory Subject, the average ratings vary widely, ranging from 2.37 to 4.79, with an overall average of approximately 3.63. These ratings indicate a significant variance in the quality of instruction, in practical subjects, the average ratings range from 4.00 to 4.84, with the additional note that feedback has been shared with the respective Heads of Departments (HOS).*

**Consolidated Data January-July 2022-2023:**

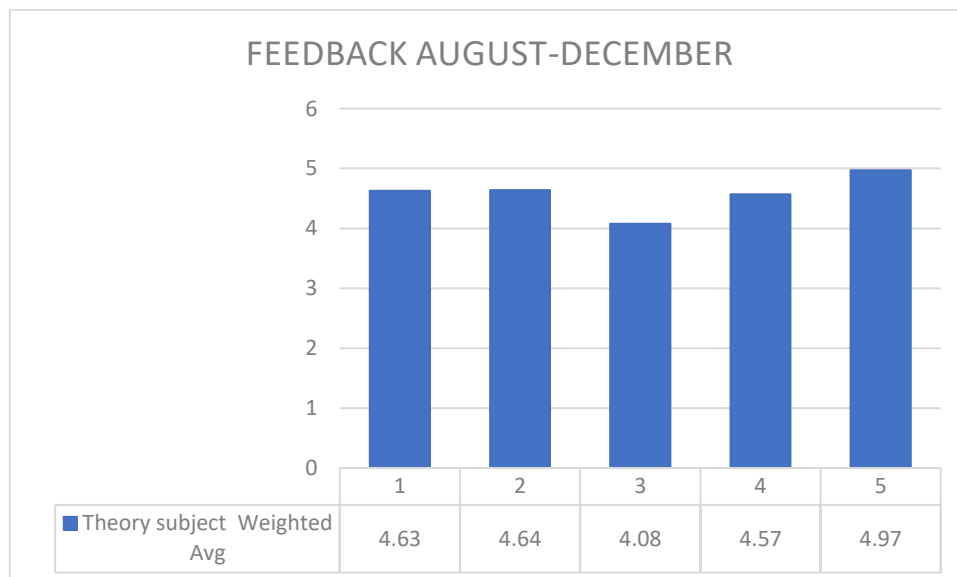
Sr. No.	Faculty members Code	Theory	Practical
		Weighted Average	Weighted Average
1	SU1	4.86	-
2	SU2	4.65	4.61
3	SU3	3.36	3.55
4	SU4	4.44	-
5	SU5	-	3.73
6	SU6	2.97	4.70
7	SU7	4.67	4.52

**JANUARY-JULY****Figure-5.5-Graph Showing Student Feedback Teaching-Learning Process**

*In theory sessions, average ratings range from 2.97 to 4.86, indicating a varied level of satisfaction. Practical sessions received average ratings ranging from 3.55 to 4.70. The Head of School (HOS) has been informed about the feedback, emphasizing the need for enhancing theory sessions and maintaining the positive subject of practical sessions to ensure a more consistent and improved educational experience for the students.*

**School of Journalism & Mass Communication****Consolidated Data August-December 2022-2023:**

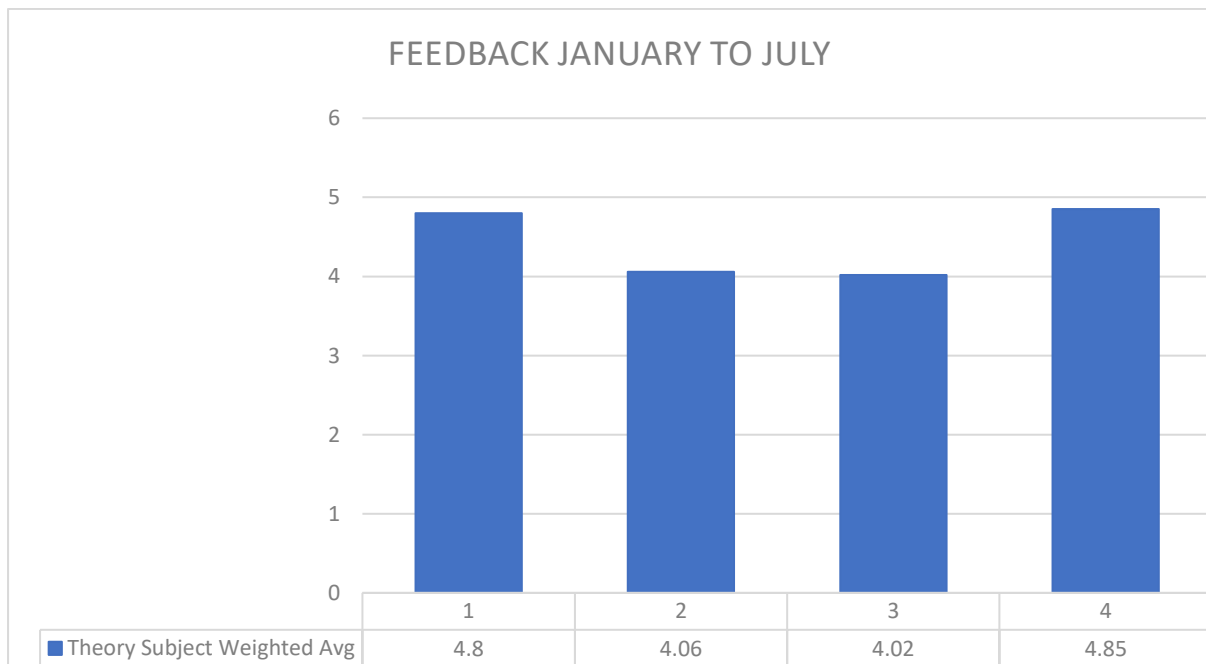
<b>Sr. No.</b>	<b>Faculty members Code</b>	<b>Theory subject Weighted Average</b>
<b>1</b>	<b>SU1</b>	<b>4.63</b>
<b>2</b>	<b>SU2</b>	<b>4.64</b>
<b>3</b>	<b>SU3</b>	<b>4.08</b>
<b>4</b>	<b>SU4</b>	<b>4.57</b>
<b>5</b>	<b>SU5</b>	<b>4.97</b>

**AUGUST-DECEMBER**

Among the faculty members, the number of votes varies from 6 to 11, indicating different levels of student participation in the feedback process. The weighted average ratings range from 4.08 to 4.97, with an overall average of approximately 4.58. Note that feedback has been communicated to the respective Heads of Departments (HOS).

**Consolidated Data January-July 2022-2023:**

Sr. No.	Faculty members Code	Theory Subject
		Weighted Average
1	SU1	4.80
2	SU2	4.06
3	SU3	4.02
4	SU4	4.85



**JANUARY-JULY**

**Figure-5.6-Graph Showing Student Feedback Teaching-Learning Process**



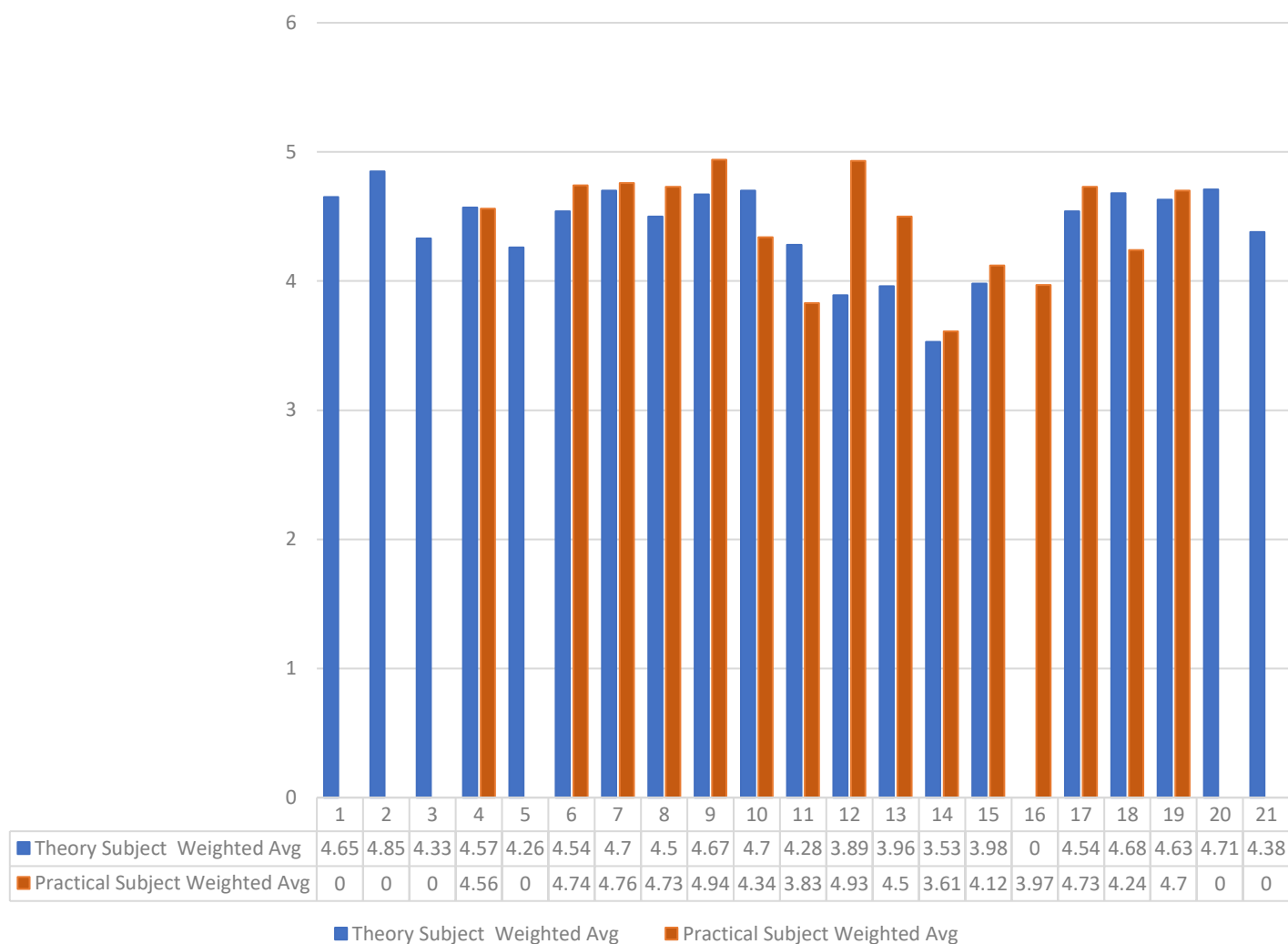
The average ratings range from 4.02 to 4.85, indicating a generally high level of satisfaction with the subjects. The Head of School (HOS) has been informed about the feedback, emphasizing the importance of maintaining the quality of these subjects and recognizing the positive impact they have on the overall academic environment, promoting continued success and engagement among the students.

## **FACULTY MEMBERS OF PHARMACEUTICAL SCIENCES**

### **Consolidated Data August-December 2022-2023:**

Sr. No.	Faculty members Code	Theory Subject	Practical Subject
		Weighted Average	Weighted Average
1	SU1	4.65	-
2	SU2	4.85	-
3	SU3	4.33	-
4	SU4	4.57	4.56
5	SU5	4.26	-
6	SU6	4.54	4.74
7	SU7	4.70	4.76
8	SU8	4.50	4.73
9	SU9	4.67	4.94
10	SU10	4.70	4.34
11	SU11	4.28	3.83
12	SU12	3.89	4.93
13	SU13	3.96	4.50
14	SU14	3.53	3.61
15	SU15	3.98	4.12
16	SU16	-	3.97
17	SU17	4.54	4.73
18	SU18	4.68	4.24
19	SU19	4.63	4.70
20	SU20	4.71	-
21	SU21	4.38	--

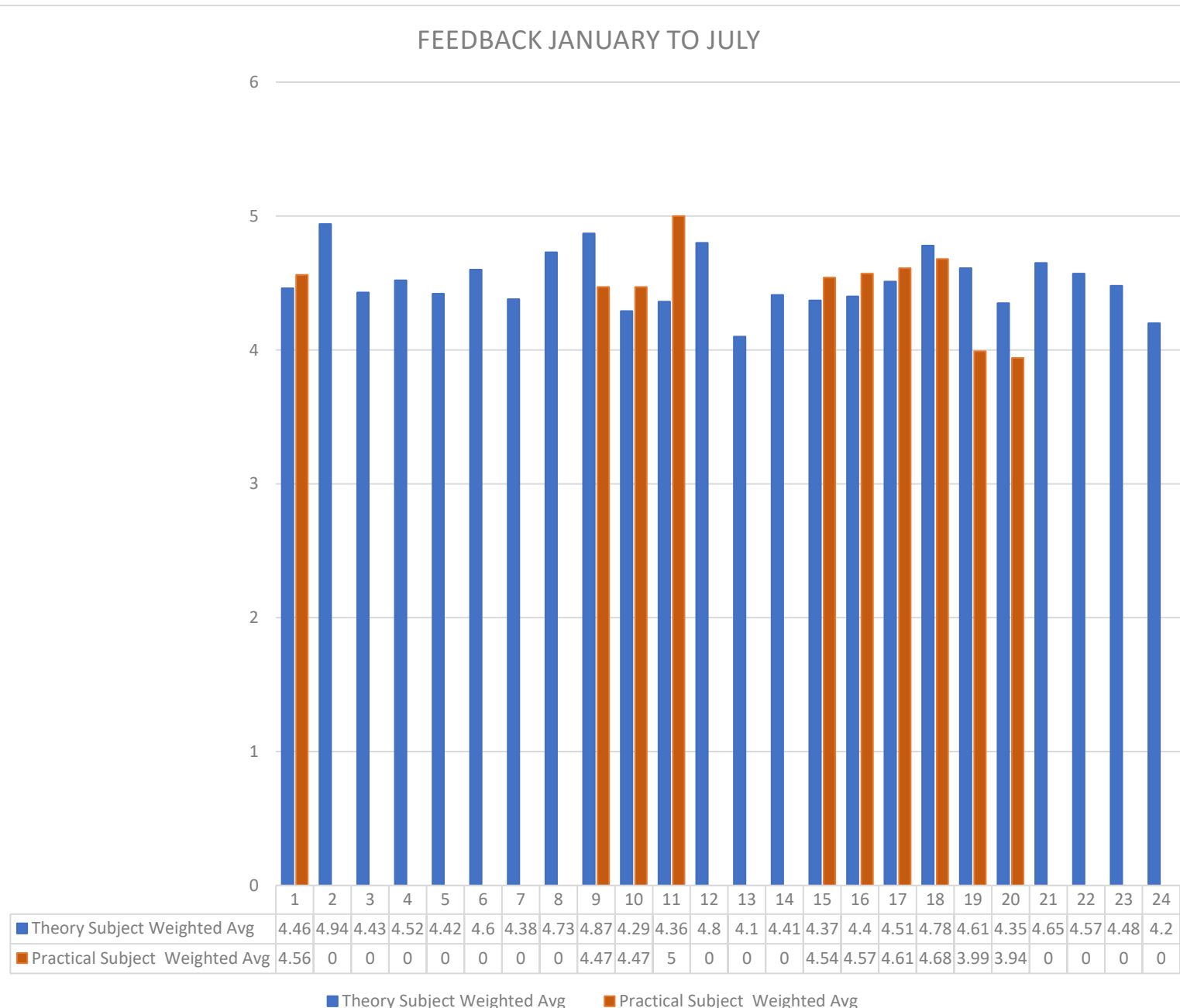
## FEEDBACK AUGUST-DECEMBER

**AUGUST-DECEMBER**

*In Theory Subject, the average ratings range from 3.53 to 4.85, with an overall average of approximately 4.37. In practical subjects, the average ratings vary from 3.61 to 4.94, with an overall average of around 4.42. Feedback was shared with the HOS for continuous improvement and to ensure the quality of education provided to students.*

**Consolidated Data January-July 2022-2023:**

Sr. No.	Faculty members Code	Theory Subject	Practical Subject
		Weighted Average	Weighted Average
1	SU1	4.46	4.56
2	SU2	4.94	-
3	SU3	4.43	-
4	SU4	4.52	-
5	SU5	4.42	-
6	SU6	4.60	-
7	SU7	4.38	-
8	SU8	4.73	-
9	SU9	4.87	4.47
10	SU10	4.29	4.47
11	SU11	4.36	5.00
12	SU12	4.80	-
13	SU13	4.10	-
14	SU14	4.41	-
15	SU15	4.37	4.54
16	SU16	4.40	4.57
17	SU17	4.51	4.61
18	SU18	4.78	4.68
19	SU19	4.61	3.99
20	SU20	4.35	3.94
21	SU21	4.65	-
22	SU22	4.57	-
23	SU23	4.48	-
24	SU24	4.20	-



### JANUARY-JULY

**Figure-6.1-Graph Showing Student Feedback Teaching-Learning Process**

*The average ratings for theory subjects range from 4.10 to 4.94, reflecting a generally high level of satisfaction. Practical subjects also received positive ratings, ranging from 3.94 to 5.00, emphasizing effective teaching and engagement. The Head of School (HOS) has been informed about the feedback, underscoring the importance of maintaining high-quality education for both theory and practical subjects and recognizing the positive impact they have on the overall academic experience.*

## **Analysis Of Student Feedback on The Teaching-Learning Process Faculty Members-Wise-**

*Structured Feedback received from Students and a Review of the Teaching-learning process were analyzed and it was observed that most of the faculty members got a score above 4, which means most of the students were satisfied. Based on the recommendation of regulatory bodies and Feedback from Teachers and Students, nearly 20% to 80% of the syllabi of various courses will be updated to make our students industry-ready.*

## **FEEDBACK FROM MANTHAN 2022-2023-**

The evaluation of university infrastructure is facilitated by the utilization of an online educational platform known as LMS eUniv. This platform serves as a comprehensive repository for a diverse range of online educational materials. The assessment process takes place after each academic term, typically occurring in December and July. During these periods, students are requested to provide their valuable feedback through a structured course exit feedback form.

The feedback collected is structured around five fundamental subjects:

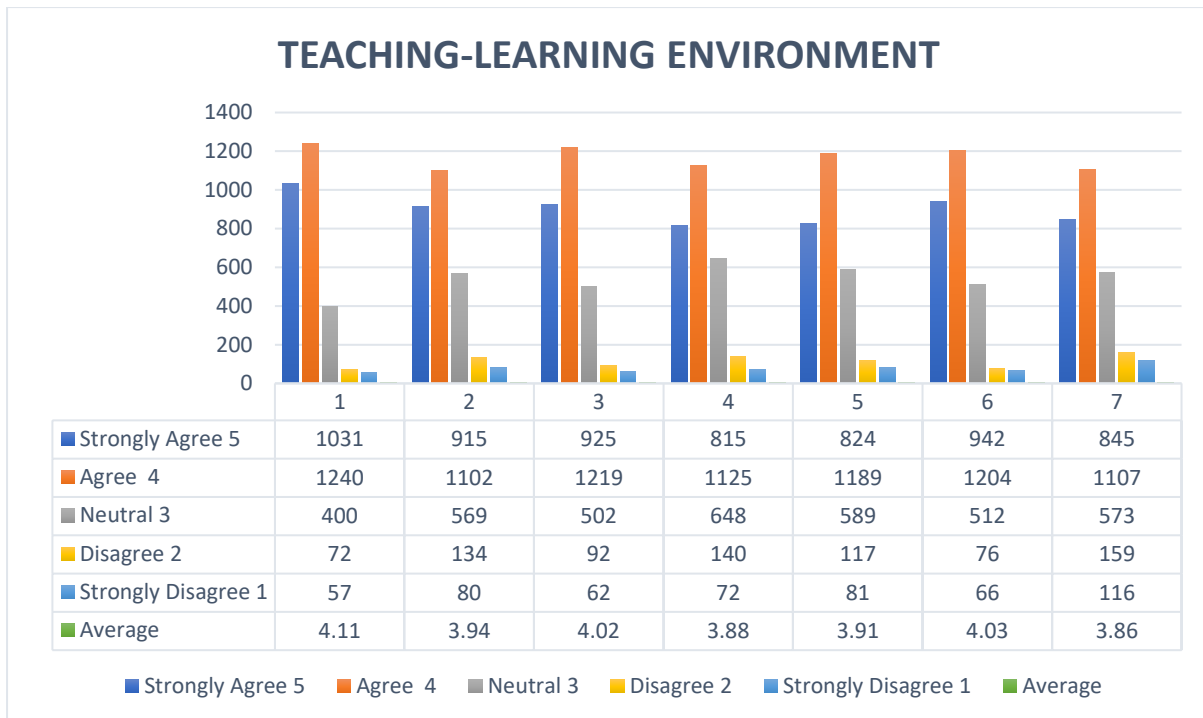
1. Teaching Learning Environment: This pertains to the quality of teaching methods, classroom interaction, and the overall ambiance for effective learning.
2. Student Support and Administration: This dimension addresses the responsiveness of the administrative and support staff, including their assistance in addressing student queries and concerns.
3. Curricular and Co-Curricular: This point focuses on the relevance and comprehensiveness of the academic curriculum, as well as the availability and effectiveness of co-curricular activities.
4. Online Teaching / IT Infrastructure: In the digital age, the efficacy of online teaching methods and the reliability of the IT infrastructure play a critical role in the learning experience.
5. Evaluation and Examination System: This aspect covers the fairness, transparency, and appropriateness of the evaluation and examination processes.

The gathered feedback enables continuous improvement by highlighting areas of strength and areas needing enhancement. By incorporating student perspectives, the University can refine its infrastructure and policies, fostering an enriched educational experience for all stakeholders involved. Through the iterative feedback mechanism, LMS eUniv aids in sculpting an educational environment that aligns with the evolving needs of modern learners.

**Teaching Learning Environment-****CRITERIA-**

Teachers are regular and punctual in taking their classes.
Teachers are masters in their subjects.
Teachers are well prepared and organized in the class.
Lectures delivered by teachers are engaging and interesting.
Teachers adjust the pace of the class to the student's level of understanding.
Teachers effectively encourage students to ask questions and give answers.
Diverse Teaching-learning like group discussion, class discussion, and use of audio-visual aids, games, case studies, etc. are adopted to achieve intended learning outcomes.

Strongly Agree	Agree	Neutral	Disagree	Strongly Disagree	Average	SATISFIED	UNSATISFIED %
						%	
5	4	3	2	1			
1031	1240	400	72	57	4.11	81%	5%
915	1102	569	134	80	3.94	72%	8%
925	1219	502	92	62	4.02	77%	6%
815	1125	648	140	72	3.88	69%	8%
824	1189	589	117	81	3.91	72%	7%
942	1204	512	76	66	4.03	77%	5%
845	1107	573	159	116	3.86	70%	10%



*The average ratings range from 3.86 to 4.11, indicating a generally positive perception of the service. The majority of respondents fall into the Satisfied category, with Percentages ranging from 69% to 81%. Conversely, Unsatisfied Percentages range from 5% to 10%. Overall, the data reflects a mostly favorable sentiment, with a slight variation in satisfaction levels among different respondents. Continuous efforts to address areas of dissatisfaction can further enhance overall satisfaction levels.*

### **Student Support and Administration-**

#### **CRITERIA-**

**University staff/ faculty members treat students with dignity.**

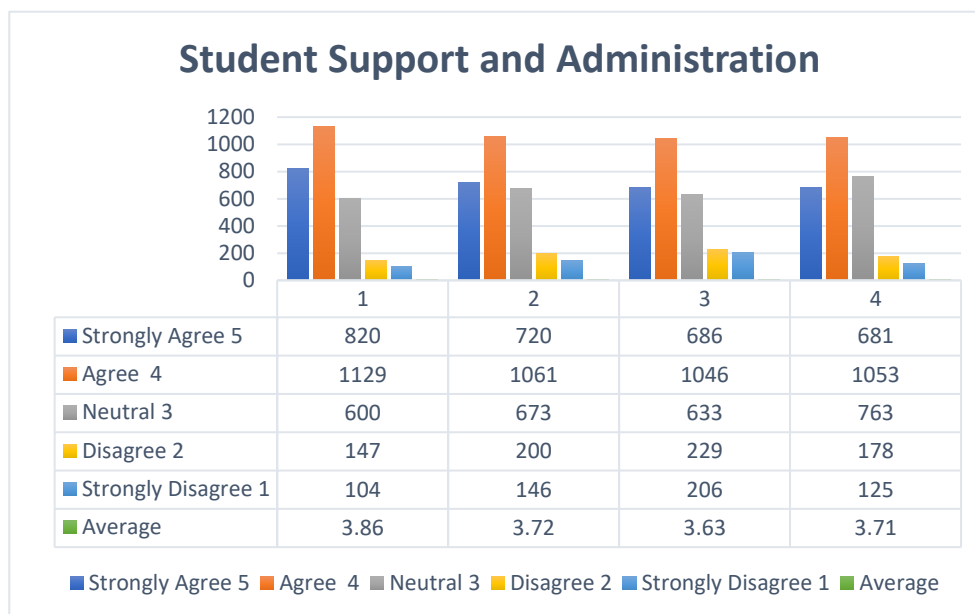
**Administrative processes (registration and other official tasks) are convenient and fast.**

**All the important announcements and notifications concerning students are communicated well in advance.**

**Different counseling and grievance cells available for students are working efficiently.**



Strongly Agree	Agree	Neutral	Disagree	Strongly Disagree	Average	SATISFIED	UNSATISFIED %
						%	
5	4	3	2	1			
820	1129	600	147	104	3.86	70%	9%
720	1061	673	200	146	3.72	64%	12%
686	1046	633	229	206	3.63	62%	16%
681	1053	763	178	125	3.71	62%	11%



The average ratings range from 3.63 to 3.86, indicating a generally moderate to positive perception of the service. However, satisfaction levels vary, with the Satisfied Percentages ranging from 62% to 70%, while Unsatisfied Percentages range from 9% to 16%. While the majority falls within the Satisfied category, there is room for improvement to address areas of dissatisfaction. Continuous efforts to enhance the service can lead to increased overall satisfaction among respondents.

### Curricular and Co-Curricular

#### CRITERIA-

**The courses taught are up-to-date and not outdated.**

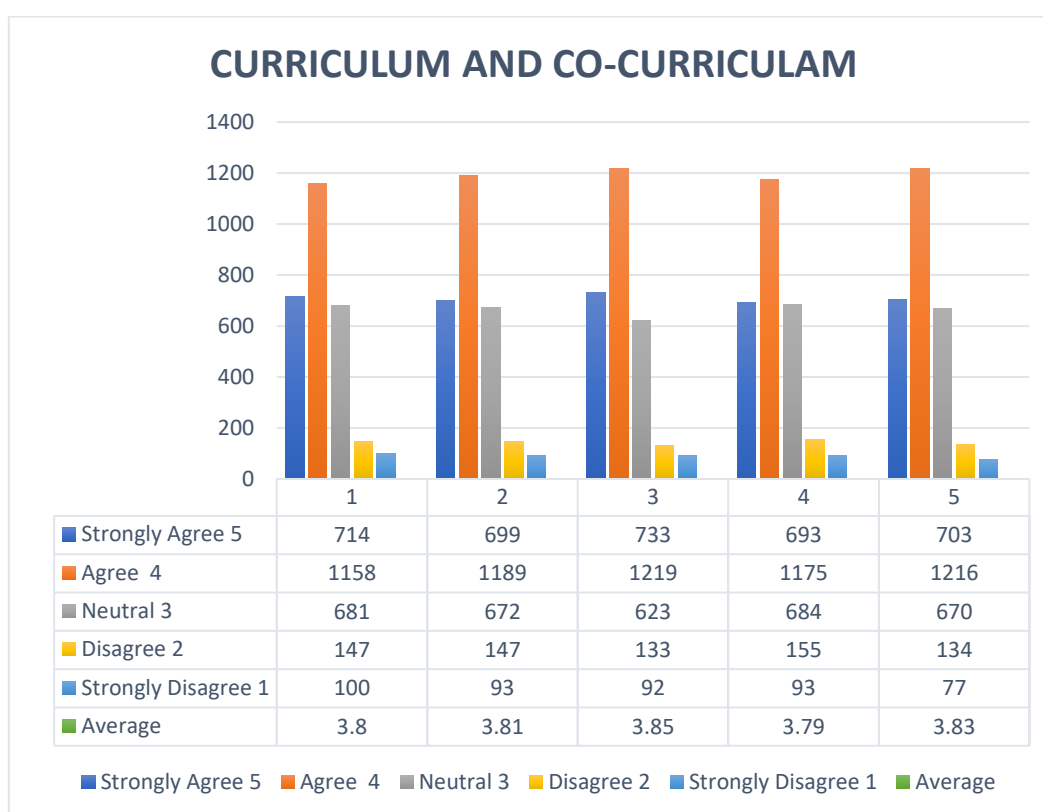
**Courses taught are adding to academic as well as overall development.**

**Co-curriculum programs (Sprint, workshops, guest lectures, Guru series, etc.) are conducted often which add extra knowledge and skills.**

**Personality development programs/ courses are beneficial and effective.**

**The curriculum is effective in enhancing constructive learning**

Strongly Agree	Agree	Neutral	Disagree	Strongly Disagree	Average	SATISFIED	UNSATISFIED
						%	%
5	4	3	2	1			
714	1158	681	147	100	3.8	67%	9%
699	1189	672	147	93	3.81	67%	9%
733	1219	623	133	92	3.85	70%	8%
693	1175	684	155	93	3.79	67%	9%
703	1216	670	134	77	3.83	69%	8%



### **Graph showing student Feedback on Curricular and Co-Curricular in the university**

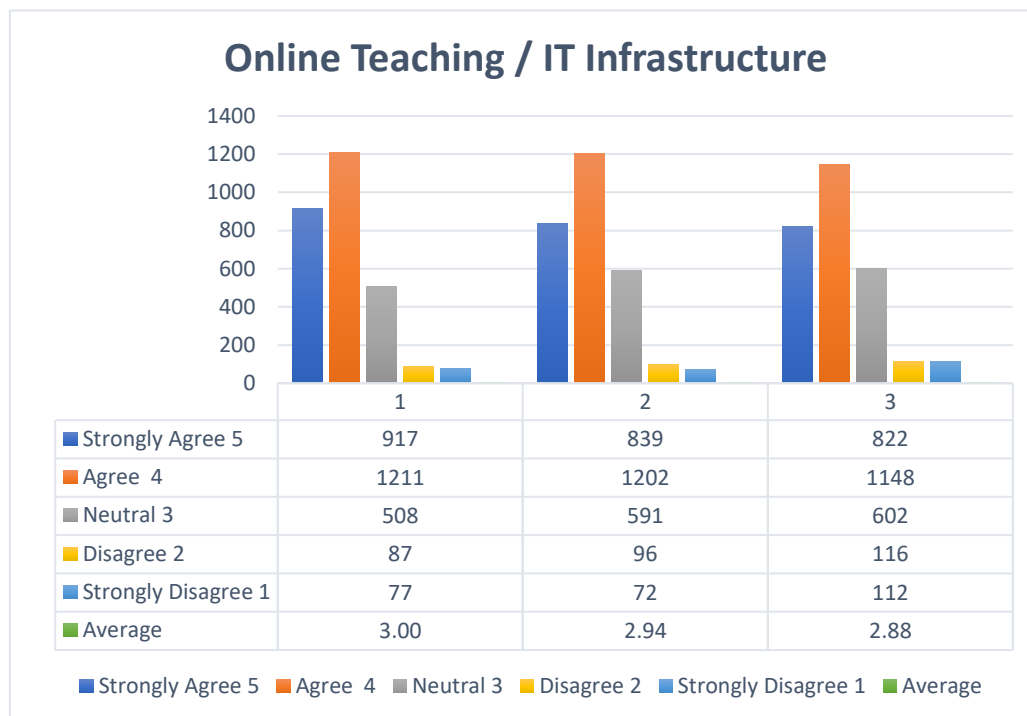
*The majority either agree or strongly agree with Curricular and Co-Curricular, comprising 67% to 70% of responses, reflecting satisfaction with the educational experience. Dissatisfaction is minimal, with only 8% to 9% expressing dissatisfaction. The average satisfaction ratings range from 3.79 to 3.85, affirming a generally content student body.*

**Infrastructure including Online Teaching / IT****CRITERIA-**

**My Shoolini's, new features like the timetable, navigating to the online class from it, datasheet display, exam dashboard, and DMC download, are helpful in terms of one roof solution for you.**

**eUniv (Learning Management System) is robust and very helpful in our academics.**

Strongly Agree	Agree	Neutral	Disagree	Strongly Disagree	Average	SATISFIED	UNSATISFIED %
						%	
5	4	3	2	1			
917	1211	508	87	77	3.00	76%	6%
839	1202	591	96	72	2.94	73%	6%
822	1148	602	116	112	2.88	70%	8%



**Graph showing student Feedback on Online Teaching/IT infrastructure**

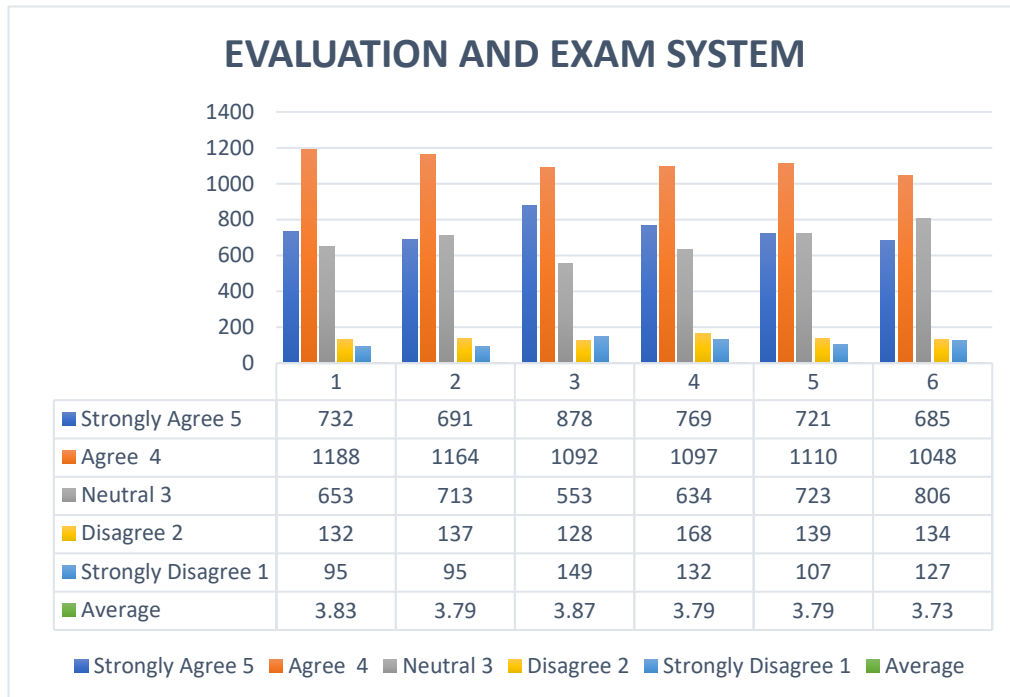
The average ratings in this dataset range from 2.88 to 3.00, indicating a generally moderate to lower level of satisfaction with the service. The majority of respondents fall within the Satisfied category, with satisfaction Percentages ranging from 70% to 76%. On the other hand, Unsatisfied Percentages range from 6% to 8%. Continuous efforts to address concerns can lead to more positive feedback in the future.

### **Evaluation and Examination System**

#### **CRITERIA-**

<b>Internal evaluation is fair and transparent.</b>
<b>The overall evaluation system is satisfactory.</b>
<b>Easy to fill revaluation and clear any other queries.</b>
<b>Examinations are conducted smoothly.</b>
<b>The reappear examination process is streamlined in terms of timely information and smooth conduct.</b>

<b>Strongly Agree</b>	<b>Agree</b>	<b>Neutral</b>	<b>Disagree</b>	<b>Strongly Disagree</b>	<b>Average</b>	<b>SATISFIED</b>	<b>UNSATISFIED</b>
						<b>%</b>	<b>%</b>
<b>5</b>	<b>4</b>	<b>3</b>	<b>2</b>	<b>1</b>			
<b>732</b>	<b>1188</b>	<b>653</b>	<b>132</b>	<b>95</b>	<b>3.83</b>	<b>69%</b>	<b>8%</b>
<b>691</b>	<b>1164</b>	<b>713</b>	<b>137</b>	<b>95</b>	<b>3.79</b>	<b>66%</b>	<b>8%</b>
<b>878</b>	<b>1092</b>	<b>553</b>	<b>128</b>	<b>149</b>	<b>3.87</b>	<b>70%</b>	<b>10%</b>
<b>769</b>	<b>1097</b>	<b>634</b>	<b>168</b>	<b>132</b>	<b>3.79</b>	<b>67%</b>	<b>11%</b>
<b>721</b>	<b>1110</b>	<b>723</b>	<b>139</b>	<b>107</b>	<b>3.79</b>	<b>65%</b>	<b>9%</b>
<b>685</b>	<b>1048</b>	<b>806</b>	<b>134</b>	<b>127</b>	<b>3.73</b>	<b>62%</b>	<b>9%</b>



**Graph showing students on Evaluation and Examination system.**

*The average ratings in this dataset range from 3.73 to 3.87, indicating a generally positive perception of the service. While satisfaction Percentages vary, they range from 62% to 70% in the Satisfied category, and Unsatisfied Percentages range from 8% to 11%. Overall, the data suggests a reasonably favorable sentiment among respondents, with a majority falling within the Satisfied category. However, there is room for improvement to further enhance satisfaction levels and address areas of concern, ensuring a more positive experience for all.*

## **MOOCs**

### **CRITERIA-**

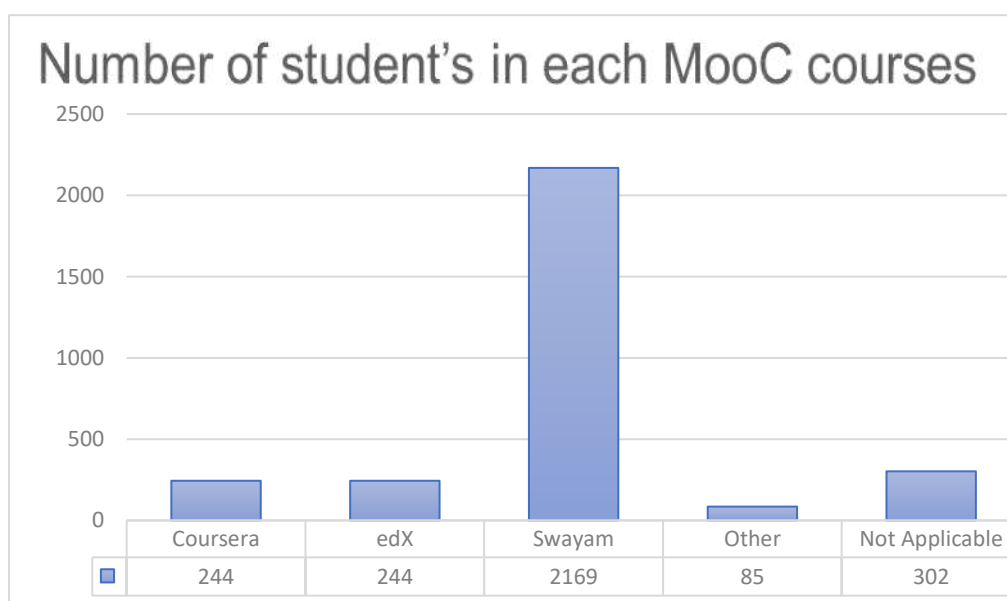
<b>Did you take any MOOC (Massive Online Open Courses) offered by the University?</b>
<b>a) Coursera</b>
<b>b) edX</b>
<b>c) Swayam</b>
<b>d) Other</b>
<b>e) Not Applicable</b>
<b>The course content was understandable, relatable, and applicable to the real world.</b>

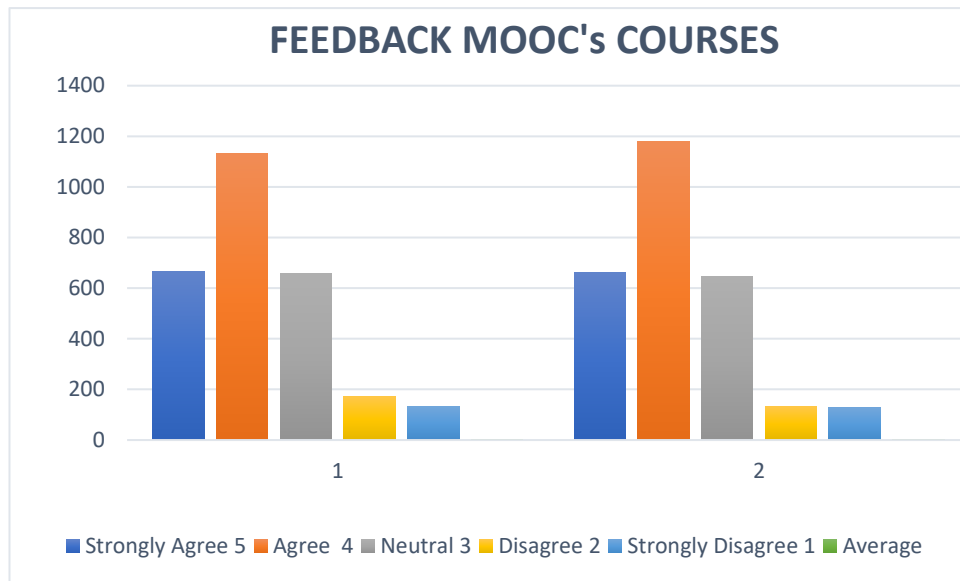
The platform was user-friendly, and understandable, and enriched my online learning experience.

MOOCs	
Coursera	244
edX	244
Swayam	2169
Other	85
Not Applicable	302

The data represents ‘MOOCs’ offered by the university and completed by the students.

Strongly Agree	Agree	Neutral	Disagree	Strongly Disagree	Average	SATISFIED	UNSATISFIED %
						%	
5	4	3	2	1			
666	1132	657	172	134	3.68	64%	11%
663	1178	646	133	128	3.7	66%	9%



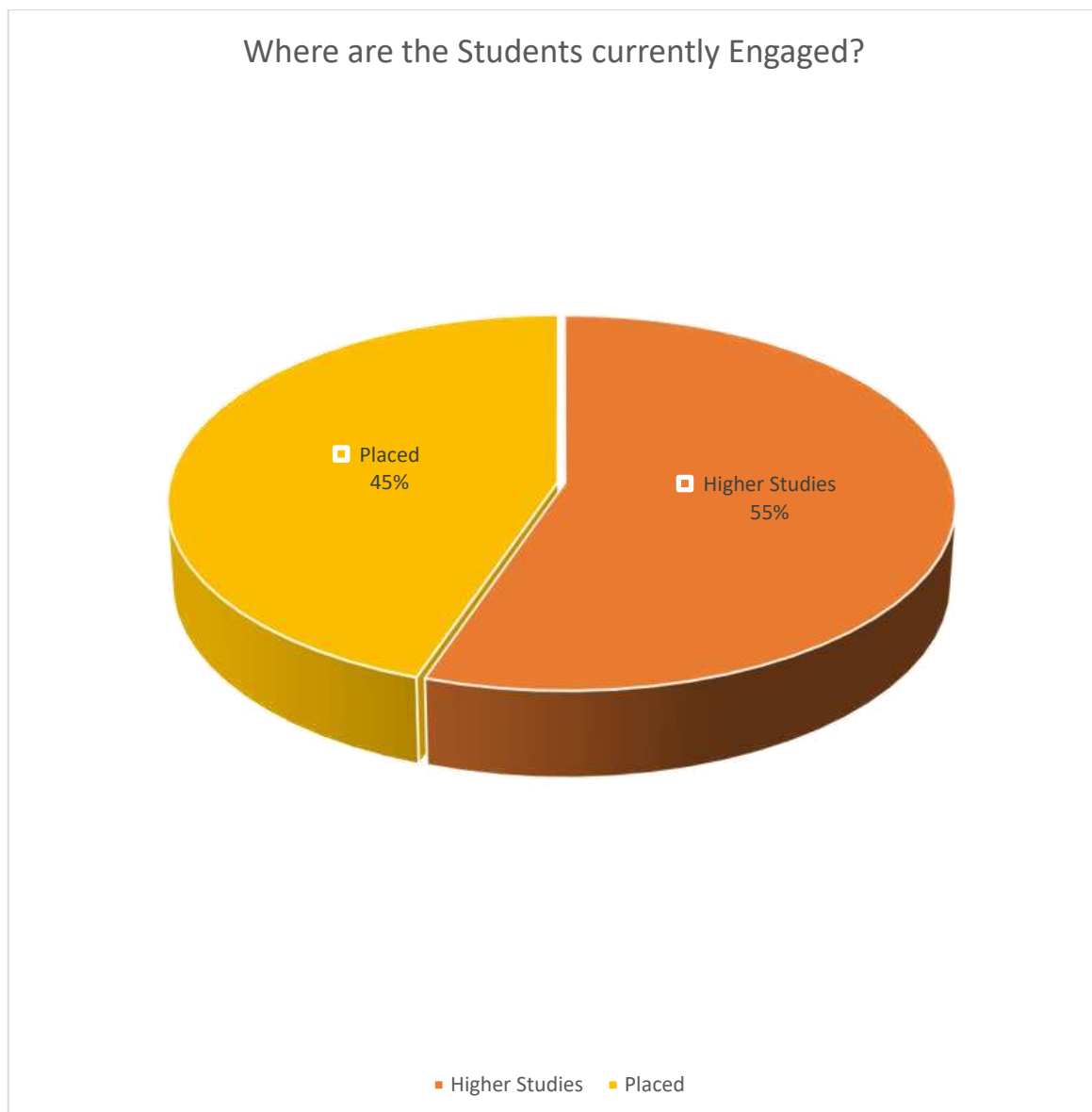


**Students are satisfied with the courses.**

## Alumni Feedback Data Analysis

### Where are the students currently Engaged?

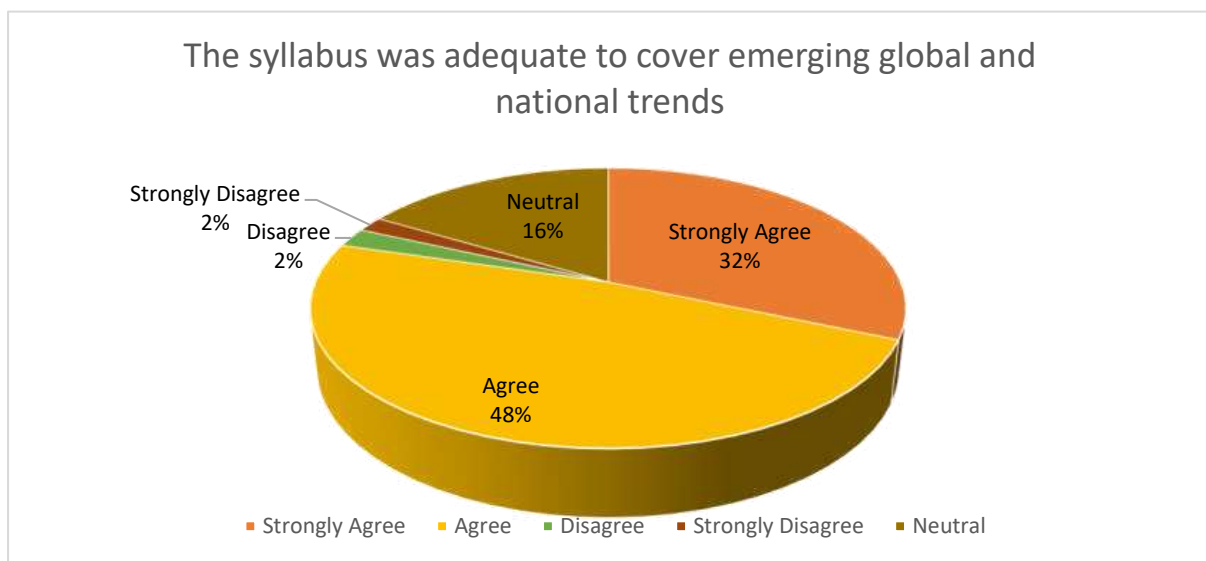
Where are you currently Engaged?	Number of students	Percentage
Higher Studies	781	55%
Placed	632	45%





## 1. The syllabus was adequate to cover emerging global and national trends-

The syllabus was adequate to cover emerging global and national trends	Number of Students	Percentage
Strongly Agree	445	31%
Agree	680	48%
Disagree	31	2%
Strongly Disagree	25	2%
Neutral	232	16%

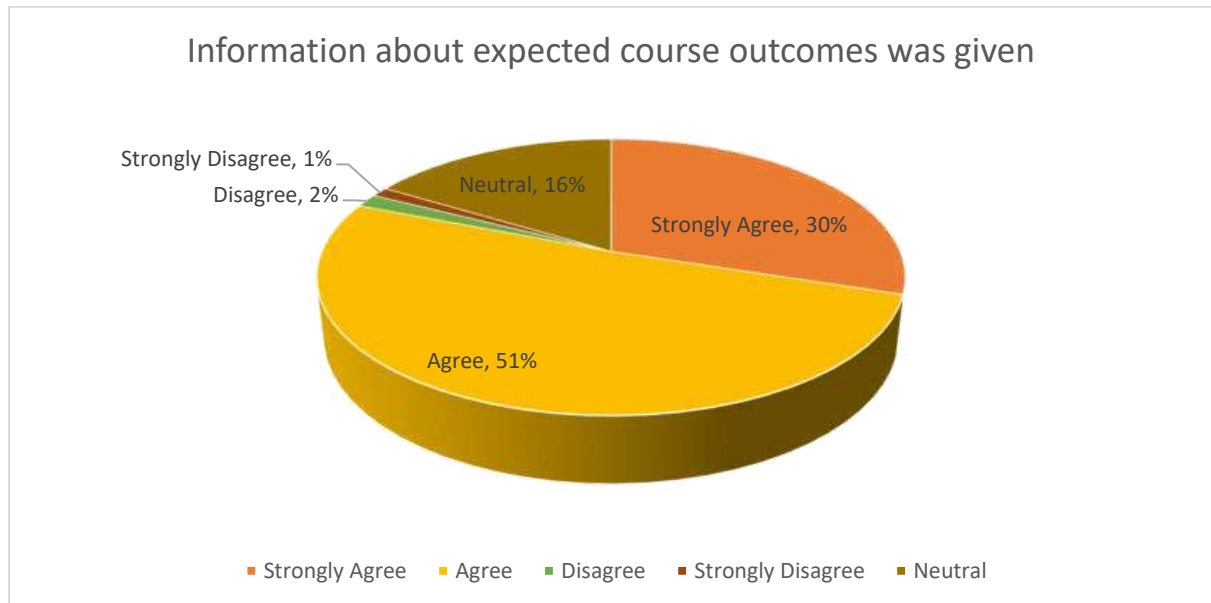


**Graph 1- Percentage of Students who considered the curriculum syllabus adequate to cover emerging global and national trends.**

The majority of students either "Agree" (48%) or "Strongly Agree" (31%) that the syllabus adequately covers emerging global and national trends, indicating strong overall satisfaction (79%). However, a small percentage "Disagrees" (2%) or "Strongly Disagrees" (2%), while 16% remain "Neutral," suggesting room for improvement.

## 2. Information about Expected Course outcomes was given-

Information about expected course outcomes was given	Number of Students	Percentage
Strongly Agree	423	30%
Agree	721	51%
Disagree	22	2%
Strongly Disagree	16	1%
Neutral	231	16%

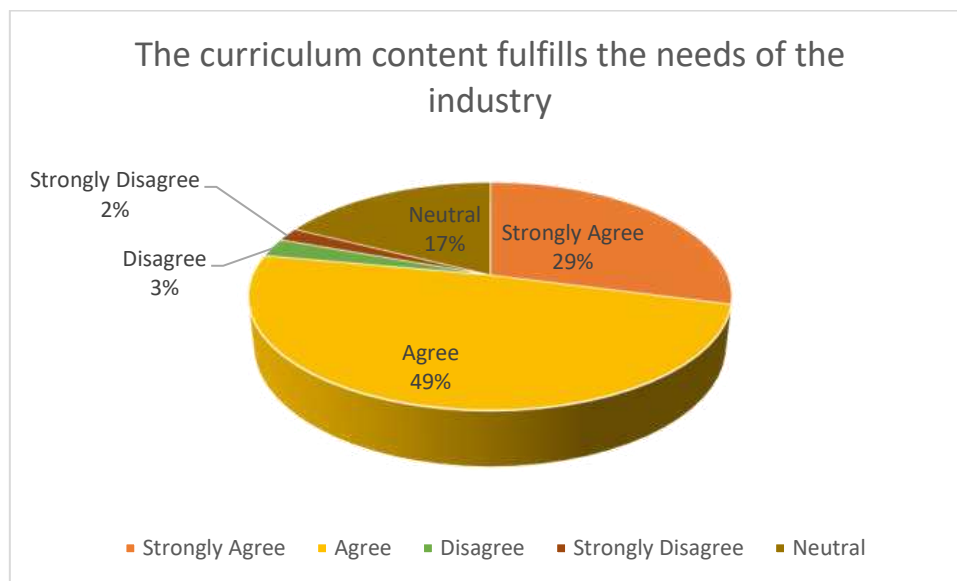


**Graph 2- Percentage of Students who considered the information about expected course outcomes was given.**

In terms of providing information about expected course outcomes, the majority of students either "Agree" (51%) or "Strongly Agree" (30%), indicating a strong positive perception (81%). A small percentage "Disagrees" (2%) or "Strongly Disagrees" (1%), while 16% remain "Neutral," suggesting the need for further clarification or improvements for a minority of students.

## 3. The curriculum content fulfills the needs of the industry-

The curriculum content fulfills the needs of the industry	Number of Students	Percentage
Strongly Agree	411	29%
Agree	690	49%
Disagree	37	3%
Strongly Disagree	27	2%
Neutral	248	18%

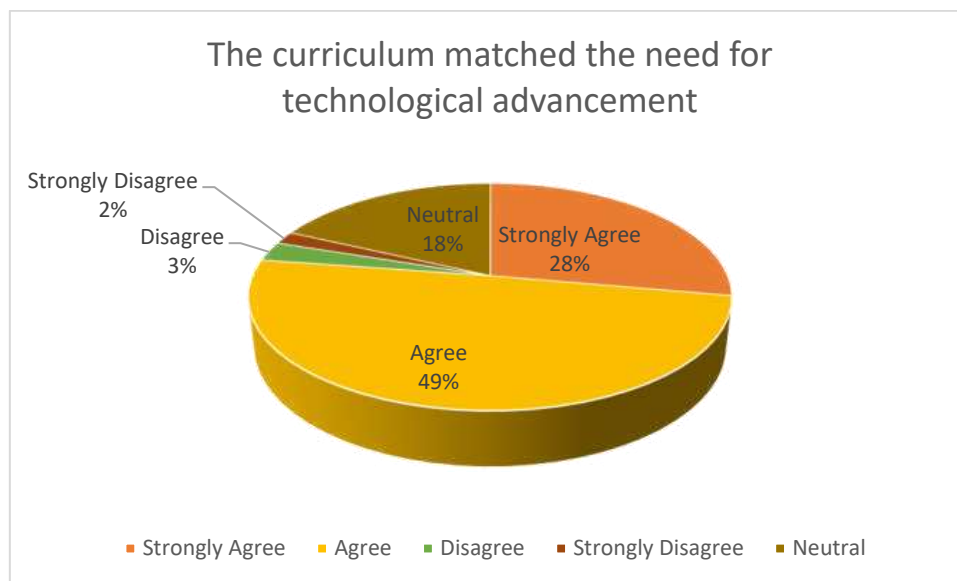


**Graph 3 - Percentage of Students who considered curriculum content fulfilled the needs of the industry**

In terms of curriculum content compatibility with industry needs, a large majority of students "Agree" (49%) or "Strongly Agree" (29%), showing overall satisfaction (78%). However, just a small fraction of "Disagrees" (3%) or "Strongly Disagrees" (2%), while 18% remain "Neutral," implying an opportunity for progress or a disconnect for a minority of students.

## 4. The curriculum matched the need for technological advancement-

The curriculum matched the need for technological advancement	Number of Students	Percentage
Strongly Agree	393	28%
Agree	700	50%
Disagree	39	3%
Strongly Disagree	26	2%
Neutral	255	18%

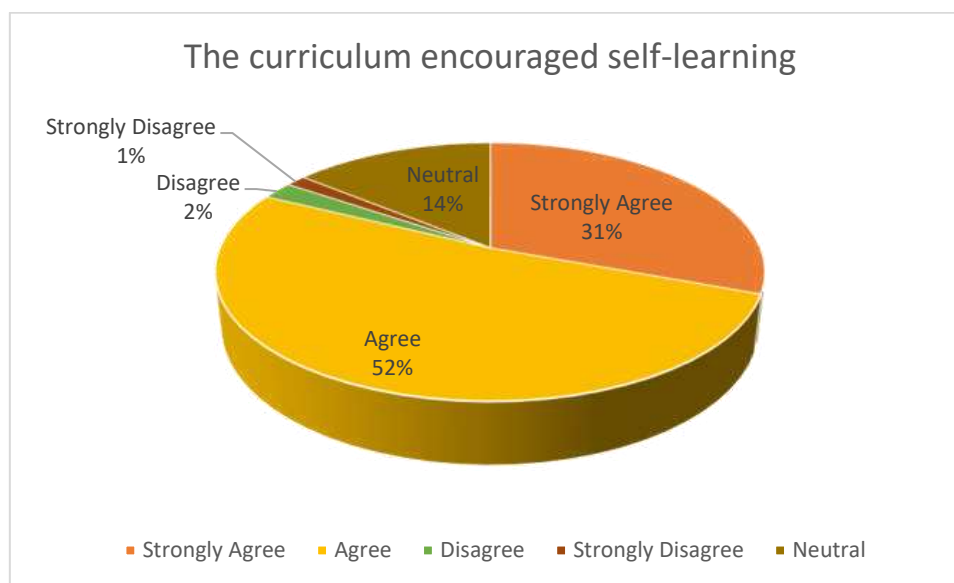


**Graph 4 - Percentage of Students who considered the curriculum matched the need for technological advancement.**

In terms of the curriculum's conformity with technological advancement needs, most students either "Agree" (50%) or "Strongly Agree" (28%), suggesting a good opinion (78%). Just over one percent "Disagrees" (3%) or "Strongly Disagrees" (2%), while 18% remain "Neutral," indicating a potential need to improve technology-related content for a minority of students.

## 5. The curriculum encouraged self-learning-

The curriculum encouraged self-learning	Number of Students	Percentage
Strongly Agree	433	31%
Agree	730	52%
Disagree	31	2%
Strongly Disagree	20	1%
Neutral	199	14%

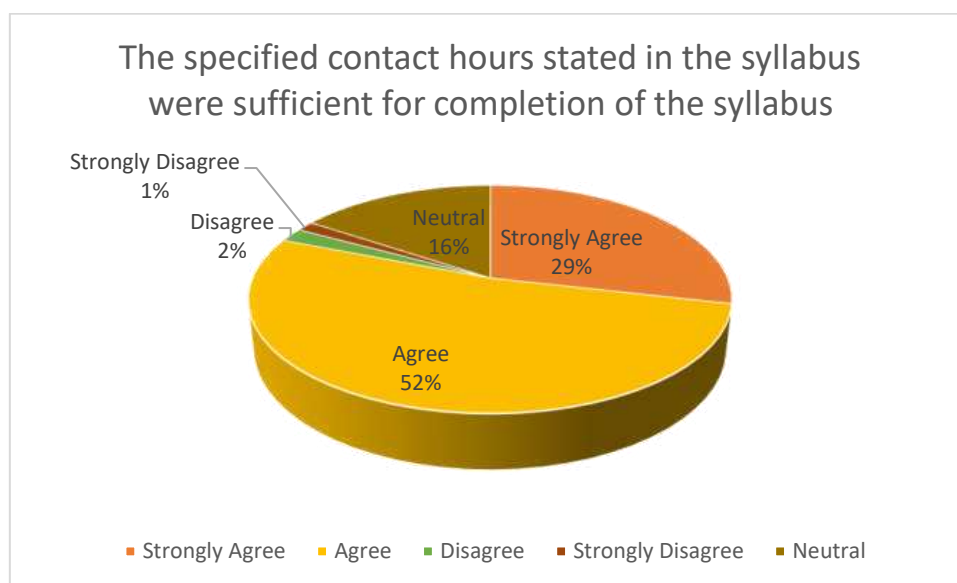


**Graph 5 - Percentage of Students who considered the curriculum encouraged self-learning.**

Concerning the curriculum's support of self-learning, the majority of students "Agree" (52%) or "Strongly Agree" (31%), suggesting a good opinion (83%). A small number "Disagrees" (2%) or "Strongly Disagrees" (1%), while 14% remain "Neutral," implying that a minority of students may benefit from more self-learning opportunities.

6. The specified contact hours stated in the syllabus were sufficient for completion of the syllabus

The specified contact hours stated in the syllabus were sufficient for completion of the syllabus	Number of Students	Percentage
Strongly Agree	404	29%
Agree	740	52%
Disagree	28	2%
Strongly Disagree	20	1%
Neutral	221	16%

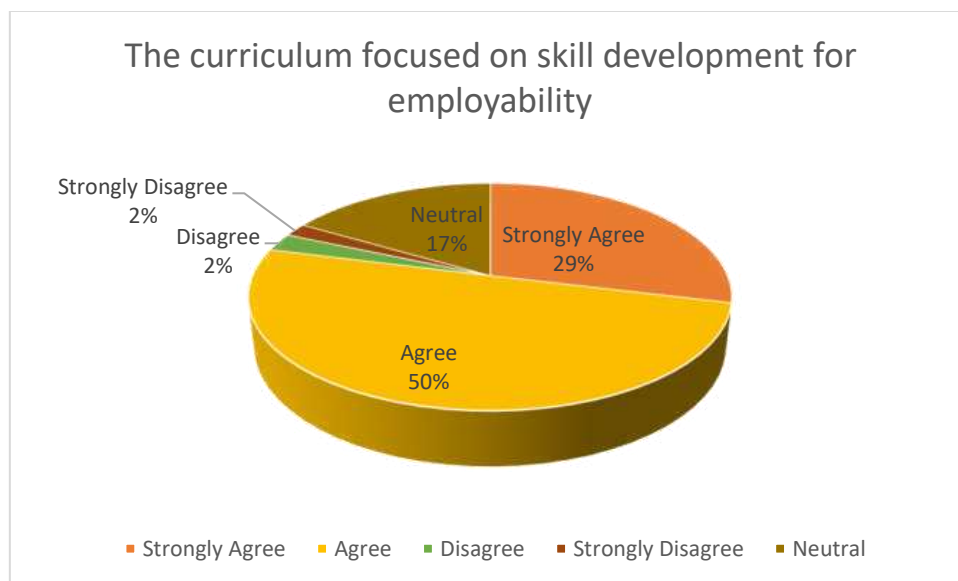


**Graph 6 - Percentage of Students who considered the specified contact hours stated in the syllabus were sufficient for completing the syllabus.**

A considerable majority of students either "Agree" (52%) or "Strongly Agree" (29%), showing overall satisfaction (81%), with the sufficiency of stated contact hours for syllabus completion. A tiny Percentage (2%) "Disagrees" or "Strongly Disagrees," while 16% remain "Neutral," implying that a minority may see the need for additional hours of contact or changes.

## 7. The curriculum focused on skill development for employability-

The curriculum focused on skill development for employability	Number of Students	Percentage
Strongly Agree	407	29%
Agree	709	50%
Disagree	36	3%
Strongly Disagree	27	2%
Neutral	234	17%

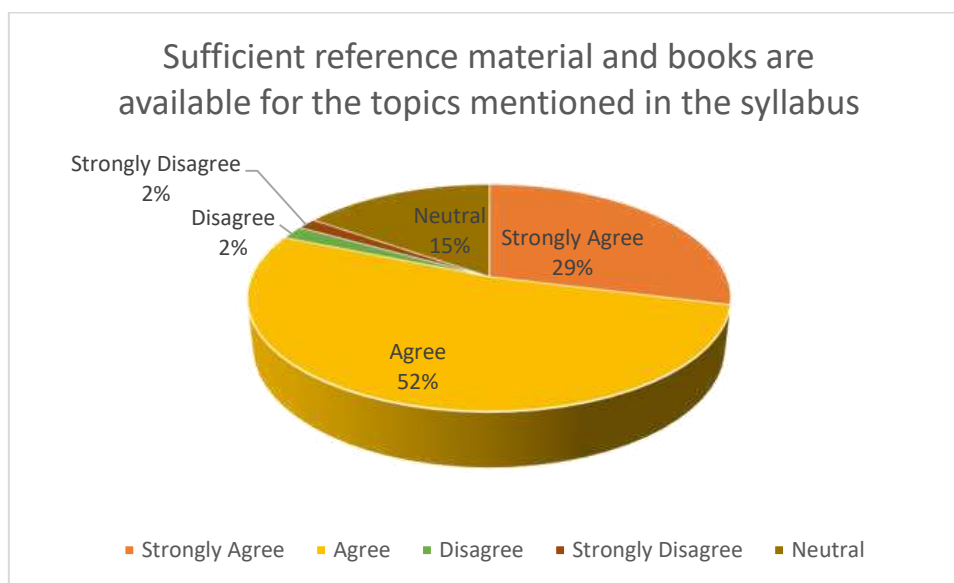


**Graph 7 - Percentage of Students who considered the curriculum focused on skill development for employability.**

Considering the curriculum's emphasis on skill development for employability, most students "Agree" (50%) or "Strongly Agree" (29%), demonstrating a favorable review (79%). A minor Percentage of "Disagrees" (3%) or "Strongly Disagrees" (2%), while 17% remain "Neutral," suggesting there is room for advancement.

**8. Sufficient reference material and books are available for the topics mentioned in the syllabus-**

Sufficient reference material and books are available for the topics mentioned in the syllabus	Number of Students	Percentage
Strongly Agree	409	29%
Agree	739	52%
Disagree	27	2%
Strongly Disagree	22	2%
Neutral	216	15%



**Graph 8- Percentage of Students who considered Sufficient reference material and books were available for the topics mentioned in the syllabus.**

When it comes to the availability of reference material and books for the syllabus topics, a large majority of students either "Agree" (52%) or "Strongly Agree" (29%), indicating satisfaction (81%). A small percentage "Disagrees" (2%) or "Strongly Disagrees" (2%), while 15% remain "Neutral," indicating potential room for improvement to better meet the needs of a minority of students.



## Employer's Feedback

In July, the placement cell gathers feedback from employers, aiming to enhance its comprehension of the prevailing industry benchmarks. This proactive approach allows the institution to align its curriculum with the latest demands of the job market, ensuring that students are well-prepared for professional roles.

By soliciting input from employers, the placement cell can identify areas for improvement and implement necessary changes to bridge the gap between academia and industry requirements. This cyclical process of feedback collection and curriculum refinement contributes to producing graduates who are equipped with the skills and knowledge vital for success in the ever-evolving job landscape.

Criteria for the feedback are as mentioned below-

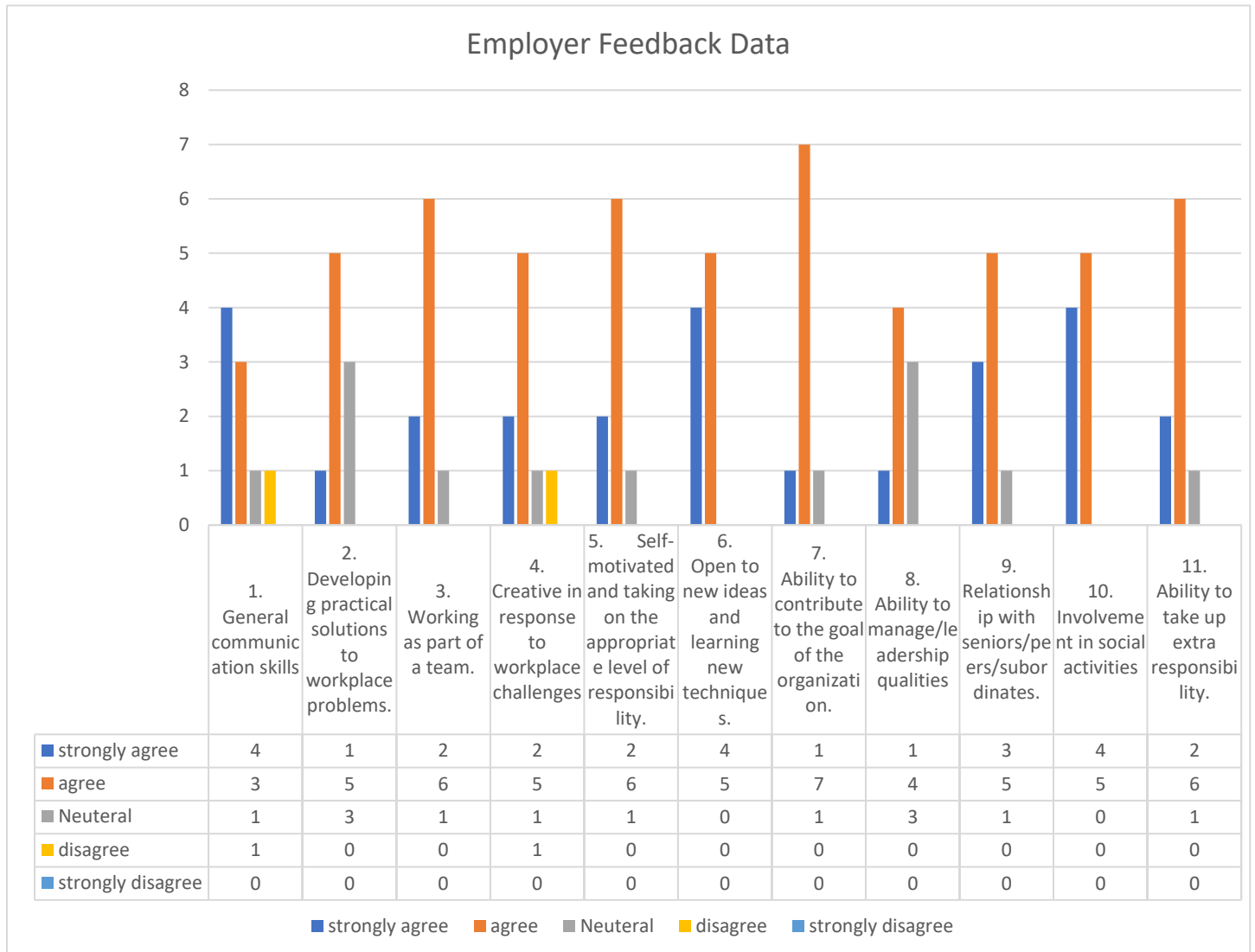
<b>Criteria</b>
1. General communication skills
2. Developing practical solutions to workplace problems.
3. Working as part of a team.
4. Creative in response to workplace challenges
5. Self-motivated and taking on the appropriate level of responsibility.
6. Open to new ideas and learning new techniques.
7. Ability to contribute to the goal of the organization.
8. Ability to manage/leadership qualities
9. Relationship with seniors/peers/subordinates.
10. Involvement in social activities
11. Ability to take up extra responsibility.

<b>QUESTIONS/COMPANY</b>	<b>Abaca System</b>	<b>Aditya Birla Capital</b>	<b>Aditya Birla's Health Insurance</b>	<b>Eazydiner</b>	<b>Eazydiner 2</b>	<b>Hughes Systique</b>	<b>Icici Bank</b>	<b>Learning Routes</b>	<b>Loreal India</b>
1. General communication skills	Neutral	Strongly Agree	Agree	Strongly Agree	Strongly Agree	Agree	Strongly Agree	Agree	Disagree
2. Developing practical solutions to workplace problems.	Agree	Strongly Agree	Agree	Neutral	Agree	Agree	Agree	Neutral	Neutral
3. Working as part of a team.	Agree	Strongly Agree	Strongly Agree	Agree	Agree	Agree	Agree	Agree	Neutral
4. Creative in response to workplace challenges	Agree	Strongly Agree	Strongly Agree	Neutral	Agree	Agree	Agree	Agree	Disagree
5. Self-motivated and taking on the appropriate level of responsibility.	Agree	Strongly Agree	Strongly Agree	Agree	Neutral	Agree	Agree	Agree	Agree
6. Open to new ideas and learning new techniques.	Agree	Strongly Agree	Strongly Agree	Agree	Agree	Strongly Agree	Strongly Agree	Agree	Agree
7. Ability to contribute to the goal of the organization.	Agree	Strongly Agree	Agree	Agree	Agree	Agree	Agree	Neutral	Agree
8. Ability to manage/leadership qualities	Agree	Strongly Agree	Agree	Neutral	-	Agree	Agree	Neutral	Neutral
9. Relationship with seniors/peers/superordinates.	Agree	Strongly Agree	Strongly Agree	Agree	Agree	Agree	Strongly Agree	Neutral	Agree
10. Involvement in social activities	Agree	Strongly Agree	Strongly Agree	Agree	Agree	Agree	Strongly Agree	Agree	Strongly Agree
11. Ability to take up extra responsibility.	Agree	Strongly Agree	Strongly Agree	Agree	Neutral	Agree	Agree	Agree	Agree

	General communication skills	Developing practical solutions to workplace problems.	Working as part of a team.	Creative in response to workplace challenges	Self-motivated and taking on the appropriate level of responsibility.	Open to new ideas and learning new techniques.	Ability to contribute to the goal of the organization.	Ability to manage/leadership qualities	Relationship with seniors/peers/subordinates.	Involvement in social activities	Ability to take up extra responsibility
Strongly Agree	4	1	2	2	2	4	1	1	3	4	2
Agree	3	5	6	5	6	5	7	4	5	5	6
Neutral	1	3	1	1	1	0	1	3	1	0	1
Disagree	1	0	0	1	0	0	0	0	0	0	0
Strongly Disagree	0	0	0	0	0	0	0	0	0	0	0

## EMPLOYER'S FEEDBACK ANALYSIS

The employee Feedback emphasizes the curriculum's strong alignment with industry requisites and its consistent updates. The curriculum effectively fosters entrepreneurship, offers industry-relevant courses, and focuses on skill-oriented development. The commitment to regular curriculum reviews showcases the institution's dedication to preparing students for a dynamic professional landscape.



## **STAFF FEEDBACK**

This feedback was provided through a third party as part of an assessment conducted by "A Great Place to Work." The feedback took place in June 2023 and is valid until June 2024. The assessment covered four categories:

1. Below Supervisory
2. Supervisory
3. Managerial
4. Senior Managerial

The differentiation in satisfactory levels among these categories is due to the organizational hierarchy. Further details explaining this distinction are provided in the report below.

**The certificate of completion of the Survey is as shown below-**



## **Survey Framework-**

Employee surveys are invaluable tools for organizations seeking to gauge and enhance their workplace environment. These surveys provide a comprehensive understanding of various aspects that contribute to employee satisfaction and engagement. In this context, the survey delves into five crucial categories, each playing a pivotal role in shaping the overall employee experience.

Credibility stands as the foundation, reflecting the trust employees have in the organization's leadership and their confidence in the company's mission and values.

Respect emphasizes the importance of fostering a workplace culture where every individual feels valued and appreciated. Fairness ensures that policies and practices within the organization are just and equitable, promoting a sense of justice among employees.

Pride measures the level of satisfaction and connection employees feel toward their work, translating into a source of personal accomplishment. Lastly, camaraderie evaluates the strength of interpersonal relationships among colleagues, emphasizing the significance of teamwork and a positive social atmosphere.

As organizations strive to create environments that attract, retain, and motivate talent, understanding the dynamics within these categories becomes paramount. The survey's exploration of credibility, respect, fairness, pride, and camaraderie serves as a strategic compass, guiding organizations toward targeted improvements that can positively impact the overall employee experience.

**1. Credibility-**

<b>Area</b>	<b>Below Supervisory</b>	<b>Supervisory</b>	<b>Managerial</b>	<b>Senior Managerial</b>
<b>Communication</b>	61.8	75.0	80.8	91.3
<b>Competence</b>	67.0	78.5	83.5	85.8
<b>Integrity</b>	57.2	74.4	77.2	86.8



## 2. Respect

Area	Below Supervisory	Supervisory	Managerial	Senior Managerial
Support	60.6	75.6	80.6	88
Collaboration	58	68	75	85
Caring	62.3	76.9	83.6	90.0

## 3. Fairness-

Area	Below Supervisory	Supervisory	Managerial	Senior Managerial
Equity	46.8	64.3	73.5	80.3
Impartiality	45.7	59.0	67.0	77.0
Justice	65.6	77.4	85.2	92.2

**4. Pride-**

<b>Area</b>	<b>Below Supervisory</b>	<b>Supervisory</b>	<b>Managerial</b>	<b>Senior Managerial</b>
<b>Personal Job</b>	<b>70</b>	<b>80</b>	<b>89</b>	<b>95</b>
<b>Team</b>	<b>77.7</b>	<b>81.3</b>	<b>86.0</b>	<b>88.7</b>
<b>Corporate Image</b>	<b>72.7</b>	<b>79.8</b>	<b>84.7</b>	<b>91.0</b>

**Camaraderie-**

<b>Area</b>	<b>Below Supervisory</b>	<b>Supervisory</b>	<b>Managerial</b>	<b>Senior Managerial</b>
<b>Intimacy</b>	<b>67.3</b>	<b>81.3</b>	<b>87.7</b>	<b>91.0</b>
<b>Hospitality</b>	<b>67.0</b>	<b>76.7</b>	<b>79.7</b>	<b>86.3</b>
<b>Community</b>	<b>64</b>	<b>75</b>	<b>80</b>	<b>86</b>

\*\*\*\*\*