



# **Student Handbook 2023**



# **Shoolini University**

Student Handbook

# 1 Table of Contents

1	Table of Contents .....	3
2	Introduction.....	7
2.1	Welcome Message.....	7
2.2	University Mission, Vision, and Values .....	8
2.2.1	Values .....	10
2.3	Overview of the Campus.....	10
3	Academic Information .....	12
3.1	Academic Calendar .....	12
3.2	Degree Requirements.....	18
3.3	Registration and Enrolment Procedures.....	19
3.4	Grading System and Policies .....	21
3.4.1	Evaluation Process .....	21
3.4.2	Grading System.....	22
3.4.3	Pharmaceutical Sciences Grading.....	22
3.4.4	Examination Components and Policies.....	22
3.4.5	Transparency & Integrity .....	22
3.4.6	Question Paper Integrity .....	22
3.4.7	Grievance Redressal.....	23
3.5	Academic Integrity and Plagiarism Policies .....	24
3.5.1	Introduction.....	24
3.5.2	Policy Objectives .....	24
3.5.3	Principles of Academic Integrity.....	24
3.5.4	Definitions and Examples of Academic Misconduct .....	24
3.5.5	Plagiarism Prevention and Detection .....	25
3.5.6	Consequences of Breaching the Policy .....	25
3.5.7	Education and Awareness.....	25
3.5.8	Conclusion .....	25
4	Research Opportunities .....	26
4.1	Introduction to Research at Shoolini University .....	26
4.2	Undergraduate Research Opportunities .....	27

4.3	Postgraduate and Doctoral Research Opportunities.....	28
4.4	Interdisciplinary Research Centres .....	28
4.6	Research Funding and Grants .....	30
4.7	Research Workshops, Seminars, and Training .....	31
4.8	Research Publications and Journals .....	31
4.9	Intellectual Property and Patent Support .....	31
4.10	Ethics and Compliance in Research.....	32
4.11	Conclusion .....	36
4.12	Contact and Further Information.....	36
5	Student Conduct and Responsibility .....	38
5.1	Code of Conduct .....	38
5.1.1	Safety Concerns .....	38
5.1.2	Prohibited Activities.....	38
5.1.3	Disrespectful Behaviour.....	38
5.1.4	Misuse of University Property & Resources.....	38
5.1.5	Unlawful Activities .....	39
5.1.6	General Misconduct .....	39
5.2	Disciplinary Procedures .....	39
5.2.1	Individual Punishments.....	39
5.2.2	Group Punishments.....	39
5.2.3	Reprimand of Record.....	40
5.2.4	Conduct Probation.....	40
5.2.5	Suspension .....	40
5.2.6	Rustication .....	41
5.2.7	Expulsion .....	41
5.3	Student Rights and Responsibilities.....	41
5.4	Grievance and Appeal Procedures .....	45
6	Campus Resources and Services.....	47
6.1	Library.....	47
6.2	Campus Map .....	48
6.3	Housing and Dining Information .....	49
6.4	Library and IT Services.....	52
6.5	Health and Counselling Services .....	53

6.6	Career Services .....	56
6.7	Accessibility and Disability Services .....	57
6.8	Mentor Mentee Scheme .....	60
7	Student Life and Activities.....	61
7.1	Student Organizations and Clubs.....	61
7.1.1	Types of Organizations and Clubs .....	61
7.1.2	Benefits of Joining .....	67
7.1.3	How to Start a New Club or Organization .....	67
7.1.4	Guidelines and Responsibilities .....	68
7.1.5	Resources and Support.....	68
7.1.6	Student Council.....	68
7.1.7	Contact Information .....	69
7.2	Recreational Facilities and Sports.....	69
8	Financial Information.....	75
	FEE STRUCTURE FOR ACADEMIC YEAR 2023 - 24* .....	75
9	Safety and Security .....	85
9.1	Campus Safety Policies.....	85
9.1.1	Security Infrastructure.....	85
9.1.2	Emergency Response Team (ERT) .....	85
9.1.3	Access Control .....	85
9.1.4	Anti-Discrimination and Harassment Policies .....	85
9.1.5	Awareness Campaigns .....	85
9.2	Emergency Procedures.....	86
9.2.1	The Pillar of Safety: Emergency Response Team (ERT) .....	86
9.2.2	Always Accessible: The 24/7 Emergency Hotline .....	86
9.2.3	Medical Response and Care.....	86
9.2.4	Fire Safety: Preparedness and Response.....	86
9.2.5	Natural Disaster Protocols .....	86
9.2.6	Cybersecurity: Safeguarding the Digital Realm .....	87
9.2.7	Communication: Keeping the Community Informed .....	87
9.3	Reporting Incidents.....	87
9.3.1	A Culture of Open Communication .....	87
9.3.2	Accessible Reporting Channels .....	87

9.3.3	The Power of Timely Reporting.....	88
9.3.4	Shielding the Reporter .....	88
9.3.5	Building Awareness and Responsibility .....	88
10	Policies and Regulations .....	89
10.1	Privacy & Confidentiality at Shoolini University: Safeguarding Personal Information.....	89
10.1.1	A Commitment to Ethical Standards.....	89
10.1.2	Rigorous Data Management and Security.....	89
10.1.3	Student-Centric Privacy Measures.....	89
10.1.4	Upholding Research Ethics .....	89
10.1.5	Cybersecurity & IT Infrastructure.....	89
10.1.6	Responsible External Collaboration.....	90
10.1.7	Education & Awareness Initiatives .....	90
10.2	Shoolini University's Stance on Non-Discrimination: Celebrating Diversity & Promoting Inclusion.....	90
10.2.1	Broad Scope of Non-Discrimination Policies .....	90
10.2.2	Zero Tolerance for Discriminatory Behaviour .....	90
10.2.3	Education & Training Initiatives.....	91
10.2.4	Efficient Reporting & Grievance Redressal.....	91
10.2.5	Curriculum Embracing Diversity .....	91
10.2.6	University Leadership's Role .....	91
10.3	Shoolini University - Comprehensive Institutional Policies and Regulations Guide .....	91
10.3.1	Academic Integrity Policy .....	91
10.3.2	Attendance Policy .....	92
10.3.3	Grievance Redressal Policy .....	92
10.3.4	Anti-Ragging Policy .....	92
10.3.5	Research and Ethical Guidelines.....	92
10.3.6	Financial Aid and Scholarship Policies.....	93
10.3.7	IT and Cybersecurity Policies .....	93
10.3.8	Library Policies .....	93
10.3.9	Environmental Sustainability Policy.....	93
11	International Students Section .....	94
12	Contact Information .....	96

## 2 Introduction

### 2.1 Welcome Message

Dear Students

Welcome to Shoolini University, an institution carved from the dream of distinguished academicians, crafted to offer superior university education to the budding talents of Himachal and our great nation. Rooted in research, innovation, and community service, our foundation is the vision of Dr. P.K Khosla, an illustrious Oxford Alumnus and retired Vice-Chancellor. The guidance and mentorship of luminaries like Dr. M.S Swaminathan have paved our way towards becoming one of India's top 25 private universities.

Our multifaceted institution spans across eight esteemed faculties, underpinned by over 225 dedicated faculty members, the majority of whom are ardently engaged in research. Our community is vibrant and diverse, with over 5,000 students hailing from 28 states of India and 8 countries worldwide. Tucked amidst the pristine landscapes, Shoolini boasts one of India's most eco-friendly campuses, a haven for academic and personal growth.

Our accolades speak volumes about our relentless pursuit of excellence. Recognized among India's elite educational institutions, we proudly stand as the 73rd ranked university in NIRF ratings. Our Pharmacy, Business School, and Engineering Faculty have also been bestowed with remarkable rankings, reflecting our dedication to comprehensive education.

Our forward-thinking vision, aligned harmoniously with NEP-2020, has set benchmarks in Indian higher education. From our unwavering focus on research to introducing multidisciplinary pedagogy, CBCS, and liberal arts, we have remained pioneers. The SPRINT programme stands testament to our commitment to ensuring exceptional placements for our students. Furthermore, our foresight led us to integrate online learning back in 2013, and today, in these challenging times, we pride ourselves on providing one of India's premier online platforms.

Our dedication isn't just restricted to the classroom; it permeates into the very fabric of society. Through impactful research and steadfast support, we've sponsored education for over 1000 lesser-privileged students, becoming a beacon of hope and change.

At the heart of Shoolini is our unwavering commitment to research. This commitment resonates through our outstanding h-Index of 118, an accolade unparalleled by any University established post-2009. Our FWCI of 2.03, on par with the world's top 10 universities, and a remarkable 1600+ patents, placing us as India's 3rd highest Patent Filer in 2019, are shining emblems of our academic and innovative prowess.

As you embark on this transformative journey with us, remember that you are not just joining a university; you're becoming a part of a legacy, a community, and a future that shines bright with promise.

Welcome to Shoolini University, where dreams transform into realities.

Warm Regards  
Prof. Prem Kumar Khosla  
Chancellor

## 2.2 University Mission, Vision, and Values

**Vision:** Shoolini University's vision is based on the five-pillar model.

### *THE FIVE-PILLAR MODEL*

**Focus On Research and Innovation:** We believe that a great university needs to be built around the foundation of deep research and innovation capabilities. Our research model is unique to private universities in India, and we believe this will help us achieve our vision.

**Our Governance:** Transparent and inspirational governance is critical to build a great university. Shoolini is founded and managed by academicians, and we function as a true not-for-profit, in letter and spirit. Our Board and other statutory committees drive the mission and vision of Shoolini.

**Our Focus on Innovative Pedagogy:** Over the years, we have initiated several innovative and flexible pedagogy platforms to provide the best learning experience to our students. These include, SPRINT, eUniv, writing seminars, Open Electives, Guru Series, etc.

**Inspirational Faculty:** Great teachers produce great students. With this belief, we have always strived to hire qualified and exceptional faculty. Many of our faculty members are trained at the best universities of the world, including Oxford, UC Berkeley, IITs and IIMs.

**Motivated Students:** We focus on accepting distinctive students from smaller towns and villages.

### **Mission:**

Shoolini University's Mission is to be a Role Model for Private University Education in India. We believe our success will make other Private Universities follow our path and make quality university education more accessible.

**World-Class Education:** It is our mission to provide world-class yet affordable education to the masses of India, especially the lesser-privileged students from small towns and villages. To fulfill this mission, we have built deep operating and capital efficiencies at affordable fees, have built an endowment fund for scholarships to the lesser privileged, and have brought innovation, skill-based learning, and technology into our pedagogy. Our mission is to produce students who are highly motivated, good human beings, technically sound, skilled, and employable, and nation builders.

**Honest, Clean and Compliant:** It is our endeavour to be honest in everything we do. As a not-for-profit university, we operate with the highest standards of governance and the belief that great institutions of the future will be built on the Gandhian traits of honesty and integrity.

**Community Impact Through Research and Innovation:** We believe that universities should have a deep impact on the community through research and innovation. Globally, this is proven model with communities such as the Silicon Valley, supported by institutions such as Stanford and UC-Berkeley. Our researchers work closely with our local community on several critical issues such as cancer, water, food and technology to help change the lives of people in our community.



Happiness: We aspire to provide happiness and spirituality to all our stakeholders – students, faculty, staff and others. We operate like a family, trying to bring happiness into the lives of everyone we touch. Our belief is simple – happy people are successful and contribute towards nation building.

### **Research and Innovation:**

We uphold the belief that the foundation of an eminent university is forged through profound research and innovation. Our unique approach to research, unparalleled among private institutions in India, serves as our beacon towards accomplishing our vision.

### **Governance:**

Transparent and inspiring governance is the cornerstone of our institution. Authentically not-for-profit in nature, Shoolini University's operations are steered by its learned academicians. Our Board and statutory committees are devoted torchbearers of our vision and mission.

### **Innovative Pedagogy:**

Over the years, we have pioneered innovative and flexible pedagogic methods, ensuring an unparalleled learning experience for our students. This includes ground-breaking initiatives like SPRINT, eUniv, Writing Seminars, Open Electives, and the Guru series.

### **Inspirational Faculty:**

Our conviction rests in the idea that extraordinary teachers cultivate extraordinary students. We take immense pride in our globally trained faculty, with many having honed their expertise at esteemed institutions like Oxford, UC Berkeley, IITs, and IIMs.

### **Motivated Students:**

We prioritize bringing in diligent students, particularly from smaller towns and villages, nurturing them into the next generation of leaders.

*We envision our success to pave the way for other private institutions, elevating the quality of university education across the nation. Our mission is anchored on four pillars:*

#### **1. World-Class Education:**

Our paramount objective is to impart world-class, yet accessible education, particularly to the lesser-privileged and those hailing from smaller towns and villages. Through scholarships, innovative pedagogy, and skill-based learning, we aspire to produce students who are not just technically proficient, but also ethical, employable, and committed to nation-building.

#### **2. Honesty, Cleanliness, and Compliance:**

Integrity is our hallmark. Functioning as a not-for-profit institution, we operate under the highest governance standards. We believe in establishing institutions that resonate with Gandhian principles of honesty and integrity.

#### **3. Community Impact through Research and Innovation:**

Universities should serve as catalysts for positive community transformation. Taking inspiration from global models, our research endeavours address critical challenges, including cancer, water conservation, and food security. We strive to transform lives within our community.

#### **4. Happiness:**

At Shoolini, we wish to infuse happiness and spiritual well-being into all our stakeholders - students, faculty, staff, and the broader community. Functioning as an extended family, our goal is to enrich the lives of all associated with us, believing that content individuals contribute significantly to nation-building.

### **2.2.1 Values**

#### **Commitment to Excellence:**

Whether in research, pedagogy, or service, we strive for unparalleled excellence.

#### **Integrity and Honesty:**

We maintain the highest standards of ethical behaviour and transparency in all our endeavours.

#### **Community and Collaboration:**

We believe in the collective power of our community and the significance of collaborative growth.

#### **Innovation:**

Continuous innovation, in both teaching and research, stands at the core of our actions.

#### **Holistic Well-being:**

Beyond academic rigor, we emphasize the emotional, spiritual, and mental well-being of our community.

### **2.3 Overview of the Campus**

Nestled in the embrace of pristine landscapes, Shoolini University emerges as a beacon of academic excellence and pioneering research. Founded in 2009 by an illustrious assembly of academicians and professionals, this young and vibrant institution epitomizes the ethos of philanthropy, innovation, and transformative education.

In its relatively short existence, Shoolini has charted an impressive trajectory, marking itself as an innovation-led educational powerhouse. Testament to our dedication, we find pride in our consistent rankings among India's top 100 universities, as per NIRF. Our commitment to innovation is mirrored in our standing as one of the nation's preeminent generators of patents, matching global stalwarts in research and creative output.

Shoolini University stands distinct as a not-for-profit, multi-disciplinary private academic institution. At its core lies an exceptional research and innovation-led model, which we believe is the cornerstone of any leading university. We hold steadfast in the belief that eminent universities play a dual role: propelling

groundbreaking knowledge and innovation while simultaneously uplifting the socio-economic fabric of their communities.

Our international cadre of faculty, paired with our undying emphasis on student career placements, is the backbone of our institution. Our ceaseless endeavors in pedagogical innovation and our zealously motivated student body fuse together, rendering Shoolini University a dynamic player in the global knowledge ecosystem.

Our ethos transcends academic excellence. We are driven by a commitment to nurture the inherent creative potential within each student. By providing unparalleled educational opportunities, we aim to shape the future torchbearers of our nation, fostering leaders who will drive India to unparalleled heights of greatness.

### ***History of the Campus***

Here's a brief timeline of the history & achievements of Shoolini University:

**2004:** A congruent group of expert minds come together to form the Foundation for Life Sciences and Business Management.

**2005:** Shoolini Institute of Lifesciences and Business Management was set up in the heart of Solan town. Associated with Himachal Pradesh University, it remains a success till today

**2009:** Shoolini University was set up as a private university & recognised by the University Grants Commission (UGC).

**2010:** Shoolini University recognised by the Pharmacy Council of India (PCI).

**2016:** National Assessment and Accreditation Council accredited Shoolini University as B++.

**2017:** Shoolini ranked among 101-150 universities of India by MHRD's National Institute Ranking Framework (NIRF).

**2018:** Shoolini becomes one of the top-most patent filers in the country with 187 patents filed in 2018 alone.

**2019:** Shoolini University ranks 19th in India's Best Private Universities and 3rd in Research (All India) by India Today

**2020:** Shoolini University is Top 300 University in Aisa, #1 for Citation by QS Ranking

**2021:** Shoolini ranked among Top 100 universities of India by MHRD's National Institute Ranking Framework (NIRF).

**2022:** Shoolini enters the elite league of Top 200 Global universities as per Times Higher Education Impact Rankings 2022

**2022:** Shoolini becomes No.1 Private University in India (Times Higher Education Rankings 2023).

**2022:** Shoolini ranked No.3 Private University by QS World University Rankings 2023.

**2022:** Shoolini becomes No.1 Research University in India and No.9 in Asia in Citations Per Paper (QS World University Rankings Asia 2023).

### 3 Academic Information

#### 3.1 Academic Calendar

##### **Academic Calendar – 2022-23 (ODD SEMESTER)**

FOR EXISTING (UG and PG Students) and All Ph.D. STUDENTS

<b>Allotment of courses and Notification</b>	July 1, 2022
<b>Course Design and Lecture Schedule</b>	July 15, 2022
<b>Release of Timetable</b>	July 27, 2022

##### **SEMESTER (ODD)**

<b>Registration (Online)</b>	July 30- Aug 01, 2022 (Saturday-Monday)
<b>Late Registration (with late fee)</b>	Aug 02-07, 2022 (Tuesday-Sunday)
<b>Orientation/ Induction</b>	Aug. 02, 2022 (Tuesday)
<b>Commencement of Classes</b>	Aug. 03, 2022 (Wednesday)
<b>I Term Examination</b>	Sept 19 – 24, 2022 (Monday-Saturday)
<b>II Term Examination</b>	Nov 10-16, 2022 (Thursday-Wednesday)
<b>Registration for End Term examination (Online)</b>	Nov 29-Dec 4, 2022 (Tuesday-Sunday)
<b>End Term Examination</b>	Dec 13-24, 2022 (Tuesday-Saturday)
<b>Reappear Examination</b>	Dec 26-30, 2022
<b>Payment of tuition fee/Hostel fee for next semester</b>	Dec 01-15, 2022 (Tuesday- Tuesday)
<b>Late fee payment with fine for next semester</b>	Dec 16-30, 2022 (Wednesday- Wednesday)
<b>Result Declaration of End Term Examination</b>	Jan 06, 2023 (Friday)
<b>Winter Vacation (for students) * / Winter semester</b>	Dec 25, 2022 - Feb 19, 2023 (Sunday-Sunday)

**\*Note:** Winter vacation for reappear cases begins from Dec 31, 2022 - Feb 19, 2023

## **Academic Calendar – 2022-23 (ODD SEMESTER)**

FOR Newly admitted UG and PG Students

**Allotment of courses and Notification**  
**Course Design and Lecture Schedule**  
**Release of Timetable**

July 1, 2022  
July 15, 2022  
July 27, 2022

### **SEMESTER (ODD)**

<b>Events</b>	<b>Postgraduate</b>	<b>Undergraduate</b>
<b>Facilitated Coursera courses</b>	July 1, 2022 (Friday)	July 1, 2022 (Friday)
<b>Registration (Online)</b>	Aug 04-08, 2022 (Thursday-Monday)	Aug 11-15, 2022 (Thursday-Monday)
<b>Orientation/ Induction</b>	Aug. 9-10, 2022 (Tuesday-Wednesday)	Aug. 16-17, 2022 (Tuesday-Wednesday)
<b>Commencement of Classes</b>	Aug 11, 2022 (Thursday)	Aug 18, 2022 (Thursday)
<b>I Term Examination</b>	Sept 19 – 24, 2022 (Monday-Saturday)	Sept 19 – 24, 2022 (Monday-Saturday)
<b>II Term Examination</b>	Nov 10-16, 2022 (Thursday-Wednesday)	Nov 10-16, 2022 (Thursday-Wednesday)
<b>Registration for End Term examination (Online)</b>	Nov 29-Dec 4, 2022 (Tuesday-Sunday)	Nov 29-Dec 4, 2022 (Tuesday-Sunday)
<b>End Term Examination</b>	Dec 13-24, 2022 (Tuesday-Saturday)	Dec 13-24, 2022 (Tuesday-Saturday)
<b>Reappear Examination</b>	Dec 26-30, 2022	Dec 26-30, 2022
<b>Payment of tuition fee/Hostel fee for next semester</b>	Dec 01-15, 2022 (Tuesday- Tuesday)	Dec 01-15, 2022 (Tuesday- Tuesday)
<b>Late fee payment with fine for next semester</b>	Dec 16-30, 2022 (Wednesday- Wednesday)	Dec 16-30, 2022 (Wednesday-Wednesday)
<b>Result Declaration of End Term Examination</b>	Jan 06, 2023 (Friday)	Jan 06, 2023 (Friday)
<b>Winter Vacation (for students) * / Winter semester</b>	Dec 25, 2022 - Feb 19, 2023 (Sunday-Sunday)	Dec 25, 2022 - Feb 19, 2023 (Sunday-Sunday)

**\*Note:** Winter vacation for reappear cases begins from Dec 31, 2022 - Feb 19, 2023

**Academic Calendar – 2022-23 (EVEN SEMESTER)**

**UG and PG NON-FINAL YEAR STUDENTS**

AND

**PhD STUDENTS**

<b>Winter Vacation (for students) / Winter semester</b>	Dec 25, 2022 - Feb 19, 2023 (Sunday-Sunday)
<b>Registration (Online)</b>	Feb. 20-22, 2023 (Monday-Wednesday)
<b>Late Registration (With Late Fee)</b>	Feb 23- 28, 2023 (Thursday- Tuesday)
<b>Commencement of classes</b>	Feb. 23, 2023 (Thursday)
<b>I Term Examination</b>	April 10 - 14, 2023 (Monday-Friday)
<b>II term Examination</b>	May 15 - 20, 2023 (Monday-Saturday)
<b>Payment of Tuition fee/Hostel fee for next semester</b>	May 1 - 15, 2023 (Monday- Monday)
<b>Late fee payment with fine for next semester</b>	May 16 - 30, 2023 (Tuesday- Tuesday)
<b>Registration for End Term examination (Online)</b>	June 6-18, 2023 (Tuesday-Sunday)
<b>End Term Examination</b>	July 4 - 14, 2023 (Monday - Friday)
<b>Reappear Examination</b>	July 19-29, 2023 (Wednesday-Saturday)
<b>Declaration of Result of End Term Examination</b>	July 28, 2023 (Friday)
<b>Summer Vacation (for students) *</b>	July 16 – July 30, 2023 (Sunday - Sunday)

**\*Note:** There is no summer vacation for reappear cases.

**Academic Calendar – 2022-23 (EVEN SEMESTER)**

**FINAL YEAR STUDENTS (UG and PG)**

<b>Winter Vacation (for students) / Winter semester</b>	Dec 25, 2022 - Feb 19, 2023 (Sunday-Sunday)
<b>Registration (Online)</b>	Feb. 20-22, 2023 (Monday-Wednesday)
<b>Late Registration (With Late Fee)</b>	Feb 23- 28, 2023 (Thursday- Tuesday)
<b>Commencement of classes</b>	Feb. 23, 2023 (Thursday)
<b>Mid Term Examination</b>	April 10 - 14, 2023 (Monday-Friday)
<b>Registration for End Term examination (Online)</b>	May 8-20, 2023 (Monday-Saturday)
<b>End Term Examination</b>	May 30 – June 8, 2023 (Tuesday-Thursday)
<b>Reappear Examination</b>	June 12-17, 2023 (Monday-Saturday)
<b>Declaration of Result of End Term Examination</b>	June 15, 2023 (Thursday)

**DEPARTMENT OF STUDENT WELFARE**

**Academic Activity Calendar – 2022-23 (EVEN SEMESTER)**

<b>JANUARY</b>	<b>EVENT DATES FOR EVEN SEMESTER</b>
New Year's Eve	1st to 2nd January
National Road Safety Week	11th to 17th January
National Youth Day	12th January
Lohri Celebration	13th January
Statehood Day	25th January
Republic Day	26th January
<b>FEBRUARY</b>	
YWC Cricket Tournament	1-2nd February
Talk on cancer awareness	2nd February
World Cancer Day	4th February
Visit to IGMCS Shimla	2nd February
Maha Shivratri	18th February
<b>MARCH</b>	
Holi Celebrations for Faculty	7th March

Blood Donation Camp	14th March
World Happiness Day	20th March
World Poetry Day	21st March
World Water Day	22nd March
MOKSH Flash Mob @ Nescafe	17-18th March
Shoolini Theatre Festival	18-2nd March
Excel Series/Vaisakhi Celebration	12th March
Himachal Day Celebration	15th March
<b>APRIL</b>	
Guru Talk by Sanjeev Arora	6th April
Health Camp on World Health Day	6th April
Good Friday	7th April
Easter Day Celebration	9th April
First Term Examination across University	10-14th April
Himachal Day celebration	15th April
Shoolini Theatre Festival	17-21st April
Photography Workshop by Canon	18-19th April
Digital Poster Making	18th April
Session by Earth just and Goonj	18th April
Matalon Competition - Sanchay	22nd April
<b>MAY</b>	
World Labor Day Celebrations	1st May
Pavitra Workshop on Menstrual Health	3rd to 5th May
TEDx Event + Club intros	6th May
World Athletics Day	7th May
Ravinder Nath Tagore Jayanti	7th May
Shoolini Premier League	8-10th May
Mothers' Day celebration	15-20th May
Session of Clubs with new students	13th,20th,27th May
Interdepartmental Football Matches	22-24May
Yuva Utsav 2023 @ Shed's College, Solan	25th May
NCC and NSS Cleaning Drive + Trekking	28th May
<b>JUNE</b>	
Second Term Examination UG/PG Final	16-30th June
World Environment Day	5th June
Shoolini University Play – SILB	5th June
Shoolini Pro Kabbadi League	9th June
Capacity building program under NCW	9th June
<b>JULY</b>	
III Term Examination UG/PG/Ph.D.	3-14th July
Reappear Examination UG/PG/Ph.D.	18-29th July



## **DEPARTMENT OF STUDENT WELFARE**

### **Academic Calendar – 2022-23 (ODD SEMESTER)**

<b>AUGUST</b>	<b>EVENT DATES FOR ODD SEMESTER</b>
Registration (Old UG/PG & PhD), Orientation/Induction.	1st-3rd August
Pin a flag, Commencement of classes, NCC & NSS competitions.	2nd-5th August
Tree Plantation Drive (NSS), Mygov.in quiz, Essay Writing.	4th-6th August
Manav Mandir Visit, Selfie for "Azadi ka Amrit Mahotsav," Raksha Bandhan.	7th-9th August
Face Painting March, Visit to IGMCS SFY, Social Media Challenge.	10th-14th August
Cycling Event, International Youth Day, Independence Day Cultural.	15th-17th August
World Photography Day - Drishyam Club	18th-19th August
<b>SEPTEMBER</b>	
Influencers Visit, Teachers' Day Celebration + Marathon.	1st-2nd September
Awareness for Muscular Dystrophy Walk.	3rd-5th September
1st Term Exam - Old UG/PG & Ph.D. students.	6th-10th September
Induction of Undergraduate Students.	11th-12th September
Induction of Postgraduate Students.	13th-14 <sup>th</sup> September
Guru Talk by Basu Rai Meet n Greet - ALC Trip to Dagshai Museum.	15th-20th September
Daan Utsav + TEDx Open Mic + Cultural show.	21st-24th September
Daan Utsav Animal Welfare Day Garba Night, Dussehra Celebration.	25th-30th September
<b>OCTOBER</b>	
Daan Utsav Fund Raising Pink Day, Daan Utsav Ends Trekking Shivdhar.	1st-3rd October
Shubham Surya Night, World Food Day, Shoolini Premier League	4th-8th October
Shoolini Premier League + Shark Tank @ Shoolini Ventures.	9th-14th October
Diwali Celeb at Manav Mandir, Diwali Celeb @ Campus	15th-20th October

Ekta Diwas Celebs (Walk for Unity), Halloween Night, Theatre Workshop by SCS.	21st-26th October
Shoolini Premier League, Talk Circle Activity by Club Arcadia	27th-31st October
<b>NOVEMBER</b>	
Shoolini Premier League, National Cancer Day, Guru Nanak's Birthday.	1st-5th November
Governor Welcome + Visit to Manav Mandir + Shark Tank Shoolini.	6th-10th November
Cleaning Drive @ SU, World Kindness Day + Chilla trek n photo walk.	11th-15th November
Children's Day @ GSSS Bholi, Term Examination for Old & New UG/PG.	16th-22nd Novemeber
Term Examination for Old & New UG/PG, International Men's Day + SSSS	23rd-30th Novemeber
<b>DECEMBER</b>	
Competition by Sanchay	1st-6th December
Theatre workshop by SCS + Club Interaction by Astrobiology Club	7th December
End Term Examination for Old and New UG /PG & Ph.D. Students	11th-24th December
Christmas Day	25th December

### 3.2 Degree Requirements

In Undergraduate programme, minimum credit requirement for award of a degree shall be:

S/N	Programme	Course Credits
1	B. Tech (4 years)	160
2	B. Pharma	160
3	B. Com (Hons.)	160
4	B. Sc. (Hons.)/ BA (Hons.)	160
5	BA/ B. Sc./ BBA/ BCA (3 years)	120
6	BA LLB (5 years)	200
7	LLB (3 years)	120
8	BBA (4 years)	160
9	B. Design	160
10	Integrated B.Sc. (Hons.) M.Sc.	200

\*The credit requirement for students admitted through lateral entry in B.Tech/ B.Pharm programmes will be counted from 2<sup>nd</sup> year onward.

In Postgraduate programme, minimum credit hour requirement for award of a degree shall be:

S/N	Programme	Course credit	Research	Project	Credits
1	M. Tech	40	40		80
2	M. Pharm	45	35		80
3	MA	80			80
4	M.Sc.	80			80
5	M.Sc. Research	45	35		80
6	MCA	80			80
7	MBA	70		10	80
8	PG Diploma	80			80
9	PhD	15	75		90

### 3.3 Registration and Enrolment Procedures

1. Start the Application Process. Complete Online Form here

[https://admissions.shooliniuniversity.com/?utm\\_source=organic&utm\\_medium=Admprocess&utm\\_campaign=applynow](https://admissions.shooliniuniversity.com/?utm_source=organic&utm_medium=Admprocess&utm_campaign=applynow) and Pay Application Fee.

2. After we receive your application, our Admissions Team will contact you to explain the eligibility criteria for your desired course. Each course has its own eligibility criteria, which may involve exams, interviews, or regulatory requirements.

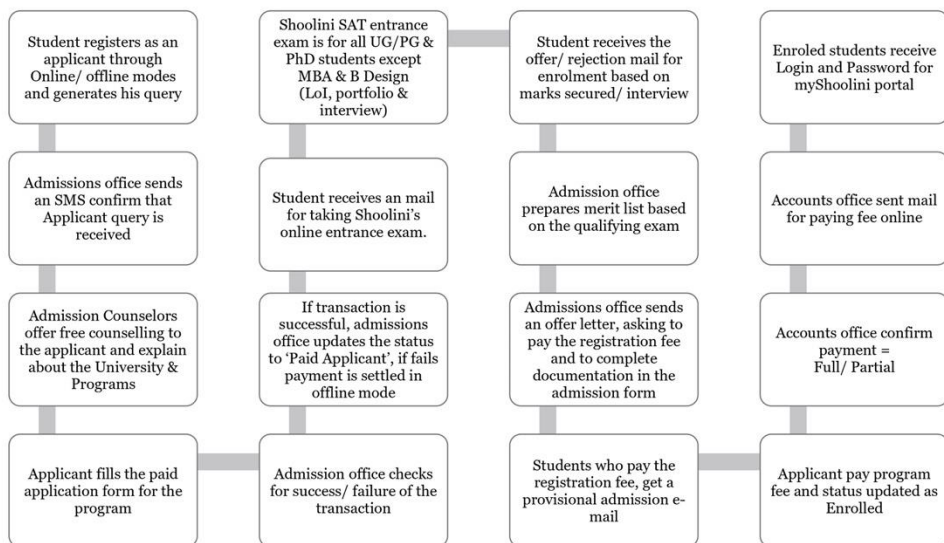
3. Admissions for the Academic Year 2023 are currently ongoing. You may receive a firm Offer of Admission even before Board exams if you submit one of the following entrance exam scores:

NEET/ JEE / CLAT

SAT

4. Once you meet the eligibility criteria, the department will send you a Letter of Enrolment. Upon paying the First-Semester Fee, you will be enrolled in your chosen course and be a part of the University.

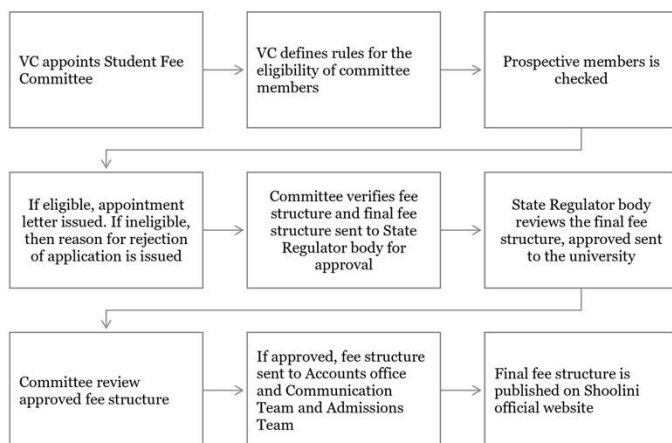
## Student Registration Process



## Shoolini Scholarship Process



## Fee Structure Approval Process



## 3.4 Grading System and Policies

### 3.4.1 Evaluation Process

Shoolini University follows a semester system, including continuous evaluation through surprise tests, assignments, quizzes, mid-term examinations, and end-term examinations.

Research projects at both UG and PG levels are assessed.

Online examinations are currently adopted in the Computer Science discipline of the Faculty of Engineering and Technology and the School of Business Management. Expansion of this method to other faculties begins this academic session.

Continuous assessment accounts for about 20% of the course weightage. The methodology for this assessment is decided by the respective faculty members.

The Letter Grade Points are as Follow		
Grades		Grade Points
O	Outstanding	10
A+	Excellent	9
A	Very Good	8
B+	Good	7
B	Above Average	6
C	Average	5
P	Pass	4
F	Fail	0

The courses of Pharma, Agriculture and Law are graded as per their council's regulations.

### **3.4.2 Grading System**

Effective December 2013, the university employs a GPA/OGPA letter grading system. The assignment of these grades is based on relative grading but is not exclusively so, as the final decision rests with the faculty. The grading pattern is as follows:

### **3.4.3 Pharmaceutical Sciences Grading**

For Pharmacy students, the grading is different and is based on performance. Each student is awarded a letter grade per subject at the end of the semester. The grading system adheres to relative grading but depends on the faculty's discretion.

### **3.4.4 Examination Components and Policies**

Mid-term Examinations: Comprises two sessions: 1st mid-term and 2nd mid-term, covering approximately 30% of the weightage (exception being Pharmaceutical Sciences).

End-term Examination: Occurs at the semester or Quadmester's end, covering around 50% of the course weightage. In Pharmaceutical Sciences, the weightage is 70%/75%.

### **3.4.5 Transparency & Integrity**

Students have access to marks from term exams, quizzes, surprise tests, and assessments. Before result declaration, end-term exam answer sheets are shown to students.

In case of uncertainties, students can request re-evaluation.

UG and PG programs follow distinct re-evaluation processes.

### **3.4.6 Question Paper Integrity**

Question papers for UG and PG programs are set by the concerned teacher within a secure system. The papers are also checked and verified by the committee constituted for the qualitative set up of the question papers at School Level.

### **3.4.7 Grievance Redressal**

Students can request checking and re-evaluation of answer books, facilitated through the Dean of the respective faculty.

The purpose of the Student Grievance Policy is to provide equitable and orderly processes to resolve grievances by students against any employee of the Shoolini University. However, this policy does not include issues related to student's discipline, Academics like examination, absence from classes, etc.

#### **Definitions**

Grievance -- formal difference or dispute between a student and an employee about the interpretation and/or application of the Shoolini University non-academic policies and procedures, or provision of services, by members of the faculty or staff, that affects the student. A grievance may be based on one of the following claims: failure to provide services, arbitrary and/or capricious actions by an employee or administrative office; policy or procedure applied unfairly and/or in a different manner than it is applied to others; administrative error in the application of the policy or procedure.

Relevant Administrator-- Dean Students Welfare (DSW) and/ or respective Dean of Faculty will be the contact points for the student who will be responsible to provide requisite service in relation to grievance. The locus of grievance is with the unit where the service is delivered. Questions about the appropriate locus are resolved DSW and/or Dean.

#### **Statements**

A grievance differs from an appeal of an academic decision, as it deals with service issues and not the actual outcomes of course work. A student may file a grievance in the cases of an unresolved difference or dispute between themselves and the University (office or individual) related to services rendered or non-academic decisions. The policy covers matters outside the scope of other policies given from time to time by regulators/Shoolini University.

Complaints about sexual harassment and discrimination based upon protected class are addressed via the Discrimination Complaint Procedure (University Grant Commission (Prevention, prohibition and redressal of sexual harassment of women employees and students in higher educational institutions) Regulations, 2015); complaints about services related to disabilities are addressed through Rights of Students with Disabilities Policy (The Rights of Persons with Disabilities Act, 2016), complaints about student behavior are addressed through the Student Conduct Policy and Procedures and student academic appeals including grading are addressed through Academic Regulations (First Ordinance).

#### **Informal Resolution**

The student is strongly encouraged to seek informal resolution of a grievance by bringing it to the attention of the relevant individual, administrator, or office. An attempt at informal resolution should begin no more than 10 working days after the service or decision is rendered.

#### **Formal Grievance**

If the student is unsatisfied with the response, the student may make a formal, written grievance to the relevant administrator.

Any formal grievance must be submitted by the student within 20 working days after the service or decision is rendered. The student must state the nature of the grievance and the remedy s/he is seeking and describe any previous attempts to resolve the issue grievance.

The administrator reviews the situation and should provide a written response, including appeal information within 15 days of receiving the complaint, copying the primary mentor/academic advisor. Students will be informed if extenuating circumstances require additional time.  
<https://shooliniuniversity.com/student-grievance-policy-and-procedures>

### **3.5 Academic Integrity and Plagiarism Policies**

#### **3.5.1 Introduction**

Shoolini University is committed to upholding and championing academic integrity, ethical conduct, and genuine scholarship. We believe that an environment rooted in trust, mutual respect, and honesty is fundamental to fostering academic excellence. This policy aims to provide a comprehensive understanding of our stand on academic integrity and plagiarism, ensuring that all students and faculty are equipped with clear guidelines on maintaining ethical standards in their academic endeavours.

#### **3.5.2 Policy Objectives**

- To emphasize the importance of originality, proper citation, and responsible information usage in academic pursuits.
- To define and deter any form of academic misconduct.
- To equip the university community with the tools and knowledge to avoid plagiarism.
- To set out procedures for handling academic breaches with fairness and consistency

#### **3.5.3 Principles of Academic Integrity**

**Shoolini University strives to create an environment where:**

- Original thought is celebrated and encouraged.
- Mutual respect between students, faculty, and staff is paramount.
- Every individual takes responsibility for their academic behaviour, ensuring fairness and honesty.

#### **3.5.4 Definitions and Examples of Academic Misconduct**

Plagiarism: The unauthorized use or presentation of someone else's ideas, words, or work as one's own. This includes:

- Copying and pasting from sources without proper citation.



- Paraphrasing someone else's work without proper acknowledgment.
- Using unauthorized collaboration on projects or assignments.

**Cheating:** Using unauthorized resources or methods to gain an academic advantage.

**Fabrication:** Making up data, research, or sourcing.

**Facilitating Dishonesty:** Assisting someone else in any form of academic misconduct.

### **3.5.5 Plagiarism Prevention and Detection**

Shoolini University offers resources and training to students and faculty on internationally recognized citation styles, ensuring they understand how to properly cite and reference sources.

The university employs advanced plagiarism detection software that scans all academic submissions to detect potential breaches of the plagiarism policy.

### **3.5.6 Consequences of Breaching the Policy** **Depending on the severity and nature of the breach:**

- First-time minor offenses might receive a warning or require resubmission.
- Serious breaches may result in a failing grade for the assignment or the course.
- Repeated offenses can lead to suspension or even expulsion from the university.

### **3.5.7 Education and Awareness**

Shoolini University regularly conducts workshops and educational programs on academic integrity, ethical research, and plagiarism prevention.

These programs are designed to instil an understanding of the importance of originality and proper attribution, thereby reinforcing a culture of academic integrity throughout the university.

### **3.5.8 Conclusion**

Shoolini University's commitment to academic integrity and the prevention of plagiarism ensures that our students are not only well-educated but also ethically grounded. This policy, in conjunction with our educational initiatives, seeks to meld students into responsible scholars and future leaders, reflecting the university's mission to produce graduates of the highest calibre. Our rigorous stance on academic integrity serves to enhance our reputation on a global scale, ensuring our students are sought after for their integrity as much as their knowledge.

## 4 Research Opportunities

Getting involved in research as a student can be a rewarding and valuable experience. It allows students to explore their academic interests in-depth, gain practical skills, and work closely with faculty members and researchers. Below is a comprehensive guide on how student at Shoolini University, can engage in research and maximize the remarkable research opportunities provided by the university.

**Define Your Passions:** Identify your areas of interest and the fields you'd like to explore through research. This will help you narrow down potential research topics and mentors.

**Connect with Professors and Researchers:** If you have a topic of interest but haven't yet established connections with professors in that field, your initial task is to identify the faculty members who are actively engaged in research within that topic faculty profiles section on the university's website to find details about the research interests of faculty members affiliated with various departments. Once you have identified a potential mentor, approach the faculty member with a well-structured proposal. Convey your passion, objectives, and the unique value you bring to the research project. There is a chance that your professor might have an available research position. However, even if there is not an immediate opportunity, you can still benefit from valuable insights and networking. Do not hesitate to inquire about other faculty members your professor suggests connecting with if you are keen on pursuing research in the same subject area. This way, you can expand your possibilities and make the most of the resources around you.

**Research Grants and Funding:** Finding funding for your research can enhance your experience and provide resources for your project. Investigate internal funding options provided by the university for student research initiatives. Consult your department or research office for details. Students can also apply for grants from external funding agencies, aligning with their criteria and application procedures.

**Time Management:** Balancing research with coursework can be challenging. Develop effective time management strategies to ensure you're meeting your academic commitments while making progress in your research.

**Acquire Research Proficiency:** Depending on your chosen field, master research methodologies, data analysis techniques, and relevant tools. Capitalize on workshops, online resources, and courses that elevate your skill set.

**Showcase and Publish:** Participate in research conferences, poster sessions, and symposiums to present your findings. Consider submitting your article to reputable journals or collaborating with faculty members on peer-reviewed publications. These avenues will allow you to effectively communicate and share your valuable research insights within the academic community.

### 4.1 Introduction to Research at Shoolini University

Shoolini University, one of India's leading academic institutions, is renowned for providing outstanding research opportunities for both students and faculty. Rooted in a commitment to cultivating innovation and

rigorous scientific exploration, the university presents a spectrum of research programs spanning numerous disciplines.

Central to the university's research ethos is its avant-garde infrastructure and state-of-the-art laboratories. Significant investments have been made to establish world-class facilities, brimming with the latest instruments and technologies. This empowers scholars to delve into the depths of knowledge across a multitude of fields, from life sciences and nanotechnology to environmental studies and business analytics, ensuring a multidisciplinary research environment.

A cornerstone of Shoolini's research prowess is its esteemed faculty. Comprising a cadre of distinguished experts, many of whom are acclaimed internationally, these mentors are instrumental in sculpting the research trajectories of students. Their guidance, steeped in years of experience, fosters innovative thinking and equips students with insights to address multifaceted research challenges.

In the realm of collaborative research, Shoolini University stands unparalleled. By actively forging ties with industries, governmental bodies, and esteemed global universities, it provides a platform for students to embark on projects with tangible real-world implications. Such symbiotic collaborations not only amplify the research experience but also offer a unique vantage point, bridging academic pursuits with industry requisites and enhancing employability.

Additionally, the university champions the dissemination of research findings. By promoting publications and encouraging participation in national and global conferences, Shoolini offers its scholars a platform to spotlight their innovations, fostering academic exchange, and enabling them to forge invaluable connections within the global research community.

In essence, Shoolini University's unwavering dedication to research excellence, bolstered by its innovative facilities, eminent faculty, collaborative endeavors, and focus on global engagement, positions it as a nexus for budding researchers. As it continues its journey, the institution remains steadfast in its mission to inspire a new generation of scholars, propelling them to expand the horizons of knowledge and make lasting contributions to both science and society.

## 4.2 Undergraduate Research Opportunities

Shoolini University places a strong emphasis on undergraduate research opportunities, recognizing the transformative impact of engaging students in research from the initial stages of their academic journey. The university offers three distinct ways through which undergraduate students can involve themselves in research:

**Summit Research Program:** Shoolini University has initiated research focussed undergraduate programs, named as Summit Research Program (SRP). In this program students are recruited through a rigorous interview process and only a limited number of students are admitted who are passionate about research as a career option.

**Direct Research Participation:** One way to get involved in research at the university is by collaborating with a faculty member on their ongoing research projects. This hands-on involvement allows students to contribute to real-world research while learning from experienced researchers.

**Independent Projects:** Alternatively, students can undertake their own independent research projects under the guidance of a faculty mentor. In this approach, students have the autonomy to formulate their research questions and methodologies, enabling a more personalized exploration of their chosen field.

**Summer Research Internships:** Summer Research Internships at Shoolini University provide an exceptional platform for students to involve in dedicated research projects during their summer breaks. Summer Research Internships are designed to provide students with hands-on experience in their chosen field of interest. Participants have the chance to work closely with experienced faculty members, researchers, and industry experts.

### 4.3 Postgraduate and Doctoral Research Opportunities

Shoolini University provides an enriching environment that encourages postgraduate and doctoral students to become critical thinkers, problem solvers, and contributors to global knowledge. Here's a detailed overview of the research opportunities available:

**Advanced Research Projects:** At Shoolini University, postgraduate and doctoral students have the unique opportunity to engage in advanced research projects. Students are encouraged to immerse themselves in specific research areas that directly confront current challenges and explore emerging trends.

**Research Assistantships:** The university places a strong emphasis on collaborative research through research assistantships. Postgraduate and doctoral students have the chance to work closely with esteemed faculty members on ongoing research projects. This collaboration provides students with a hands-on learning experience, enabling them to apply theoretical knowledge to real-world scenarios.

**Ph.D. Fellowships:** Shoolini University offers a Ph.D. fellowship program that not only encourages exploration and innovation but also contributes significantly to the advancement of global knowledge. Doctoral candidates are given the freedom to choose research topics that align with their interests and expertise. The university provides a conducive ecosystem for Ph.D. scholars to conduct in-depth research, access state-of-the-art facilities, and engage with a vibrant community of researchers.

### 4.4 Interdisciplinary Research Centres

Our interdisciplinary centres allow researchers to collaborate across different academic domains, fostering innovation. Here is an overview of the interdisciplinary centres at Shoolini University:

**Centre for Biotechnology Research:** The Centre for Biotechnology Research at Shoolini University stands as a dynamic hub of innovation and scientific exploration in the field of biotechnology. This centre was set up to promote interdisciplinary collaboration among researchers, students, and experts who share a passion for advancing biotechnological knowledge and its applications.

**Centre for Sustainable Development:** The Centre for Sustainable Development at Shoolini University is committed to making a significant and measurable impact on the biodiversity, environment, and socio-economic development of the Himalayan region. The centre aims to contribute to the sustainable growth

and well-being of the Himalayan communities and ecosystems through extensive research, collaborative partnerships, and practical initiatives.

**Centre for Artificial Intelligence and Robotics:** The convergence of AI and robotics is explored comprehensively at the Centre for Artificial Intelligence and Robotics. The centre aims to develop intelligent systems and robotic applications that impact fields as diverse as healthcare, manufacturing, and automation.

**Centre for Excellence in Visionary Learning Community of India (VLCI):**

The aim of the centre is to develop next generation Manufacturing Change Leaders through a unique teaching-learning process of classroom teaching and industrial training.

**Centre of Excellence in Himalayan Sustainability, Cancer Research, Yoga:**

Centre of Excellence in Himalayan Sustainability, Cancer Research, Yoga at Shoolini University is an interdisciplinary centre which bring together researchers across various disciplines to work on a broad range of research projects focusing on Himalayan sustainability, cancer, and yoga.

**Centre of Excellence in Energy Science and Technology**

This centre was set up with an objective to achieve excellence in research and technology development around sustainable energy.

**Research Centre on Nanotechnology**

This centre was established with the aim of enhancing advanced research in nanotechnology and creating state-of-the-art facilities for nanotechnology research.

**Research Centre in OMICS and Biodiversity Research**

The aim of the centre is to utilize omics – proteomics, genomics and metabolomics for understanding and sustainable utilization of biodiversity for drug discovery.

**Research Centre in Automobile Engineering**

Research Centre in Automobile Engineering was established in collaboration with Anand Automotive Systems to provides academic excellence in Automobile Engineering.

**Research Centre in Yoga**

The aim of the centre is to conduct traditional theoretical and empirical research studies and to convey the science behind traditional yoga system.

**Research Centre in Disaster Management and Climate Change**

The centre conducts interdisciplinary research that spans disaster preparedness, response, recovery, and mitigation strategies. Through innovative studies, it aims to uncover insights that contribute to more resilient communities and enhanced climate adaptation.

**Research Centre in Data Analytics**

The Research Centre in Data Analytics was set up with the aim of providing researchers the opportunity to develop a new generation of data analytics technologies for several applications.

#### **International Research Centre of Nanotechnology for Himalayan Sustainability**

This centre was set up to work on the development of nanomaterials to improve the lives of people in the Himalayan region. The major areas of research of this centre are water purification, waste management, cost-effective waste-to-energy conversion, greenhouse gas conversion into fuels, and advanced green photocatalytic water treatment.

#### **Centre for Legal Studies and Human Rights**

This centre was set up to undertake specialised research on legal topics and find viable solutions to socio-legal issues concerning society.

### **4.5 Collaborative Research Opportunities**

At Shoolini University, we recognize the immense value of collaboration in driving impactful research outcomes. Our institution is committed to fostering a culture of collaboration that extends across disciplines, institutions, and geographical boundaries. We actively encourage researchers to engage in collaborative research projects that leverage diverse perspectives and expertise.

**National / International Collaborations:** Shoolini University has established strong partnerships with several esteemed universities and institutions around the world. These national / international collaborations are the foundation of our joint research ventures, allowing us to pool together diverse perspectives, expertise, and resources. By transcending geographical limitations, our researchers engage in innovative projects that contribute to the global knowledge and address pressing challenges on a global scale.

**Industry-Driven Research:** Shoolini University has collaborated with industry leaders to address real-world challenges and develop practical solutions. These collaborative efforts have not only enriched the academic experience but also fostered the development of practical and impactful solutions that positively influence industries and communities. These collaborations also offer our students the chance to gain hands-on experience, working on projects that have the potential to revolutionize sectors ranging from healthcare to technology.

### **4.6 Research Funding and Grants**

At Shoolini University, we are committed to provide students with research funding and grants that empowers our students to pursue groundbreaking research initiatives.

**Internal Funding:** The internal funding program is designed to promote and enhance student participation in research and foster a culture of active collaboration between faculty and students in research. The initiative seeks to familiarise students with resources and facilities that may stimulate their enthusiasm to pursue research careers. Both students and faculty can apply jointly for these grants.

**External Grants:** Faculty / Students are also encouraged to apply for grants offered by external funding agencies, ensuring alignment with their specific criteria and application procedures. For detailed

information regarding ongoing calls for proposals from various funding agencies, students may refer to their respective department or research office. Our faculty provides comprehensive support to students in obtaining research funding from national and international grant agencies, reputable foundations, and influential corporations.

## **4.7 Research Workshops, Seminars, and Training**

**Regular Workshops:** Shoolini University regularly conducts hands-on sessions that focus on modern research tools, methodologies, and best practices. These workshops are designed to provide participants with practical experience using innovative research tools and techniques. By engaging in hands-on activities, participants can gain a deeper understanding of how to apply these tools to their research projects effectively.

**Guest Lectures and Seminars:** The university facilitates interactions between its students and leading experts from academia and industry. Guest lectures and seminars offer valuable insights into current trends, advancements, and practical applications within various research fields. These interactions allow participants to learn from experienced professionals and gain a broader perspective on their research areas.

**Research Methodology Training:** By providing comprehensive research methodology training, Shoolini University supports researchers in producing high-quality research outcomes. Research methodology training is an essential component of any research-oriented institution. This training equips researchers with the skills and knowledge necessary to conduct systematic and impactful research. It covers various aspects of research, including designing experiments, collecting and analysing data, interpreting results, and ensuring research ethics.

## **4.8 Research Publications and Journals**

We recognize that publishing research in esteemed national and international journals is a significant achievement that underscores the quality and impact of scholarly work. As part of our unwavering commitment to supporting our researchers, our experienced faculty members provide valuable insights to students during manuscript preparation, journal selection, and the peer-review process.

## **4.9 Intellectual Property and Patent Support**

Shoolini University has established a dedicated Intellectual Property Rights (IPR) Cell to ensure that students' innovative ideas are consistently nurtured, leading to a culture of continuous exploration and discovery. We are committed to providing an environment where innovative ideas are not only encouraged but also guided towards practical implementation. Through our IPR Cell and research-driven approach, we empower our students and researchers to make meaningful contributions to the advancement of knowledge and the betterment of society. IPR cell at Shoolini University provide comprehensive support in the following areas:

**Patent Filing:** Our IPR Cell assists researchers in navigating the complexities of patent applications, ensuring that their innovative ideas are properly protected and have the potential to make a lasting impact.

**Copyright Advice:** Our IPR Cell offers valuable advice and assistance to safeguard the creative works of our researchers through proper copyright protection.

**Commercialization of Research:** We believe in the practical application of research for societal benefit. Our IPR Cell is dedicated to assisting researchers in transforming their cutting-edge research into market-ready products or solutions.

## 4.10 Ethics and Compliance in Research

**Ethical Guidelines:** Shoolini University has firmly established a comprehensive Code of Ethics in Research that underscores our commitment to upholding the highest standards of integrity and accountability in academic research.

### Good practice in Academic Research

At Shoolini University, we highly value academic freedom, integrity, and responsibility. These principles form the foundation of ethical research practices within our institution. As a student engaged in academic research, it is crucial to adhere to the following good practices:

#### 1. Academic Freedom:

- Embrace the freedom to explore diverse ideas, theories, and perspectives within the bounds of ethical guidelines and institutional policies.
- Engage in open discussions and debates while respecting the rights and opinions of others.
- Safeguard the rights of fellow researchers to express their thoughts and ideas without fear of discrimination or censorship.

#### 2. Integrity in Research:

- Uphold honesty and accuracy in all aspects of research, including data collection, analysis, reporting, and publication.
- Attribute sources appropriately by citing references, acknowledging intellectual contributions, and avoiding plagiarism.
- Report findings transparently, even if they challenge initial hypotheses or preconceived notions.
- Refrain from fabricating, falsifying, or manipulating data to align with desired outcomes.

#### 3. Responsibility to Knowledge:

- Recognize the broader impact of research on society, striving to contribute positively to human understanding and progress.



- Ensure that research methodologies and outcomes are well-documented and reproducible by peers and future researchers.
- Exercise care in selecting research topics and methodologies that adhere to ethical, social, and environmental considerations.
- Address potential conflicts of interest or biases that could influence research objectivity.

#### **4. Respect for Intellectual Property:**

- Honor the intellectual property rights of others by obtaining proper permissions for using copyrighted materials and giving due credit.
- Seek authorization when reproducing, adapting, or distributing the work of other researchers, artists, or creators.
- Use software, datasets, and other resources in accordance with licensing agreements and legal regulations.

#### **5. Collaboration and Attribution:**

- Collaborate with peers, mentors, and other researchers in a spirit of mutual respect, acknowledging their contributions to the research process.
- Clearly define roles, responsibilities, and expectations when working in collaborative projects.
- Attribute the contributions of all team members appropriately in publications and presentations.

#### **6. Ethical Review and Compliance:**

- Obtain necessary approvals from institutional review boards (IRBs) or ethics committees when conducting research involving human subjects or sensitive data.
- Adhere to ethical guidelines and legal requirements relevant to the research domain, such as animal research, data privacy, and safety protocols.
- Prioritize the well-being and rights of participants, ensuring informed consent and minimizing any potential harm.

### **Publication Practice and Authorship, Notification, Archiving, and Depositing Copies of Research Publications with the Institutional Repository (IR):**

Disseminating research findings through responsible publication is a foundation stone of academic integrity. At Shoolini University, we prioritize the ethical aspects of publication practice and authorship to ensure the accurate representation of research efforts and contributions. The following guidelines are essential for maintaining the integrity of published work:

### **1. Responsible Dissemination:**

- Shoolini University encourages researchers to publish and share high-quality research results with the broader academic and scientific communities.
- Researchers should consider the potential impact and consequences of disseminating their work, both within the academic realm and beyond.
- The choice of journal should reflect the quality and significance of the research.

### **2. Authorship and Responsibility:**

- All authors listed on a publication are expected to have made substantial intellectual contributions to the research and the preparation of the manuscript.
- Each author must be able to defend the accuracy and integrity of the research presented in the publication.
- Researchers must ensure that they are listed as authors only on works in which they have genuinely contributed.

### **3. Transparency in Contributions:**

- Authors should accurately and clearly describe their individual contributions to the research and manuscript.
- A clear delineation of who contributed to various aspects of the research and writing process helps avoid misleading representations of contributions.

### **4. Avoidance of Honorary Authorship:**

- Shoolini University strictly disapproves of honorary authorship, where individuals are included as authors without making substantial contributions.
- Contributors who do not meet the criteria for authorship should be acknowledged for their distinct contributions, if applicable.

### **5. Archiving and Depositing Copies:**

- Researchers are encouraged to deposit copies of their research publications in the Institutional Repository (IR).
- Archiving in the IR ensures the preservation of research output for future reference and accessibility by the academic community.

### **The Ethics committee:**

To ensure the strict enforcement of our Ethical Guidelines, we have established an ethics committee that oversees research activities. The committee consists of experts from various fields, along with representatives from different disciplines, ensuring a comprehensive and impartial evaluation. This meticulous process guarantees that research conducted under our banner adheres to ethical standards, thereby safeguarding the rights and well-being of participants, society, and the broader scientific

community. The Ethics Committee is appointed by the Academic Council upon nomination by the Vice Chancellor.

### **Tasks of the Ethics Committee include:**

The Ethics Committee offers advice and guidance to the academic community of Shoolini University on all matters related to academic research ethics.

- The committee advises the Academic Council on ensuring compliance with the institution's 'Code of Ethics in Academic Research' across various academic activities.
- The Ethics Committee provides guidance and academic support to scholars regarding ethical issues connected to teaching, research, and other academic activities. Researchers can voluntarily request consultation on ethical aspects of their research.
- The committee ensures ethical compliance in research projects undertaken by scholars at Shoolini University on behalf of external parties.
- The Ethics Committee convenes at the explicit request of scholars who need an assessment of the ethical dimensions of their research project.
- The committee advises the Executive Committee and the Academic Council on policies concerning the acceptance of funds from specific sponsors of research.
- The Ethics Committee acts as an investigative and consultative body for any disputes related to research ethics and conduct.
- The committee makes recommendations to the internal Disciplinary Committee of Shoolini University regarding actions that should be taken as a result of investigations.

### **Identifying levels of violations of good academic practice**

**1. Minor Violations:** Minor violations are often due to inexperience or a lack of understanding of academic integrity principles. They typically lack dishonest intent and might result from:

- Weak procedures and methods that compromise research integrity unintentionally.
- Weaknesses that don't pose significant risks to subjects or policies. These violations reflect shortcomings rather than intentional misconduct. They call for further training and development rather than formal disciplinary action. Examples include:
- Minor plagiarism, like insufficient citation or paraphrasing without proper citation.
- Inaccurate claims to experience, qualifications, or contributions without major benefits.
- Inaccurate presentation of findings without deliberate distortion.
- Lack of diligence in declaring conflicts of interest. While not posing major risks, these violations might warrant institutional-level penalties or sanctions.

**2. Major Violations:** Major violations are more serious breaches of academic integrity that significantly impact a larger portion of academic work compared to minor violations. Examples include:

- Deliberate, reckless, or grossly negligent conduct that endangers research integrity.
- Conduct that may endanger subjects, the community, the environment, or the institution's research reputation.
- Major plagiarism includes Extensive paraphrasing or quoting without proper source citation, directly copying content without referencing, Using papers from (or parts thereof) essay banks, internet, or other sources without proper citations.
- Presenting another person's work as one's own, including designs or concepts.
- Repeated instances of previously identified minor plagiarism.
- Willful destruction of data, except when required by the legitimate data provider or when norms of privacy are endangered.
- Fabrication or falsification of data.
- Falsification of ownership.
- Defamation.
- Systematic misuse of licensed research resources' terms and conditions.
- Other systematic violations of third-party intellectual property rights.

## 4.11 Conclusion

Shoolini University takes immense pride in cultivating a nurturing environment for research, ensuring every budding researcher has the tools, guidance, and opportunities they need to flourish. Join us on this journey of discovery, innovation, and scholarly excellence.

## 4.12 Contact and Further Information

Details on how to get in touch with the research department, application procedures for various research programs, and links to further resources.

Feel free to reach out to us with any questions, concerns, or requests related to academic research, ethical guidelines, and research activities. Our dedicated team is here to provide the information and support you need for your research endeavours.

Dean Research & Development

Email: [deanRD@shooliniuniversity.com](mailto:deanRD@shooliniuniversity.com)

Shoolini University of Biotechnology and Management Sciences

Solan – 173212

Himachal Pradesh

**Links to further resources**

[Shoolini University Research Policy](#)

[Code of ethics in academic research](#)

## **5 Student Conduct and Responsibility**

### **5.1 Code of Conduct**

At Shoolini University, we are dedicated to fostering an environment of respect, collaboration, and academic excellence. This Code of Conduct outlines our expectations for student behaviour both within our campus—including hostels—and in any external settings representing the university.

Every Shoolini student is expected to be familiar with and adhere to both the regulations set forth by the UGC, other relevant Regulatory Bodies, and the University's own established guidelines. It's our collective responsibility to ensure a harmonious and productive academic environment. In essence, act responsibly and respectfully throughout your time here!

#### **Acts of Indiscipline Include but Are Not Limited To**

##### **5.1.1 Safety Concerns**

- Possession or use of firearms, lethal weapons, or knives with blades over four inches.
- Recourse to violence, threats, assaults, or any intimidating actions.

##### **5.1.2 Prohibited Activities**

- Consumption or possession of intoxicants.
- Engaging in gambling.
- Participating in or initiating ragging, bullying, or harassment.
- Engaging in strikes or hunger strikes.
- Boycotting official University events or activities.

##### **5.1.3 Disrespectful Behaviour**

- Using inappropriate language.
- Disrespecting faculty or staff members, on or off-campus.
- Disturbing fellow students during lectures or study sessions.

##### **5.1.4 Misuse of University Property & Resources**

- Damaging any part of the University's property.
- Unauthorized display or distribution of notices, leaflets, or posters without proper approval.
- Disturbances such as organizing unauthorized meetings or events.

### **5.1.5 Unlawful Activities**

- Breaking national or state laws or violating University regulations.
- Adopting unfair means in examinations.
- Molestation, eve-teasing, or verbal abuse.
- Physical harm towards any individual on campus.

### **5.1.6 General Misconduct**

- Hostile actions towards faculty members or university employees.
- Disrupting the class environment or any part of the University.
- Participating in strikes or demonstrations that might hinder University operations.
- Ignoring directives from the Student's Welfare Officer, Deans, Heads of Schools, or faculty members.
- Any other misconduct deemed inappropriate by the university's competent authority will also be considered an act of indiscipline.

Remember, these guidelines are in place to protect and ensure a rewarding experience for every member of our community. Let's work together to uphold the values and reputation of Shoolini University!

## **5.2 Disciplinary Procedures**

Ensuring a safe and conducive learning environment is of utmost importance to us. To maintain the integrity of our institution, certain disciplinary measures have been set in place for instances of misconduct. Here's a clear and concise overview of the procedures:

### **5.2.1 Individual Punishments**

**Authority:** Dean of the respective college.

**Action:** Withdrawal of any fee or other concessions.

Imposition of a fine as per rules from time to time.

### **5.2.2 Group Punishments**

**Situation:** When a group causes damage to university property, but individual responsibility cannot be ascertained.

**Action:** A fine up to double the cost of the damage caused.

If members of the group are from different colleges, the fine can be imposed by the Vice-Chancellor, based on the recommendation of the inquiry committee or respective Deans.

### **5.2.3 Reprimand of Record**

**Action:** Official warning for a breach of discipline.

Noted in the student's Permanent Record Card.

Does not appear on the outgoing transcript.

Third official warning results in Conduct Probation.

### **5.2.4 Conduct Probation**

**Situation:** Breach of university rules or any act of misconduct.

**Consequences:** Barred from representing the college/university in events.

Suspension from any student organization office.

Ineligibility for stipends, scholarships, or fellowships.

#### **Further violations:**

Can lead to rustication.

Second-time offenders will remain on Conduct Probation throughout their tenure and might face rustication for any further misconduct.

### **5.2.5 Suspension**

**Situation:** Serious misconduct such as grievous injury, molestation, or other severe infractions as deemed by the Dean.

**Consequences:** Immediate suspension from University and Hostel pending inquiry.

If found guilty, the student must compensate for missed lectures/ practical.

If acquitted, lectures/ practical may be rearranged, and absences can be condoned by the Dean.



### **5.2.6 Rustication**

**Situation:** Acts that tarnish the reputation of the University.

**Action:** Rustication for specified semester(s) by the concerned Dean.

Immediate eviction from the university and hostel.

### **5.2.7 Expulsion**

**Situation:** Grave misconduct that severely damages the university's reputation.

**Consequences:** Permanent expulsion from the university.

No possibility of readmission.

Noted in the student's Permanent Record Card and Transcript.

Information shared with all universities in India.

**Authority:** Vice-Chancellor, based on the recommendation of the respective Dean.

**Note:** Parents/guardians will be notified of any disciplinary action taken against their ward.

By maintaining discipline and upholding the principles of this institution, together we can create an atmosphere conducive to excellence in education and character.

## **5.3 Student Rights and Responsibilities**

### **Rights**

- 1.Right to an inclusive environment and be treated as an equal.
2. Right to feel comfortable and safe in campus.
- 3 Right to request for and receive plausible explanation of grades validated with relevant records.
- 4.Right to access all educational material, books, journals as per guidelines.
- 5.Right to learn as per individual capabilities.
- 6.Right to learn, progress and receive feedback about performance.
7. Right to express views and sentiments that do not hurt or provoke any religious or political sentiments.

8.Right to raise concerns related to academics, safety, hygiene etc.

Responsibilities of a student include but may not be limited to:

- 1.Following rules policies and guidelines of the university.
- 2.Respecting authorities and treating them accordingly.
3. Being respectful to beliefs and ideas that are different.
4. Maintaining good grades and 75 percent attendance.
5. Completely refraining from ragging and bullying or using derogatory words and language.
6. Encouraging others to accept differences of origin, background, and beliefs.
7. Respecting and ensuring proper usage of university property and resources.
- 8.Staying away from substances that cause mental and physical harm that could lead to a breakdown.

### **Hostel Residents**

#### **General Rules**

1. Students are required to be aware of all notices that are put up on the notice boards. Ignorance of University rules/instructions is no excuse.
2. Students are expected to act in such a manner that an atmosphere conducive to effective study prevails in the hostel.
3. The hostel wardens have full authority to check any room in the hostel at any time

#### **Rules Concerning Discipline**

1. All students are to report to the Assistant Warden/ Warden for attendance within the reporting time i.e. 8:30-9:00 pm. Students who fail to report beyond 9:00 pm shall be fined Rs 50 each time.
5. All students shall be in their rooms before 10 pm; any defaulter will be fined Rs 100 immediately.
6. All students are required to report to the mess-on-mess timings as displayed in each mess. Mess will close after the given time and no meal will be served to late comers.
7. Students are barred from coming to the mess in their night suits and short dress. All students must dress respectably.

8. Food is not allowed to be carried in rooms. It will be served in the room only if a student is sick on production of identity card and doctor's advice about bed rest.

9. No student can leave the hostel in mid semester. Hostel allotment is for one year.

10. During summer break, all students have to vacate the rooms and put their belongings in cloak rooms for limited quantity (2 packages only)

11. Hostel fee may be revised after one year.

12. Students have to clean their rooms themselves. Housekeeping staff will clean only their toilets/bathrooms.

13. Parents/Visitors are not to insist on entry beyond the designated area or visiting as it shall disturb other students. room

14. Possession, distribution, and consumption of alcoholic beverages, prohibited drugs, chewable tobacco, smoking in the hostel complex is not allowed. Defaulters can face rustication.

15. Unauthorized guests or outsiders in the hostel room are strictly prohibited. Any student keeping unauthorized person in her room will be liable to disciplinary action.

16. Hostellers desiring to go out of station must obtain permission from the warden concerned before going out. They shall apply to the Warden/Chief Warden stating reason of leaving and address of destination at least 24 hours in advance. Boarders who leave without permission shall be deemed to be missing and Police authorities and parents will be informed of such missing student.

17. Students shall not remain absent from their hostels during the nights between 9:00 pm to 7:30 am without prior permission of the warden. If anyone is doing so, his/her parents will be informed besides imposition of heavy fine.

18. Boarders will be personally/ collectively responsible for any loss or damage caused to the properties and equipment and other fittings in the common places, due to indiscipline.

19. Ragging is a cognizable offence, punishable under law and is strictly banned. Any student involved in any kind of ragging will be liable for immediate expulsion from the Hostel/ University.

20. Tampering with or alteration of electrical fittings is strictly forbidden and liable for action.

21. Allotment of rooms is done by Warden keeping several factors in mind. Hence no student shall occupy or interchange the room without permission by hostel warden. 22. Cooking food in the hostel room is strictly prohibited.

23. Hostellers are warned not to keep valuable goods in their rooms. Hostel management shall NOT be responsible for loss of such valuables.

24. While leaving the rooms, it must be ensured that the lights and fans are switched off failing which she will be liable to imposition of fines.

25. Use of electrical appliances such as heaters, rods are strictly prohibited.

26. No permission shall be given to a student to stay in the hostel after his/her even semester examinations are over.

27. The boarders must keep their rooms neat and clean. They have to use wastepaper baskets of their own in their rooms. Rooms will be inspected by warden periodically and those whose rooms are found dirty will be penalized.

28. Boarders shall treat their fellow boarders, University staff, hostel staff, mess staff with dignity and decorum.

29. The rooms should be checked in detail at the time of occupation by boarders.

30. Any damage to or loss of furniture or other fittings will be made good by the boarders at the time of vacating the accommodation.

### 31. Furniture

Hostel students are responsible for the safety of the furniture given to them. Damage to furniture or other fittings will be made good by concerned student.

32. Furniture is not to be removed from one room to another.

33. Gambling is not allowed in the hostel. Those found indulging in gambling will face a fine of Rs 5000/- or even expulsion from the hostel.

34. Students are not permitted to participate in any kind of political activities while enrolled in the University.

35. Names of students remaining absent without permission for three consecutive days shall be struck off the hostel rolls and their seat resumed.

36. Students shall maintain discipline and peaceful atmosphere in the hostel.

37. A student may be fined or expelled for any one of the following reasons

- Misbehaviour of any kind towards warden, assistant wardens or caretakers
- Harassing or teasing other students.
- Stealing or pilfering University property or that of other students or contractors
- Unruly conduct or rowdyism
- Writing on walls/doors or sticking of posters.
- Making noise or creating disturbance to others.
- Organizing unauthorized meetings on the premises of the hostel
- Breach of any of the hostel rules.

### 38. Celebration of Birthdays

- a. It shall be with prior written permission of the Dean Resident/Warden.
- b. It shall be held in a common place for not more than half hour, between 8:00 pm to 10:00 pm.
- c. There shall not be any kind of physical discomfort to fellow resident students.
- d. No outsider guest will be allowed.
- e. Violation of the rule shall attract penalty.

### 39. Visitor(s) and Guest(s)

- a. Male visitor shall see the residents of the girl's hostel only in the visitor's room during the specific hours.
- b. Female visitor (s) shall not visit male residents in their rooms.
- c. Guests are not permitted to stay overnight in any hostel. However, the university guest rooms if available, can be used on payment at prescribed charges for a period of maximum two nights.

## 5.4 Grievance and Appeal Procedures

The purpose of the Student Grievance Policy is to provide equitable and orderly processes to resolve grievances by students against any employee of the Shoolini University. However, this policy does not include issues related to student's discipline, Academics like examination, absence from classes, etc.

### Definitions

Grievance -- formal difference or dispute between a student and an employee about the interpretation and/or application of the Shoolini University non-academic policies and procedures, or provision of services, by members of the faculty or staff, that affects the student. A grievance may be based on one of the following claims: failure to provide services, arbitrary and/or capricious actions by an employee or administrative office; policy or procedure applied unfairly and/or in a different manner than it is applied to others; administrative error in the application of the policy or procedure.

Relevant Administrator-- Dean Students Welfare (DSW) and/ or respective Dean of Faculty will be the contact points for the student who will be responsible to provide requisite service in relation to grievance. The locus of grievance is with the unit where the service is delivered. Questions about the appropriate locus are resolved DSW and/or Dean.

### Statements

A grievance differs from an appeal of an academic decision, as it deals with service issues and not the actual outcomes of course work. A student may file a grievance in the cases of an unresolved difference or dispute between themselves and the University (office or individual) related to services rendered or non-academic decisions. The policy covers matters outside the scope of other policies given from time to time by regulators/Shoolini University.

Complaints about sexual harassment and discrimination based upon protected class are addressed via the Discrimination Complaint Procedure (University Grant Commission (Prevention, prohibition and redressal of sexual harassment of women employees and students in higher educational institutions) Regulations, 2015); complaints about services related to disabilities are addressed through Rights of Students with

Disabilities Policy (The Rights of Persons with Disabilities Act, 2016), complaints about student behaviour are addressed through the Student Conduct Policy and Procedures and student academic appeals including grading are addressed through Academic Regulations (First Ordinance).

### **Informal Resolution**

The student is strongly encouraged to seek informal resolution of a grievance by bringing it to the attention of the relevant individual, administrator, or office. An attempt at informal resolution should begin no more than 10 working days after the service or decision is rendered.

### **Formal Grievance**

If the student is unsatisfied with the response, the student may make a formal, written grievance to the relevant administrator.

Any formal grievance must be submitted by the student within 20 working days after the service or decision is rendered. The student must state the nature of the grievance and the remedy s/he is seeking and describe any previous attempts to resolve the issue grievance.

The administrator reviews the situation and should provide a written response, including appeal information within 15 days of receiving the complaint, copying the primary mentor/academic advisor. Students will be informed if extenuating circumstances require additional time.

<https://shooliniuniversity.com/student-grievance-policy-and-procedures>

## 6 Campus Resources and Services

### 6.1 Library

#### Procedure for Enrolment and Issuing of Books

1. A person eligible to be enrolled as member of the library will fill up and sign a membership registration form obtainable from the library and present the same duly signed and stamped by competent recommending authority to the Dean, library, and Information system/Librarian for enrolment as member of the library
2. Student members will come to the library personally to take books on loan.
3. Membership of a student will remain valid till he remains on rolls or get roll number for appearing in his final semester examination Le 2nd/ 4th/ 6th/ 8th semester. whichever is earlier and will be renewed at the beginning of each academic year.
4. Reference books are not issued, however, can be borrowed for consultation in the Library for Photostat etc.
5. The Dean/Librarian may recall any book from any member at any time.
6. The books are issued for ten days but in case a book is in great demand, the Dean/ Librarian may regulate the use of such a book in such a manner as he may consider proper.
7. A fine of Rs 5 per day per book will be charged for keeping the books beyond the prescribed time limit.
8. The loss of Library smart card should be reported immediately to DSW or IT Department. A duplicate card will be issued on payment of Rs 500/- for staff and Rs 200/ for students.
9. No book shall be issued on loan which, in the opinion of the Dean/Librarian is not in a condition be safely handled by the borrower.
10. Any borrower who losses/defects in any way damage a Library book, shall be liable to replaces the book or pay its cost as to be decided by the Librarian.
11. The library is accessible 24x7x365.

#### Re-issue of Books

1. The loan of books may be renewed at the discretion of the dean/ Librarian, provided the books in question are not in demand by other members. Similarly, the dean/ Librarian may allow the issue of additional number of books to meet his special requirement.
2. Before getting books issued, any mutilations or markings should be pointed out immediately by the number to the issue counter assistant and his initials be obtained there, otherwise the member shall be responsible for mutilations and markings discovered afterwards.

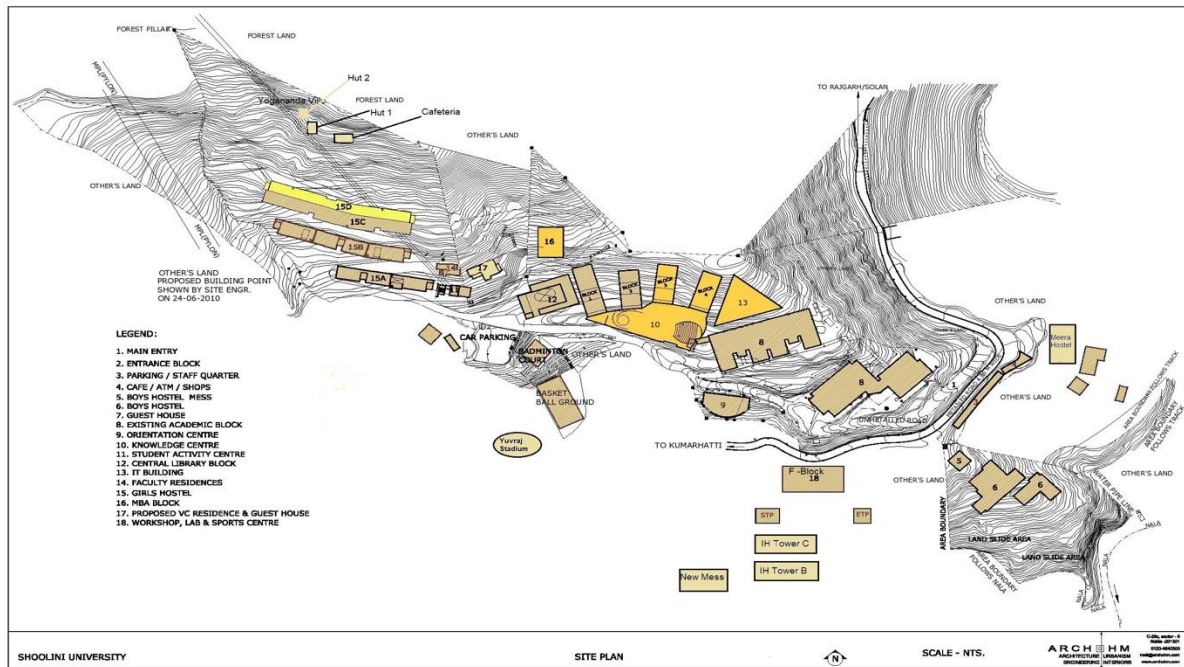
## **General Rules**

1. Readers shall maintain discipline and silence in the library. Uses of cell phones are prohibited.
2. Bringing cold drinks and any type of eatables are prohibited.
3. Internet facilities provided in the library may be used for consultation of course of study only.
4. Activities such as playing games or use of social networking sites or chatting is prohibited.
5. No person who is entitled or permitted to use the library shall mutilate, disfigure, deface by writing in the margins, by under-lining sentences, by marking passages or damaging a book, a periodical, or any property of the library, in any way.
6. A reader responsible for any damage caused to the reading materials or to any other property beside the penalty imposed upon him.
7. If book issued to a member are found mutilated at the time of return, he/she shall have to replace or pay the price thereof with a fine of Rs 100. Therefore, members are requested to check the books thoroughly before getting them issued.
8. No tracing or mechanical reproduction of any book, any map or manuscript shall be made without the expressed written permission of Dean/ Librarian.
9. The Dean/librarian reserves the right to suspend/ cancel the membership privilege of any member found misbehaving with the library staff or for any other indecent behaviour. Such a member is also liable to be expelled from the library.
10. Any infringement to the library rules will render a member's privilege of admission to the library, fit for cancellation.
11. In all other matters, the Dean/ Librarian shall have to take such action as he may deem fit.
12. The security guard/ Library attendant at the entrance and exit gate of the library is authorized to search the person or a reader if he suspects that he/ she is carrying unauthorized book or other reading materials.

## **6.2 Campus Map**

The campus map of Shoolini University offers a detailed representation of its vast and scenic grounds, serving as a reliable guide for students, faculty, and visitors alike. This intuitive map accentuates key areas such as academic structures, administrative blocks, student hostels, athletic facilities, libraries, and other vital amenities. With color-coded routes and prominent landmarks, navigation becomes a breeze, ensuring all can effortlessly find their way to their intended locations. This map embodies the university's dedication to fostering a well-organized and cohesive academic setting. It encourages both the university's community and visitors to relish the campus's tranquil beauty while conveniently accessing essential facilities.





## 6.3 Housing and Dining Information

Shoolini University prioritizes the well-being and security of its students by offering comfortable on-campus housing facilities. The university's hostels, meticulously maintained and fitted with contemporary conveniences, stand as a testament to this commitment. With distinct hostels for male and female students, the institution ensures an environment that's both safe and nurturing. Every room in these hostels comes equipped with fundamental facilities, complemented by round-the-clock security, reinforcing the promise of safety to its residents.

Beyond just accommodation, the university promises a rich culinary experience. The on-campus dining options deliver meals that are as nutritious as they are delicious, meticulously prepared to meet varied dietary requirements. Whether one has a taste for local flavours or an appetite for international dishes, the dining services cater to all preferences. More than just dining spaces, these areas are hubs for students to socialize, network, and forge friendships, enhancing the vibrancy of campus life and fortifying the sense of community.

The poster features a background image of various Indian dishes including rotis, a bowl of yellow chutney, and a bowl of orange chutney. In the top left corner is the Shoolini University logo, and in the top right corner is the GHS logo with the tagline 'Good Host Spaces'. The title 'MEAL TIMINGS' is written in large, bold, red capital letters across the top. Below the title, the poster is divided into two sections: 'MONDAY TO SATURDAY' and 'SUNDAY AND HOLIDAY'S'. Each section contains a table of meal timings. A small circular icon with a list symbol is located in the bottom right corner of the poster.

**Shoolini University**

**GHS**  
Good Host Spaces

# MEAL TIMINGS

MONDAY TO SATURDAY	
<b>BREAKFAST</b>	<b>07:45 AM - 9:30 AM</b>
<b>LUNCH</b>	<b>12:00 NOON - 2:30 PM</b>
<b>DINNER</b>	<b>07:30 PM - 9:15 PM</b>

SUNDAY AND HOLIDAY'S	
<b>BREAKFAST</b>	<b>08:15 AM - 10:00 AM</b>
<b>LUNCH</b>	<b>12:00 NOON - 2:30 PM</b>
<b>DINNER</b>	<b>07:30 PM - 9:15 PM</b>

**How can my parents book a stay at the University hotel/ guest-house/ cottages?**

You or your parents can drop us an e-mail at '[studentsupport@shooliniuniversity.com](mailto:studentsupport@shooliniuniversity.com)' with the following details:

- Student name & course
- Names of people coming for stay
- Date of arrival & Date of checkout
- Number of rooms required
- Contact Number

### Where can my parents/ relatives stay when they visit me?

As a University Policy, we do not allow parents to stay inside the hostels. Shoolini has a modern hotel (Shoolini Chalet), and wooden cottages (Yogananda Ville) inside the campus. These are available for the visitors at nominal charges.

Accommodation	Rates Per Night
Shoolini Residences	Rs. 1500 (excluding food)
Chalet Suite	Rs. 2000 (excluding food)
Chalet Room	Rs. 1500 (excluding food)
YV Hut-1/ Hut -2 (luxury)	Rs. 3500 (including all meals for two persons)
YV Mud Hut (luxury)	Rs. 2500 (including all meals for two persons)

### Details of Dean Resident, Chief Warden, Head Warden and Wardens of Girls and Boys Hostels

Brigadier S D Mehta	Dean Resident	9218301033
Dr Neeraj Gandotra	Chief Warden	8580527369
Dr. Shubhra Mishra	Head Warden	7428625425
Ms. Anupma Chandel	Warden, Girls Hostel Block A	9882467419
Ms. Bhawna Diwan	Warden, Girls Hostel Block B	8894072121
Dr. Radha	Warden, Girls Hostel Block C	8628878791
Dr. Priyanka Chauhan	Warden, Girls Hostel Block D	8219186973
Dr. Lalit Sharma	Warden, Aryabhata Hostel	9418175744
Mr. Rohan	Warden Rabindra Nath Tagore Hostel	7590072116
Mr. M L Sharma	Warden New Boys Hostel Block - C	8580657110
Dr. Sanchit Thakur	Warden New Boys Hostel Block - B	8894912972
Dr. Rohit Jasrotia	Warden Shoolini Residence	9149886631
Mr. Rishabh Shyam	Warden Student Village	9857772581

### Emergency Number

Main Security Office – 9218301036

### Health Centre:

Mr. Parveen Kumar – 9318003288

Ms. Kamlesh - 9872312944

## 6.4 Library and IT Services

Shoolini University is committed to providing its students and faculty with top-notch Library and IT Services, enriching their academic journey and research endeavours. The university's Library is a treasure trove of knowledge, housing an extensive collection of books, journals, research papers, and e-resources across diverse subjects. The well-organized and user-friendly space offers a conducive environment for learning, research, and self-study. Knowledgeable and friendly librarians are readily available to assist users in locating relevant resources, providing guidance on research methodologies, and promoting information literacy.

Complementing the rich resources of the library, the university's IT Services offer cutting-edge technology and robust digital infrastructure. Equipped with modern computing facilities and high-speed internet, students and faculty can explore a wide range of online resources and engage in seamless virtual learning experiences. The IT team ensures the security and reliability of digital platforms, safeguarding sensitive data and enabling a smooth flow of information across the campus.

Moreover, the university continually invests in the latest software and technology, facilitating innovative teaching methodologies and research practices. The integration of digital tools enhances the academic experience, encouraging creativity and critical thinking among students.

The Library and IT Services at Shoolini University work hand in hand to support the academic and research needs of the university community. Together, they contribute significantly to creating an enriching and dynamic learning environment, empowering students and faculty to excel in their respective fields of study and make a positive impact in the world.

### E-Resources:

EBSCO
Jstor
Amazon's Kindle
NDL (National Digital Library)
Manu Patra
SCC

<b>No of E- resources:</b>
e-books 2,50,000
e-Journalws 10,000
e-books 1400
e-Journal 4500
2 million e -books

Untimted e-Books
e-books 25
e-Journals 80+

**No. of Print Books - 48,220**

**Printed magazines - 26, Printed Journals - 13**

**Newspaper - 13**

**Hours of Operation – 24x7**

<b>Services Offered</b>
Laptop/ Kindle facility
E- Resources
Reading Room
Reprography
Ultraviolet for Disinfection of Books
OPAC System for finding books
Vending Machine for Cold drinks & Snacks
Coffee/Tea
Yogananda Theology Centre for meditation
Wi-Fi access
Mobile App EBSCO
Checkout facility in shoolini App

**Contact No - 9218301019**

## **6.5 Health and Counselling Services**

Shoolini University recognizes the paramount importance of both physical health and mental well-being for its students and staff. In pursuit of creating a nurturing and supportive campus environment, the university offers comprehensive Health and Counseling Services.

For physical health needs, the university's Health Services are at the forefront, ensuring accessible medical care for every member of its community. These services, powered by skilled medical professionals and a fully equipped health center, cater to a range of needs from primary healthcare to emergency responses. To instil a proactive approach to health, the university conducts regular check-ups and spearheads awareness campaigns focusing on preventive healthcare, encouraging students to adopt and maintain a healthy lifestyle.

Understanding the challenges of academic life and the emotional turbulences it might trigger, the university also prioritizes mental well-being. Through its Counseling Services, students find a haven where they can voice their concerns, anxieties, and emotional challenges, assured of confidentiality. Expert counselors are on hand to offer both individual and group counseling, assisting students in navigating stress, anxiety, and other mental health challenges. Additionally, the university organizes workshops and seminars on subjects like mindfulness and coping mechanisms, equipping students with skills to manage university life's pressures.

By seamlessly integrating Health and Counseling Services, Shoolini University adopts a holistic approach towards student welfare. Addressing both physical and psychological needs, the university ensures its students are well-equipped to excel both academically and personally. This unwavering commitment symbolizes the university's vision: to create an inclusive campus where every individual feels valued and is inspired to realize their utmost potential.

**Following facilities are provided in the health Centre: -**

- 1) Patients check up
- 2) Patients dressing
- 3) Rapid antigen test
- 4) Hematology test
- 5) Biochemistry test
- 6) Lipid profile test
- 7) Serology test
- 8) Urine examination test
- 9) liver function test
- 10) Refer patient for Hospital
- 11) Check-up 24x7 (Boys Hostel and Girls Hostel)
- 12) Ambulance 24x7 available
- 13) Patients admit facility.

The health Centre has medical consultation room, dispensary, dressing room and a pathology lab. The beds in the Centre are supplied with oxygen cylinders and oxygen concentrator.

**Emergency/ ambulance number 9318003288**

MMU Emergency number 8628954500

**Health Centre Opening Hours-**

Time -9:30 AM – 5:30 PM

Days -Monday to Saturday

**Staff Available-** Doctor from Medical College (MMU)

Nurse Ms. Kamlesh
Technician Mr. Praveen
Orthopaedist On call -Dr. Mohit Gupta
Doctor Visiting Hours- Wednesday & Friday 10 AM – 4 PM

**Contact Numbers-**

Nurse 9872312944
Technician -9318003288
Orthopaedist -9805030304
Doctor- 8427187630

**Facilities Available-** 3 Beds, 2 Ambulance, 1 Stretcher & 1 Diagnostic Lab

**After 5:30 PM-** Nurse Available in Girls Hostel & Technician Available in Boys Hostel

**Services Available-** Medicines, Dressing, Emergency, Blood Testing (LFT, KFT, Lipid Profile, sugar, urea, uric acid, creatinine, HB, RBC, TLC, DLC, ESR, eosinophil, platelet), Urine test, Stool test, Semen test, etc.

## 6.6 Career Services

Shoolini University goes beyond mere academic excellence, ensuring students are primed for success in their chosen careers. Central to this mission is the robust Career Services department, designed to guide students in carving out meaningful and rewarding professional paths.

Guided by a dedicated team, the Career Services department offers students the insights and resources to discern their unique strengths, interests, and career objectives. Through one-on-one counseling sessions, students not only gain clarity on potential vocations but also develop actionable roadmaps to reach their desired destinations.

To make students market-ready, the department organizes a plethora of workshops and seminars. Topics range from crafting compelling resumes and mastering interview techniques to the nuances of professional networking. By offering mock interviews and assessment drills, students receive valuable feedback, fortifying their confidence for real-world job applications.

The university further strengthens the bridge between academia and industry by hosting job fairs and placement initiatives. These events draw top-tier companies keen on tapping into the university's pool of talented students from varied disciplines. It's a golden opportunity for students to engage directly with industry stalwarts, laying the groundwork for potential job placements. Moreover, Shoolini University emphasizes practical exposure, promoting internships that provide students with hands-on experience and vital networking opportunities. Through strategic partnerships with renowned organizations, students witness firsthand the intricacies of their chosen fields.

One of the department's most invaluable resources is its vast alumni network. Current students benefit immensely from the experiences and guidance of accomplished alumni. This mentorship provides a critical link between classroom learnings and the demands of the professional realm.

In essence, Shoolini University's commitment to career progression ensures its graduates stand out in the competitive job arena. By offering a blend of individualized guidance, industry collaborations, and an ever-expanding network of opportunities, the university stands as a beacon for students, illuminating their paths toward fruitful and satisfying careers.

Our team of experts, under the leadership of a Director Placement and Associate Director, is fully dedicated to offering comprehensive support in placement and career development.

Mentored by our Vice-Chancellor and dedicated trustees, we have fostered enduring relationships with industry leaders and renowned corporations such as March, HUL, TATA AIA, KPMG, Eclerx, ICICI Bank, Genpact, Novo Nordisk, IBM, Fitelo, Dr. Reddy's, Trident, and HCL, among many more. These organizations consistently choose our Shoolini Campus as their preferred recruitment destination year after year.

One of our primary responsibilities is the appointment of dedicated placement coordinators for each academic program. They work closely with the Placement and Career Development Cell to ensure seamless placement processes.



Internship opportunities are another cornerstone of our commitment to our students' success. We diligently secure high-quality internships for our students within reputed Indian Multinational Corporations (MNCs) and innovative start-ups. These internships provide invaluable corporate exposure, enabling our students to benefit from the mentorship of accomplished business leaders. This experience empowers our students to make informed career choices and prepares them to excel in their chosen professions.

We maintain a proficient training team that diligently prepares our students for the challenges of the job market. Our innovative skilling program, known as SPRINT (Skill Progression through Rapid Intensive and Innovative Training) has consistently yielded exceptional results. SPRINT is meticulously designed to enhance our students' skills and capabilities. It comprises comprehensive subject matter sessions complemented by technical and soft skills training, resume building sessions, all delivered through highly interactive methods. These modules facilitate a smooth transition from the classroom to the boardroom, equipping our students with the requisite skills and mindset for success. With a well-balanced focus on both hard and soft skills, our students are poised to become accomplished professionals in their chosen fields.

## **6.7 Accessibility and Disability Services**

Shoolini University stands firmly in its commitment to inclusivity, ensuring all students, regardless of their abilities, are given equal opportunities to flourish. Central to this endeavour is the university's Accessibility and Disability Services (ADS), a beacon of support and advocacy for students with disabilities.

Understanding that each student is unique, ADS takes a personalized approach. By engaging in dialogue with students with disabilities, the team discerns their individual needs and provides tailored accommodations. This might entail modifications like accessible classroom layouts, the provision of assistive technology, note-taking support, or extended examination durations.

Education, however, goes beyond academics. Recognizing this, ADS prioritizes sensitizing the larger university community to the challenges faced by students with disabilities. Through a series of workshops, seminars, and campaigns, the department fosters a more compassionate and understanding environment, challenging stereotypes, and dispelling misconceptions.

A holistic approach to inclusion also demands that physical spaces be accommodating. Shoolini University, in tandem with ADS, has been proactive in revamping its infrastructure. Students now find an increasingly accessible campus, complete with ramps, elevators, and thoughtfully designed pathways, ensuring they can navigate the university with ease and independence.

Beyond academics and infrastructure, ADS serves as a comprehensive guide, assisting students with disabilities in accessing various university services and fully immersing themselves in campus life. By acting as a conduit between these students and the broader resources of the university, ADS ensures a well-rounded, enriching experience for every student it supports.

Shoolini University's unwavering focus on accessibility underscores its broader ethos of diversity and inclusion. Through its dedicated services and proactive initiatives, the university not only empowers students with disabilities but also cultivates an atmosphere of mutual respect and understanding. This inclusive vision not only uplifts individual students but also elevates the collective consciousness of the entire university community.

## **Campus is easily accessible by people with disabilities.**

Ensuring campus accessibility for people with disabilities is crucial for inclusivity and equal opportunities. Shoolini University achieves this through thoughtful design and infrastructure. The campus features ramps, elevators, and wide pathways to facilitate wheelchair users' movement, along with handrails, non-slip surfaces, and tactile indicators for those with mobility challenges. Digital accessibility is also prioritized, with the university's website, online resources, and educational platforms adhering to accessibility standards, ensuring compatibility with assistive technologies. Accessible course materials, such as text-to-speech options and alternative formats, are provided. Shoolini University promotes disability awareness and sensitivity among staff, faculty, and students, offering training programs and workshops to raise awareness and teach effective communication techniques. By embracing universal design principles, the campus creates an inclusive environment that caters to diverse needs. Easy accessibility empowers disabled individuals to fully participate in academic, social, and cultural aspects of campus life, fostering a more equitable educational experience for all.







## 6.8 Mentor Mentee Scheme

### Mentoring for students

As per the decision taken with the Deans under the chairmanship of Hon'ble Vice Chancellor it was decided that Mentors will be allocated to UG and PG students. Deans of the respective Faculties should allot students to the faculty members who will act as Mentors. Each faculty member should not have more than 20 students with them. The mentors will counsel students on academic and non-academic issue as required in order to take care of the overall growth and development of students.

Objectives of the student mentoring program:

- Providing assistance in academic and non-academic matters.
- Motivate and help students focus to achieve their learning objectives that increases their academic performance.
- Provide students with guidance, encouragement, and counsel regarding their imminent life as students, their mental and emotional well-being.
- To listen to the concerns of students with patience and supporting them to resolve their issues.
- Encouraging and instigating students' interest and enthusiasm in academics, cocurricular and extracurricular activities.

Mentors' responsibilities:

- To give them profession guiding and career counselling.
- To give them individual directing and personal counselling.
- To help them for any sort of trouble in their educational plan and curriculum.
- To make arrangement of therapeutic training and remedial coaching for them.
- To consistently uphold them as and when required. Mentees' responsibilities:
- To initiate contacting with the mentor and should arrive for mentoring sessions prepared and on time.
- To set the conversation's agenda with the mentor and provide a quick update on progress on the last discussion at the start of each session.
- To communicate his or her opinions, worries and professional ambitions with the mentor to make mentor familiar with the context.
- To ensure punctuality and demonstrate respect and responsibility.
- To make sure meetings happen and issues are discussed without any hesitation.

## 7 Student Life and Activities

### 7.1 Student Organizations and Clubs

Shoolini University believes in a holistic approach to education, recognizing that learning extends beyond the classroom. Our Student Organizations and Clubs offer opportunities for students to explore their passions, hone leadership skills, and build lasting relationships. By participating in these groups, students not only enrich their university experience but also contribute to the vibrant campus culture

#### 7.1.1 Types of Organizations and Clubs

CLUBS AT SHOOLINI UNIVERSITY				
Sr No.	Club Name	Description	Club Head	Contact Number
1	<b>SHOOLINI CREATIVE STUDIO</b>	Shoolini Creative Studio is the performance arts and theatre ensemble of Shoolini University, Himachal Pradesh. Its intention is to build a cultural community of visionaries, actors, film makers, artists, musicians, dancers, poets, architects and designers in Shoolini University. It organizes mega theatre productions.	Sujit Nandi	86387 30961
2	<b>RAAG RANG CLUB</b>	“Connectens corda cum musica.” At Raag Rang, we believe in connecting hearts with music. Music is universal. It heals, nourishes, protects, enriches and soothes the hearts of everyone it touches.	Amit Ghatta	7807023780
3	<b>SATRANGI STROKES</b>	Satrangi Strokes is the artistic face of Shoolini. The club aims at igniting the flames of artistry and encouraging young minds to live life with an imaginative approach.	Aman Sharma, Asavari Kapoor	82788 22740, 9772867233
4	<b>SAKSHAM DANCE CLUB</b>	The Dance Club boosts the morale of students and highlights their talent for dance and creativity and explores their artistic side.	Lavanya, Harsh	9634885707, 8504855602
5	<b>CINEDICATE - THE FILMMAKING CLUB</b>	Cinedicate is a community of film enthusiasts who are dedicated to creating short films and documentaries that raise awareness about important social issues.	Nihit Srivastava	9870134210

		Students will have the opportunity to collaborate with other like-minded students, learn new filmmaking techniques, and develop their skills as filmmakers.		
6	<b>HIMSHOBLA CLUB</b>	HIM means Himalaya and SHOBLA means beauty. Himshobla is a club representing Himachali culture. This club was basically formed to preserve and promote our culture.	Sahil Mehta	8628996778
7	<b>LOUDSPEAKERS CLUB</b>	Loudspeakers is a club which teaches its members communication, public speaking, anchoring and builds their self-confidence through the enhancement of public speaking skills.	Gautam Sukhija	9333441313
8	<b>PRISM CLUB</b>	PRISM (Preservation and Promotion of Rights, Identity, Gender and Sexuality through Manoeuvring and Motivating LGBTQIAP+ Youth) aspires to create a safe space for and to educate people about the LGBTQIAP+ community. The club aims to provide a comfort zone for students to freely talk about their struggles and experiences, and to help them accept and be open about who they are.	Ananya V.	8382966815
9	<b>GENOMAGE CLUB</b>	'Genomage: The Biosciences Society of Shoolini University' is a trainee-led initiative, aiming to create a thriving community of biotechnology, biosciences and biomedical enthusiasts where knowledge is shared across all levels and like the field of biology itself, we continue to grow and evolve.	Prathama Das	9999607336
10	<b>BODH QUIZ CLUB</b>	Bodh - Shoolini University's Quiz Club is a student-run club dedicated to quizzing. The motto of this club is to harvest inbuilt qualities such as the quest for knowledge and to ignite one's inquisitiveness for things happening around.	Roohani	8146310129
11	<b>ANIMAL LOVERS CLUB</b>	Animal Lovers' Club is a non-profit student initiative club formed at Shoolini University, Solan, which focuses on feeding, healthcare, adoption and overall welfare of stray	Lokesh Rawat	9520222960

		animals in proximity.		
12	<b>YCC CLUB</b>	YCC endeavors to represent the youth community in the country, from all fields of society, under a single non-political and non-governmental umbrella, to help all effectively communicate to the society, bring in leadership movement and help each other in becoming good and responsible citizens of the country. It focusses on written and verbal communication	Rhea	9041366999
13	<b>LIT WITZ CLUB</b>	Litwitz brings together all those who love to play with words. Poetry is an art, and a poet is an artist and that's where Litwitz comes in, to bring the art and the artist together to feel the emotion with words. All the poets, the writers and all those who love to be the "Mehfil ki Jaan" are welcome.	Kavita Kundlas	8627816411
14	<b>THE RED TABOOS CLUB</b>	Our club is dedicated to creating a safe and open space to discuss menstruation, hygiene, and related issues without any stigmatization. We strive to educate both women and men about menstrual health and hygiene practices, aiming to break down barriers and misconceptions that surround these natural bodily processes,	Jaswitha	8125313943
15	<b>CUISINE CLUB</b>	This club represents the love for food, for all the foodie people out there. It is basically a common ground to share the taste of marvelous things that we eat in our daily lives.	Manan Monga	8847257504
16	<b>DRISHYAM CLUB</b>	Drishyam Photography Club is a platform that helps photography enthusiasts to enhance their skills in capturing our wonderful world on film.	Harsh Chourasiya	6284097933

17	<b>SANCHAY: MATHS CLUB</b>	Sanchay aims to focus on heightening the application and the impact of not just Mathematics but also other interdisciplinary fields of STEM. It attempts to do so by breaking the conventions of typical classroom topics and expands the horizon of knowledge by questioning the paradoxes.	Anshika Jain	9818322264
18	<b>VISION THREADS</b>	“The Shoolini VISION THREAD club” aims to give an amazing platform where the members will help you to grow the hidden talent within you. As far as the name “The vision thread” you can imagine the club will go along with handicraft work that include different ideas i.e. thread work, craft, stone painting and different forms of art etc. There is also an entrepreneurial aspect to the club. So, make your free time a funtime with us and enhance your skills and personal growth. Hope you will join the club to bring colors to your imagination.	Mansha raj	7015314131
19	<b>ENVIRONMENT AND SUSTAINABILITY CLUB</b>	Our club strives to raise awareness about critical environmental issues such as biodiversity conservation, pollution, climate change, and the Sustainable Development Goals (SDGs) set by the United Nations. We believe that collective action is the key to addressing these challenges. Through education, awareness initiatives, and hands-on projects, we aim to build a sustainable world.	Nandini Rai	7250035499
20	<b>HACKHOUND (CYBERSECURITY CLUB)</b>	Welcome to HACKHOUND, the ultimate cybersecurity club! Immerse yourself in the world of hands-on learning as we dive into practical exercises, engaging Capture the Flag (CTF) challenges, and real-world application of your skills. From dissecting code to cracking encrypted puzzles, HACKHOUND is your playground for honing your cybersecurity prowess. Join us to transform theoretical knowledge into impactful execution and become a skilled cyber defender in this dynamic	Vikas chouhan	7357303139



		and exhilarating club.		
21	<b>SKATEBOARDING CLUB</b>	A group of people who share mutual captivation towards skateboarding. We learn new skateboarding tricks together and have fun skateboarding together.	Aman Mehta	9389184539
22	<b>VENTUREANIUM</b>	A group of people come together and form a community where we discuss new startup ideas and then provide mentors to them. This also creates more connections with the business world	Nimisha	8826197105
23	<b>ARCADIA CLUB</b>	Arcadia is a club formed by the students of the Department of Psychology at Shoolini, which aims at promoting emotional well-being as well as mental health and to educate people about various kinds of prevailing ailments. By doing so, we will not only be able to help the needy but also provide a platform to spread awareness about mental health.	Aatish Gaurav	7783046161
24	<b>WEEB CLUB</b>	Join us at WEEB: Western Enthusiasts of Eastern Blessings, where we celebrate East Asian cultures, beliefs, and the vibrant world of anime. Explore cultural workshops, anime screenings, and engaging events that bridge the gap between traditions and contemporary entertainment.	Anirudh Revo	7380534123
25	<b>KULT</b>	Our moto is to motivate everyone accepting healthy fashion norms, and to design and promote sustainable fashion, we will be organizing, shoots and ramp shows, and workshops for those who want to learn, for joining you have to pass an audition and an interview, after that, we'll kook something in the kult	Nishant	8955591445

26	<b>Mountain Rangers</b>	This club is made for Hiking and trekking over the weekends. The aim of this club is to get students out of their comfort zones and enhance their physical and mental capabilities and to ensure a peaceful and enjoyable connection with nature.	Vipul Tomar	9816156129
27	<b>Pedals Cycling Club</b>	A club that gives you the ideal combination of fun and fitness is our newly launched Pedals Club. It provides the ideal platform for students and faculty to explore nature, stay fit and enjoy their rides. The brand-new cycles with helmets and all protective gear are available for interested people.	Vikrant Chauhan	82194 28176



## CORE LIFE SKILLS

by

**World Health  
Organisation**





## OUR COLLABORATORS



### 7.1.2 Benefits of Joining

- **Skill Development:** Enhance both hard and soft skills.
- **Networking:** Build connections with peers, faculty, alumni, and industry professionals.
- **Leadership Opportunities:** Take on roles that allow for personal growth and the development of leadership qualities.
- **Cultural Exposure:** Embrace the diverse backgrounds and experiences of fellow students.
- **Community Building:** Forge lasting friendships and contribute to the university's vibrant community.

### 7.1.3 How to Start a New Club or Organization

- **Proposal Submission:** Submit a detailed proposal outlining the club's purpose, objectives, and planned activities.
- **Faculty Advisor:** Identify a faculty member who agrees to serve as an advisor to the organization.
- **Member Recruitment:** Demonstrate student interest with a list of potential members.
- **Approval:** Once the proposal is reviewed and approved by the Student Affairs Committee, your organization can officially begin operations.

### 7.1.4 Guidelines and Responsibilities

- **Conduct:** All organizations and clubs must adhere to the university's Code of Conduct.
- **Annual Reports:** Submit yearly activity and financial reports to maintain active status.
- **Meetings:** Hold regular meetings, ensuring transparency and effective communication among members.
- **University Representation:** Act as positive ambassadors for Shoolini University in all external engagements.

### 7.1.5 Resources and Support

**The university offers various resources to support student organizations:**

- **Event Spaces:** Book spaces for meetings, workshops, and events.
- **Funding:** Apply for grants and funding for special projects and events.
- **Promotion:** Use university channels, like the website and social media, to promote activities and recruit new members.
- **Training:** Access workshops on leadership, event planning, and other relevant skills.

### 7.1.6 Student Council

The Student Council is a pivotal component of Shoolini University's governance structure, fostering a sense of ownership and active participation among the student body. This Council serves as a bridge connecting the faculty, management, and the students, facilitating transparent and constructive communication. Through the Council, students gain valuable experience in planning, organizing, and leadership. Members of this esteemed Council are handpicked based on their academic achievements, active involvement in university events, and notable leadership skills. Selection is a meticulous process, with the Dean and faculty members collaboratively deciding on the final candidates. Once chosen, these students form the core of the Student Council, taking the initiative to elect their office bearers.

**The following positions are elected within the Council:**

- President
- Vice President
- General Secretary
- Treasurer
- Members

**Key Roles and Responsibilities of the Student Council:**

**Representing Student Voices:** The Council not only articulates student concerns but also upholds and champions the university's mission and vision. Active in the planning of the campus activity calendar, they ensure student grievances are voiced and any significant incidents on campus are promptly addressed. More than just intermediaries, they act as partners and leaders, collaborating closely with the faculty to disseminate essential information among the students efficiently.

**Orchestrating the Induction Program:** The Council plays a vital role in organizing the Week of Welcome (WOW), a weeklong induction for incoming students. They ensure every newcomer is paired with a senior "BUDDY" who serves as a mentor, guiding them not only during the induction but throughout their university journey. From coordinating guest speakers to managing logistics and entertainment, the Council oversees all aspects of this program.

**Coordination of Placements:** A significant responsibility lies in nominating placement coordinators for each program, chosen by the respective student groups. These coordinators, working in tandem with the Placement and Career Development Cell, handle the logistics of campus recruitment. Tasks, including producing placement brochures, gathering resumes, disseminating information on corporate campus visits, and ensuring adherence to the university's Placement Policy, fall under the Council's purview.

**Event Organization and Campus Community Initiatives:** Shoolini University boasts a lively campus ambiance, teeming with activities that extend beyond academic pursuits. The Council collaborates with the Dean of Student Welfare to curate events such as Moksh (Youth Festival), Manchtantra (inter-departmental cultural competition), Perna Diwas, Teacher's Day, Independence Day, and many more. Their hands-on approach ensures that Shoolini events maintain high-quality standards.

**Overseeing Hostel Committees:** To ensure the efficient functioning of hostels, several student committees have been instituted. These include the mess committee, discipline committee, housekeeping committee, and the sports and cultural committee.

With a firm belief in "Giving Back to Society," Shoolini instils the spirit of community service in its students. The Council actively partners with various NGOs and local organizations, spearheading projects that make a difference in society.

### 7.1.7 Contact Information

For questions or further information, please reach out to the Office of Student Affairs:

Email: [dsw@shooliniuniversity.com](mailto:dsw@shooliniuniversity.com)

Phone: +91-8219443632

Location: A Block, Administration Building

Shoolini University is proud to offer a diverse range of student organizations and clubs, catering to a myriad of interests and passions. We encourage all students to explore these opportunities and find a community that resonates with their aspirations and interests.

## 7.2 Recreational Facilities and Sports

Shoolini University boasts state-of-the-art sports amenities, underscoring its commitment to promoting physical fitness and sportsmanship among its students. Two standout facilities on campus are the Milkha Singh Sports Complex and the Yuvraj Singh Stadium.

The Milkha Singh Sports Complex is a modern hub for indoor sporting activities. Equipped with top-tier amenities, this complex facilitates a range of indoor sports, ensuring students can train and compete in a world-class environment.

For cricket aficionados, the Yuvraj Singh Stadium stands as a testament to the university's dedication to the sport. This premier facility caters to both budding cricketers and seasoned players, providing a top-notch ground to practice and play.

Significantly, both these sports landmarks were inaugurated by the legends they're named after the "Flying Sikh" Milkha Singh and cricketing maestro Yuvraj Singh, adding an extra layer of prestige to the facilities. Their involvement accentuates the university's endeavour to inspire students to excel not just academically but also in extracurricular pursuits.

Shoolini University's indoor gymnasium stands as a testament to its commitment to holistic student well-being. A haven for fitness enthusiasts, the gym provides a range of modern equipment suitable for both beginners and seasoned gym-goers. It's a popular spot among hostel residents who appreciate the convenience of having top-notch fitness facilities right at their doorstep. Additionally, students commuting from town find it equally advantageous, allowing them to seamlessly incorporate fitness into their daily routines. The gymnasium not only fosters physical health but also creates a community of health-conscious individuals, united by their shared passion for well-being.

Shoolini University boasts one of the most picturesque basketball courts in India, set against a backdrop of breath-taking landscapes. This court is more than just a sports facility; it's a fusion of natural beauty and athletic passion. Serving as a hub of energetic workouts and spirited matches, it draws both male and female players who are keen on perfecting their skills or simply enjoying a game with friends. The court not only facilitates rigorous training for budding basketball talents but also fosters a sense of camaraderie and teamwork among students. Whether you're looking for serious competition or a fun-filled exercise session, this basketball court promises a captivating experience.

Nestled within the multi-storey Milkha Singh Indoor Sports Complex, our snooker facilities stand out as a popular recreational spot for students and staff. Alongside other indoor games like badminton and table tennis, the snooker tables offer a blend of strategy, skill, and camaraderie. Whether you're an experienced player aiming for the perfect break or a novice just getting the hang of the game, our snooker facilities cater to all levels of expertise. The environment in the complex encourages friendly competitions, refining skills, or simply enjoying a leisurely game after a day of academic rigor. The snooker area, like the other facilities within the complex, reflects Shoolini University's commitment to offering diverse recreational opportunities for its community.

For those with an adventurous spirit, Shoolini University's trekking and adventure clubs are your gateway to exhilaration and exploration. Dive into the heart of adventure by joining our enthusiastic groups that venture into the breath-taking terrains and scenic landscapes surrounding the campus. Whether you're keen on challenging treks, curious outdoor experiments, or immersive travels around the state, these clubs offer opportunities to satiate your wanderlust. Beyond just physical activity, these adventures foster teamwork, resilience, and a deeper appreciation for nature. Dive into uncharted territories, form lifelong friendships, and create memories that will last a lifetime with the university's adventure initiatives.

### Sports games and team:

Badminton. Girls/ boys	T.T. Girls/ boys
Chess. Girls/ boys	Carrom. Girls/ boys
Basketball. Girls/ boys	Volleyball. Girls/ boys
Cricket. Girls/ boys	Football. Boys
Kabaddi. Boys	Wrestling. Boys

### Extra-curricular activity sessions:

Music Vocals
Martial Arts (Girls/ Boys)
Guitar Classes
Drum Classes
Aerobics Sessions (Girls/ Boys)
Cycling Club
Skating Sessions (Girls/ Boys)
Korfball (Girls/ Boys)

### Gym facilities:

Strength section with multi station machines 2022 series.  
cardio section with hi-tech treadmill and cycles/cross trainers.

*We have trained coaches for every game.  
Sports session everyday 5:30 pm to 8:30 pm at relative sports venues.*















## 8 Financial Information

### FEE STRUCTURE FOR ACADEMIC YEAR 2023 - 24\*

COURSE	Course Name on Application Form	SEM FEE 2023-24 HP	SEM FEE 2022-23 HP NON-HP
UG	B Com (Hons)	55,000	65,000
UG	B Design	94,875	1,05,000
UG	B Pharmacy	64,700	64,700
UG	B Pharmacy (LEET)	64,700	64,700
UG	B Tech Bioinformatics	92,500	93,700
UG	B Tech Bioinformatics (LEET)	92,500	93,700
UG	B Tech Biotechnology (LEET)	93,700	1,00,000
UG	B Tech Biotechnology Research	1,10,000	1,15,000
UG	B Tech Civil Engineering (AI & Geoinformatics)	80,000	85,000
UG	B Tech Civil Engineering (LEET)	80,000	85,000
UG	B Tech ECE (Leet)	80,000	85,000

UG	B Tech CSE Artificial Intelligence B Tech CSE Blockchain & IoT B Tech CSE Cloud Computing B Tech CSE Cyber Security B Tech CSE DevOps B Tech CSE Data Science B Tech CSE Game Design & AR/VR B Tech CSE UI/UX B Tech CSE Graphics and Animation	1,13,595	1,17,500
UG	B Tech Artificial Intelligence	1,15,000	1,20,000
UG	B Tech Artificial Intelligence (LEET)	1,15,000	1,20,000
UG	B Tech CSE Artificial Intelligence B Tech CSE Cloud Computing B Tech CSE Cyber Security B Tech CSE Data Science <b>(LEET)</b>	1,13,595	1,17,500
UG	B Tech Mechanical (Robotics & AI)	72,500	80,000
UG	B Tech Food Technology LEET	93,700	1,10,000
UG	B Tech Food Technology Research	1,10,000	1,15,000
UG	B Tech Renewable Energy	72,500	80,000
UG	BA (Hons) Economics and Data Science	54,450	60,000
UG	BA (Hons) English	33,525	42,500
UG	BA (Hons) Hindi	33,525	42,500
UG	BA (Hons) History	54,450	60,000
UG	BA (Hons) Political Science	54,450	60,000
UG	BA Journalism and Mass Communication	36,875	43,500

UG	BA LLB	57,500	65,000
UG	BA (Hons) Psychology and Counseling BSc (Hons) Psychology and Counseling	54,450	60,000
UG	BA (Hons) Behavioural & Neuro Psychology BSc (Hons) Behavioural & Neuro Psychology	75,000	80,000
UG	BSc (Hons) Clinical Psychology BA (Hons) Clinical Psychology	75,000	80,000
UG	BSc (Hons) Yoga BA (Hons) Yoga	36,875	42,500
UG	BA (Hons) Mathematics BSc (Hons) Mathematics	46,930	50,000
UG	BBA (3 Years)	46,930	55,000
UG	BBA Rural Management	46,930	57,500
UG	BBA Aviation and Management BBA Computer Science and Entrepreneurship	54,450	65,000
UG	BBA Data Analytics BBA Banking & Insurance BBA Digital Marketing BBA Financial Markets BBA Information Technology BBA Logistics & Supply Chain Management	75,000	80,000
UG	BCA Artificial Intelligence & Machine Learning BCA Gaming & Graphics BCA Full Stack Developer BCA UI/UX	54,450	65,000
UG	BSc (Hons) Agriculture	60,655	67,500
UG	BSc (Hons) Biotechnology	64,350	75,000

UG	BSc (Hons) Botany	46,930	55,000
UG	BSc (Hons) Chemistry	46,930	55,000
UG	BSc (Hons) Food Technology	64,350	75,000
UG	BSc (Hons) Microbiology	75,000	80,000
UG	BSc (Hons) Nutrition and Dietetics	55,000	60,000
UG	BA (Hons) Nutrition and Dietetics	55,000	60,000
UG	BSc (Hons) Physics	46,930	55,000
UG	BSc (Hons) (4 Years)	46,930	55,000
UG	BSc (Hons) Zoology	46,930	55,000
UG	BSc Hospitality and Hotel Administration	65,000	70,000
xUG	BSc Travel & Tourism Management	46,930	55,000
UG	LLB	57,495	60,000
PG	LLM	47,440	55,000
PG	M Pharmacy Pharmaceutics M Pharmacy Pharmaceutical Chemistry M Pharmacy Pharmacology	77,000	77,000
PG	M Tech Biotechnology	82,115	87,500
PG	M Tech Civil Engineering	82,115	82,115
PG	M Tech CSE	82,115	82,115

PG	M Tech Food Technology	82,115	87,500
PG	MA English Literature	43,580	50,000
PG	MA History	43,580	50,000
PG	MA Journalism & Mass Communication	47,440	50,000
PG	MA Political Science	54,450	55,000
PG	MA Clinical Psychology MSc Clinical Psychology	74,250	75,000
PG	MA Psychology MSc Psychology	74,250	75,000
PG	MA Mathematics MSc Mathematics	46,930	50,000
PG	MBA (Biotechnology) MBA (Business Analytics) MBA (Digital Marketing) MBA (Finance) MBA (Human Resources) MBA (Logistics and Supply Chain Management) MBA (Pharma & Healthcare) MBA (Financial Markets) MBA (Communications) MBA (Agri Business) MBA (Marketing)	1,35,000	1,48,750
PG	MCA (Artificial Intelligence) MCA (Cloud Computing) MCA (Devops)	71,500	75,000

PG	MSc Agriculture Agricultural Economics MSc Agriculture Agricultural Extension & Communication MSc Agriculture Agronomy MSc Agriculture Entomology MSc Agriculture Genetics & Plant Breeding MSc Agriculture Plant Pathology MSc Soil Science & Agriculture Chemistry	65,000	70,000
PG	MSc Biotechnology	74,250	80,000
PG	MSc Botany	60,000	75,000
PG	MSc Chemistry	60,000	75,000
PG	MSc Data Science	60,000	65,000
PG	MSc Food Technology	74,250	80,000
PG	MSc Microbiology	60,000	75,000
PG	Msc Nutrition and Dietetics	69,575	70,000
PG	MSc Physics	60,000	75,000
PG	MA Yoga MSc Yoga	46,930	46,930
PG	MSc Zoology	60,000	75,000
PG	MSc Nanotechnology	60,000	65,000
PhD	PhD ADR	65,000	70,000
PhD	PhD AI	65,000	70,000
PhD	PhD Applied Economics	65,000	70,000



PhD	PhD Big Data	65,000	70,000
PhD	PhD Biotechnology	86,970	87,500
PhD	PhD Botany	87,160	87,500
PhD	PhD Cancer Biology	86,625	87,500
PhD	PhD Chemistry	87,160	87,500
PhD	PhD Civil	75,000	80,000
PhD	PhD Cloud Computing Tech	65,000	70,000
PhD	PhD CSE	75,000	80,000
PhD	PhD Cyber Law	65,000	70,000
PhD	PhD Cyber Security	65,000	70,000
PhD	PhD Data Analytics	65,000	70,000
PhD	PhD Data Sciences	65,000	70,000
PhD	PhD Disaster Management	69,575	75,000
PhD	PhD ECE	65,000	70,000
PhD	PhD Economics	69,575	75,000
PhD	PhD Energy	75,000	75,000
PhD	PhD English	69,575	75,000
PhD	PhD Env Science	87,160	87,500

PhD	PhD Finance	65,000	70,000
PhD	PhD Food Technology	87,500	87,500
PhD	PhD Genetic Engineering	65,000	70,000
PhD	PhD Genetics	65,000	70,000
PhD	PhD History	65,000	70,000
PhD	PhD Human Resource	67,045	75,000
PhD	PhD Human Rights	65,000	70,000
PhD	PhD IPR	70,000	75,000
PhD	PhD Journalism	75,000	80,000
PhD	PhD Legal Sciences	75,000	80,000
PhD	PhD Management	75,000	80,000
PhD	PhD Mass Communication	75,000	80,000
PhD	PhD Mathematics	67,045	75,000
PhD	PhD Mechanical	75,000	80,000
PhD	PhD Microbiology	87,160	87,500
PhD	PhD Pharma	84,000	84,000
PhD	PhD Physics	87,160	87,500
PhD	PhD Political Science	74,250	75,000

PhD	PhD Project Management	75,000	80,000
PhD	PhD Psychology	74,250	75,000
PhD	PhD Public relations	65,000	70,000
PhD	PhD Sanskrit	65,000	70,000
PhD	PhD Sociology	65,000	70,000
PhD	PhD Supply Management	65,000	70,000
PhD	PhD Water Management	69,575	75,000
PhD	PhD Yoga	69,575	75,000
PhD	PhD Zoology	87,160	87,500

\*Fee and courses are subject to approval by Govt of Himachal Pradesh

\*\*Admission is confirmed by paying a registration amount of Rs 20,000 (fully adjustable in first-semester fee)

\*\*One-time refundable academic security of Rs 10,000 is collected at the time of final semester fee payment

### **Process for award of financial aid/scholarships at Shoolini University**

Every year, Shoolini University offers close to five hundred scholarships to deserving students. The nature of scholarships can be either merit scholarships, need scholarships or merit-cum-need scholarships. The value of the scholarship ranges from 10%-100% of the tuition fee waiver, on a case-to-case basis.

Please note that no scholarships are granted towards hostel fee.

Process for award and monitoring of scholarships is quite simple:

We advertise all scholarships on offer on our website and in our application form.

All terms and conditions related to award and continuation of these scholarships are transparently displayed on the website. Students are requested to read these terms and conditions carefully.

At the time of filling the online application form, students can choose the desired scholarship.

Eligible students will be informed through their admissions counsellors within 7 days of applying for a scholarship.

In case of need scholarships and need-cum-merit scholarships, eligible students must undergo a short telephonic/ personal interview with the head of the University Scholarship Committee.

Once the documents are verified, student will receive a formal e-mail confirming the award of the scholarship.

We would like you to appreciate that the number of applicants for a certain scholarship are always more than the number of scholarships available. Only the most deserving students will receive the scholarship. Therefore, sometimes, even after meeting the eligibility conditions, the Scholarship Committee may be constrained to reject a request for scholarship and offer the same to more deserving students.

To secure your admission to Shoolini University, we recommend that you start the application process early. This will give you sufficient time to explore and select the program and specialisation that best aligns with your career goals and interests.

## 9 Safety and Security

### 9.1 Campus Safety Policies

Shoolini University's serene setting amidst the enchanting landscape of Himachal Pradesh, India, offers a conducive learning environment. To maintain this tranquil atmosphere and ensure the well-being of everyone on campus, the university has instituted a comprehensive set of campus safety policies.

#### 9.1.1 Security Infrastructure

- **CCTV Surveillance:** The campus boasts an extensive CCTV network, with cameras strategically placed to monitor key areas, ensuring round-the-clock surveillance.
- **Security Personnel:** A dedicated team of well-trained security staff works 24/7, ensuring a secure environment for students, faculty, and visitors.

#### 9.1.2 Emergency Response Team (ERT)

- **Training & Drills:** Regular training sessions and drills keep the ERT primed to handle emergencies effectively.
- **Communication Systems:** ERT members are equipped with advanced communication devices for efficient coordination during crises.

#### 9.1.3 Access Control

- **Entry Protocol:** Strict access control is in place, with only authorized personnel and students with valid identification cards permitted entry to the university's premises.

#### 9.1.4 Anti-Discrimination and Harassment Policies

- **Zero Tolerance:** The university has a strict policy against any form of harassment, bullying, or discrimination.
- **Awareness & Counselling:** Through workshops, campaigns, and counselling services, the university fosters a culture of respect and understanding.

#### 9.1.5 Awareness Campaigns

- **Substance and Alcohol Awareness:** Programs educate students about the dangers of substance and alcohol abuse, promoting a healthy lifestyle.
- **Cyber Safety:** Initiatives are in place to enlighten students about online safety, ensuring they're aware of potential cyber threats.
- **Road Safety:** Campaigns that focus on the importance of following traffic rules and the hazards of reckless driving aim to ensure students' safety off-campus.

Shoolini University's unwavering commitment to safety is evident in its robust security systems, emergency protocols, and proactive awareness initiatives. The university's primary goal is to provide a nurturing environment where students, faculty, and staff can focus on their academic and personal growth, knowing they are in safe hands.

## 9.2 Emergency Procedures

At the heart of Shoolini University's ethos is the safety and welfare of its community. Recognizing the unpredictability of emergencies, the institution has methodically crafted emergency procedures, aiming to provide a swift response, minimize risks, and maintain order.

### 9.2.1 The Pillar of Safety: Emergency Response Team (ERT)

- **Composition:** The ERT comprises skilled professionals ready to address a multitude of emergency scenarios.
- **Preparedness:** Periodic training sessions and drills keep the team alert and updated, ensuring they are always primed to respond.

### 9.2.2 Always Accessible: The 24/7 Emergency Hotline

- **Role:** This dedicated hotline is the immediate point of contact for any emergency.
- **Management:** Skilled operators manage the hotline, prioritizing each call based on its urgency.

### 9.2.3 Medical Response and Care

- **On-site Health Center:** This center is equipped with medical supplies and professionals to handle initial treatments.
- **Triage:** Immediate treatment ensures stabilization before potentially moving patients to more extensive medical facilities.

### 9.2.4 Fire Safety: Preparedness and Response

- **Infrastructure:** Comprehensive fire alarm systems and firefighting equipment pepper the campus.
- **Collaboration:** The synergy between the ERT and the local fire department promises a coordinated response, while regular drills bolster community awareness and readiness.

### 9.2.5 Natural Disaster Protocols

- **Evacuation Plans:** Recognizing the unpredictable nature of disasters, clearly marked evacuation routes and safe assembly areas have been established.
- **Guidance:** The ERT takes the lead during evacuations, offering essential instructions and ensuring orderly movement.

### 9.2.6 Cybersecurity: Safeguarding the Digital Realm

- **Proactive Monitoring:** The university invests in regular audits to ensure the integrity of its digital assets.
- **Incident Response:** At the first sign of a cyber threat, the IT team and ERT collaboratively work to neutralize the threat and secure data.

### 9.2.7 Communication: Keeping the Community Informed

- **Channels:** From traditional methods like text messages and emails to modern platforms like social media, the university ensures real-time communication.
- **Purpose:** These channels relay essential updates, instructions, and status reports during emergencies.

Shoolini University's meticulous emergency procedures reflect its profound dedication to the well-being of its community. By arming itself with a ready ERT, clear emergency protocols, and ensuring open channels of communication, the university stands as a citadel of safety, poised to protect and serve its community at every turn.

## 9.3 Reporting Incidents

Safety and security on campus are hinged on vigilance and timely intervention. Recognizing this, Shoolini University has instituted a robust incident reporting mechanism, empowering its community to act as the first line of defence against potential risks.

### 9.3.1 A Culture of Open Communication

- **Scope of Reporting:** Incidents can range from safety hazards, medical emergencies, property damages to instances of harassment and discrimination.
- **Proactivity Encouraged:** The university underscores the importance of reporting witnessed or experienced incidents promptly.
- 

### 9.3.2 Accessible Reporting Channels

- **Emergency Hotline:** As the primary line of reporting, this 24/7 hotline ensures immediate attention to emergencies. Trained personnel manage the hotline, ensuring confidentiality and swift response.
- **Online Incident Reporting Platform:** For non-urgent reports, this secure online portal allows members to detail incidents, facilitating a structured response from the administration.

### 9.3.3 The Power of Timely Reporting

- **Swift Action:** Early reporting ensures that the university can take immediate remedial measures.
- **Prevention:** Reporting in a timely manner can mitigate further escalation, ensuring overall campus safety.

### 9.3.4 Shielding the Reporter

- **Whistleblower Protection:** The university has put in place safeguards to protect individuals reporting incidents from any form of backlash or retaliation.
- **Confidentiality Assured:** Reporters can be assured that their identity and the information shared remain confidential, fostering a trusting environment.

### 9.3.5 Building Awareness and Responsibility

- **Educational Campaigns:** Through workshops and campaigns, the university educates its community about the nuances and importance of incident reporting.
- **Collective Responsibility:** These educational initiatives also underline the fact that safety is a shared responsibility, emphasizing the crucial role each individual plays in the ecosystem of campus security.

By weaving a culture of proactive reporting into its fabric, Shoolini University stands as a beacon of safety and security. Through its multifaceted reporting mechanism and the emphasis on confidentiality and protection, it encourages its community to remain vigilant, fostering a campus environment where the well-being of every member is a collective priority



## 10 Policies and Regulations

### 10.1 Privacy & Confidentiality at Shoolini University: Safeguarding Personal Information

At the heart of ethical standards and trust is the respect for individual privacy. Shoolini University stands as a sentinel in this respect, taking comprehensive measures to ensure the confidentiality of sensitive information.

#### 10.1.1 A Commitment to Ethical Standards

- **Alignment with Regulations:** The university's practices are in line with global data protection norms, ensuring that personal data is managed ethically and legally.
- **Transparency through Policy:** Their Privacy Policy clarifies the nature of data collection, the rationale behind it, and its utilization, ensuring stakeholders are informed.

#### 10.1.2 Rigorous Data Management and Security

- **Legitimate Use:** Information is gathered solely for pertinent academic, administrative, and research endeavors.
- **Robust Data Protection:** Advanced encryption and access control mechanisms ensure data remains shielded from unwarranted access.

#### 10.1.3 Student-Centric Privacy Measures

- **Guarding Academic Confidentiality:** All student-related data, be it academic or disciplinary, is guarded with rigor, ensuring students' privacy remains uncompromised.
- **Consent-Based Sharing:** Except in legal scenarios, no third-party access is granted without explicit student consent.

#### 10.1.4 Upholding Research Ethics

- **Research Integrity:** For all research endeavors, the university mandates adherence to ethical guidelines, preserving the privacy of participants.
- **Confidential Data Storage:** Research-related information, especially participant data, is securely stored, ensuring it is used solely for research objectives.

#### 10.1.5 Cybersecurity & IT Infrastructure

- **Fortified IT Systems:** Regular IT audits ensure the university's digital infrastructure remains resilient against potential data breaches.
- **Secure Data Repositories:** Data backups and secure servers ensure continuity and protection against data losses.

#### 10.1.6 Responsible External Collaboration

- **Partnership with Integrity:** Whenever collaborating externally, the university ensures it remains compliant with data protection norms and prioritizes stakeholder consent.

#### 10.1.7 Education & Awareness Initiatives

- **Privacy Advocacy:** The university propels initiatives that educate its community about the significance of data protection, fostering a culture of responsible data management.

Through its meticulous measures and commitment, Shoolini University emerges as a fortress of privacy and confidentiality. From its robust IT infrastructure to its adherence to global data protection standards, it ensures that the trust of its stakeholders is always upheld. This commitment not only safeguards personal data but also fortifies the university's reputation as an institution that respects and values the privacy of its community.

### 10.2 Shoolini University's Stance on Non-Discrimination: Celebrating Diversity & Promoting Inclusion

Central to Shoolini University's ethos is a profound commitment to inclusivity and diversity. The university ardently believes in recognizing the worth of every individual and is dedicated to ensuring an unbiased and equal environment.

#### 10.2.1 Broad Scope of Non-Discrimination Policies

- **Universal Application:** The non-discrimination policies extend across all facets of university operations, from admissions and employment to extracurricular activities and facility access.
- **Protective Cover:** They safeguard against biases based on race, ethnicity, nationality, gender, sexual orientation, religion, disability, or any other defining attributes.

#### 10.2.2 Zero Tolerance for Discriminatory Behaviour

- **Preventive Action:** Discrimination, harassment, and any retaliatory acts are forbidden.

- **Prompt Addressal:** Reported incidents undergo swift investigations, and those found culpable face appropriate disciplinary actions.

### 10.2.3 Education & Training Initiatives

- **Diversity Workshops:** Regular training sessions educate the university community about the importance of embracing diversity and the perils of harbouring biases.
- **Awareness Campaigns:** Initiatives aim to replace stereotypes with respect, understanding, and appreciation for differences.

### 10.2.4 Efficient Reporting & Grievance Redressal

- **Transparent Reporting Mechanism:** Clear, confidential avenues exist for reporting discrimination or harassment, ensuring a supportive environment for whistleblowers.
- **Equal Opportunity Cell:** Dedicated to overseeing non-discrimination policies, this cell aids, guidance, and resolution for related issues.

### 10.2.5 Curriculum Embracing Diversity

- **Global Perspectives:** The curriculum promotes diverse viewpoints, urging students to appreciate various cultures, thereby cultivating empathy, and understanding.
- **Empowering Future Leaders:** This holistic approach preps students for a globalized, interconnected world, fostering global citizens who champion inclusivity.

### 10.2.6 University Leadership's Role

- **Custodians of Inclusivity:** The leadership and faculty act as the pillars upholding non-discrimination values, continually advocating for a diverse and inclusive campus culture.

In a world striving for inclusivity, Shoolini University stands out as an exemplar. Its comprehensive non-discrimination policies, combined with its proactive measures, echo its devotion to ensuring every individual's right to respect and dignity. The university not only champions the cause of non-discrimination but leads by example, shaping a community that celebrates diversity in all its glory.

## 10.3 Shoolini University - Comprehensive Institutional Policies and Regulations Guide

Shoolini University prides itself on fostering an environment that promotes academic excellence, mutual respect, and holistic development. The following is a detailed overview of various institutional policies and regulations:

### 10.3.1 Academic Integrity Policy

**Objective:** To nurture a culture of intellectual honesty and ensure the authenticity of academic achievements.

**Provisions:**

Every student must adhere to ethical standards in all academic activities.

Plagiarism, cheating, or any form of dishonesty will not be tolerated.

Violations lead to disciplinary actions, ranging from grade penalties to expulsion, depending on the severity.

**10.3.2 Attendance Policy**

**Objective:** To emphasize the significance of consistent classroom presence for effective learning.

**Provisions:**

Students must maintain a minimum attendance threshold to be deemed eligible for evaluations.

Excused absences are considered for medical and significant personal reasons, but students should apply with supporting documentation.

**10.3.3 Grievance Redressal Policy**

**Objective:** To provide a platform where concerns of students, faculty, and staff are addressed fairly and efficiently.

**Provisions:**

A dedicated Grievance Redressal Cell ensures impartial handling of all complaints.

Confidentiality is maintained, and prompt solutions are sought.

**10.3.4 Anti-Ragging Policy**

**Objective:** To ensure a safe and welcoming environment for every student.

**Provisions:**

Absolute zero tolerance for ragging or harassment in any form.

Awareness programs educate newcomers about their rights.

Stringent penalties, including expulsion, for those engaging in ragging.

**10.3.5 Research and Ethical Guidelines**

**Objective:** To maintain ethical integrity in academic and experimental research.

**Provisions:**

Mandatory review and approval for research involving humans, animals, or sensitive data.  
Ensures adherence to international ethical standards.

### **10.3.6 Financial Aid and Scholarship Policies**

**Objective:** To support meritorious students facing financial limitations.

**Provisions:**

Various scholarships based on academic performance, sports, and extracurricular achievements.

Financial aids available for economically disadvantaged students.

### **10.3.7 IT and Cybersecurity Policies**

**Objective:** To secure the digital ecosystem of the university and its stakeholders.

**Provisions:**

Strict protocols for data access and storage.

Regular training sessions for students and staff on cybersecurity best practices.

### **10.3.8 Library Policies**

**Objective:** To optimize the use of library resources for academic enrichment.

**Provisions:**

Clear guidelines on borrowing, renewing, and returning resources.

Digital resources can be accessed through university portals, adhering to copyrights and licenses.

### **10.3.9 Environmental Sustainability Policy**

**Objective:** To champion eco-friendly practices and instil environmental consciousness.

**Provisions:**

Emphasis on recycling, waste management, and energy conservation.

Regular awareness campaigns promoting green initiatives on and off-campus.

In conclusion, Shoolini University's institutional policies and regulations ensure a harmonious, productive, and respectful atmosphere for everyone. Adherence to these policies reinforces the values the university stands for, making it a premier institution of learning and growth.

## 11 International Students Section

### APPLICATION PROCEDURE

Students must be officially nominated by the international office/coordinator at the home institution, via email, before they apply. Nominations has to be sent, by email to [oia@shooliniuniversity.com](mailto:oia@shooliniuniversity.com) at the same time as applications.

Application documents must be complete, filled-out, and signed by students and submit it to international office of home institution for the application to be processed.

### APPLICATION DOCUMENTS

- 1) Application Form:
- 2) Official Academic Transcript
- 3) Study Plan: 1 to 2 Pages in English
- 4) Professor's Letter of Recommendation (English)
- 5) Copy of Passport (Front page that includes personal information)
- 6) Passport size photo and scan of ID card
- 7) Curriculum vitae

### Dormitory Information

All accepted exchange students will receive a welcome email with practical, pre-arrival information about visa application, travelling, arrival, accommodation, enrolment, university, and town.

Official currency of India is Rupee (INR), (1 \$ = 73 Rupees approx.).

### Living costs (Per Semester):

Accommodation: INR 40,000
Food: Indian INR 30,000
Pickup and drop from Airport: INR 6,000
Local Transportation: INR 4,000
Local Site Seeing: INR 5,000
Internet Charges: INR 5,000
Laundry: INR 5,000
Kitchen Facilities: INR 5,000

### Note:

Shoolini university will charge only INR 50,000 for all above expenses  
Shoolini University will not charge any tuition fee to partner university students.

## Payment of Fee-

Direct Bank Transfer

Swift. -ICICINBBNRI

Branch code -0504

Branch Name - Solan

A/C - No - 050401001387

A/C name - Shoolini University of Biotechnology and Management Sciences

## Course Registration



Visit our Link of Online Portal for the Registration

<https://my.shooliniuniversity.com/>

Or

Download the Mobile application

<https://play.google.com/store/apps/details?id=com.myShoolini.sunny.shoolini&hl=en&pcampaignid=MKT-Other-global-all-co-prtnr-py-PartBadge-Mar2515-1> (Android)

<https://apps.apple.com/us/app/myshoolini/id1308128621?ls=1> (IOS)

Fill your Login Credentials Provided by International Office



Fill the Contact Details for One-time Password



Choose the Course



Agree Terms and Conditions



Wait for 48 Hrs.

Follow the Following Steps for the Course Registration Process

## Registration Card (eFRRO)

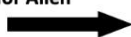


Visit the link- <https://indianfro.gov.in/eservices/home.jsp>



Register yourself and Login to your account

Follow the Following Steps for Alien  
Registration Card



Visit the OIA within 4 Days after arrival to University



Apply for eFRRO initial registration



Complete the documentation process



Complete the Online Application Form



Wait for the notification from FRO Delhi



Visit to Nearest FRO office



Submit Hardcopy of RC to OIA

## 12 Contact Information

Sr. No.	Name	Designation	Email Address
1	Prof. PK Khosla	Chancellor	<a href="mailto:chancellor@shooliniuniversity.com">chancellor@shooliniuniversity.com</a>
2	Mr. Vishal Anand	Pro Chancellor	<a href="mailto:vishalanand@shooliniuniversity.com">vishalanand@shooliniuniversity.com</a>
3	Prof. Atul Khosla	Vice Chancellor	<a href="mailto:vc@shooliniuniversity.com">vc@shooliniuniversity.com</a>
4	Prof. Sunil Puri	Registrar	<a href="mailto:registrar@shooliniuniversity.com">registrar@shooliniuniversity.com</a>
5	Prof. Narinder Verma	Dean Academics	<a href="mailto:deanacademics@shooliniuniversity.com">deanacademics@shooliniuniversity.com</a>
6	Ms. Meenakshi Sharma	EA to VC	<a href="mailto:deanacademics@shooliniuniversity.com">deanacademics@shooliniuniversity.com</a>
7	Prof. YS Negi	Dean of Agriculture	<a href="mailto:deanagriculture@shooliniuniversity.com">deanagriculture@shooliniuniversity.com</a>
8	Prof. Saurabh Kulshreshtha	Dean of Applied Sciences and Biotechnology	<a href="mailto:sourabhkulshreshtha@shooliniuniversity.com">sourabhkulshreshtha@shooliniuniversity.com</a>
9	Prof. Munish Sahrawat	Dean of Management Sciences	<a href="mailto:munishsahrawat@shooliniuniversity.com">munishsahrawat@shooliniuniversity.com</a>
10	Dr. Nandan Sharma	Dean (Associate) of Legal Sciences	<a href="mailto:nandansharma@shooliniuniversity.com">nandansharma@shooliniuniversity.com</a>
11	Prof. Sunil Puri	Dean of Sciences	<a href="mailto:sunilpuri@shooliniuniversity.com">sunilpuri@shooliniuniversity.com</a>
12	Prof. Virender Rihani	Dean of Engineering and Technology	<a href="mailto:deanengg@shooliniuniversity.com">deanengg@shooliniuniversity.com</a>
13	Prof. Deepak Kapoor	Dean of Pharmaceutical Sciences	<a href="mailto:deepaknandkishore.558@shooliniuniversity.com">deepaknandkishore.558@shooliniuniversity.com</a>
14	Ms. Poonam Nanda	Dean Student's Welfare	<a href="mailto:dsw@shooliniuniversity.com">dsw@shooliniuniversity.com</a>
15	Prof. Kesari	Dean Undergraduate Studies	<a href="mailto:kesari@shooliniuniversity.com">kesari@shooliniuniversity.com</a>
16	Ms. Avnee Khosla	Director Placements	<a href="mailto:avneekhosla@shooliniuniversity.com">avneekhosla@shooliniuniversity.com</a>
17	Prof. JM Julka	Director Planning	<a href="mailto:jmjulka@shooliniuniversity.com">jmjulka@shooliniuniversity.com</a>
18	Brig. SD Mehta	Director Operations	<a href="mailto:dirops@shooliniuniversity.com">dirops@shooliniuniversity.com</a>
19	Mr. MD Sharma	Comptroller Finance	<a href="mailto:mohandutt@shooliniuniversity.com">mohandutt@shooliniuniversity.com</a>



20	Mr. Lajja Ram	Transport Officer	<a href="mailto:lajjaram@shooliniuniversity.com">lajjaram@shooliniuniversity.com</a>
21	Dr. Ashoo Khosla	Medical Officer	<a href="mailto:ashookhosla@shooliniuniversity.com">ashookhosla@shooliniuniversity.com</a>

### **Bajhol Campus (Reception)**

Contact: 01792-350000

Website: <https://shooliniuniversity.com/>

Email: [vc@shooliniuniversity.com](mailto:vc@shooliniuniversity.com)  
[registrar@shooliniuniversity.com](mailto:registrar@shooliniuniversity.com)